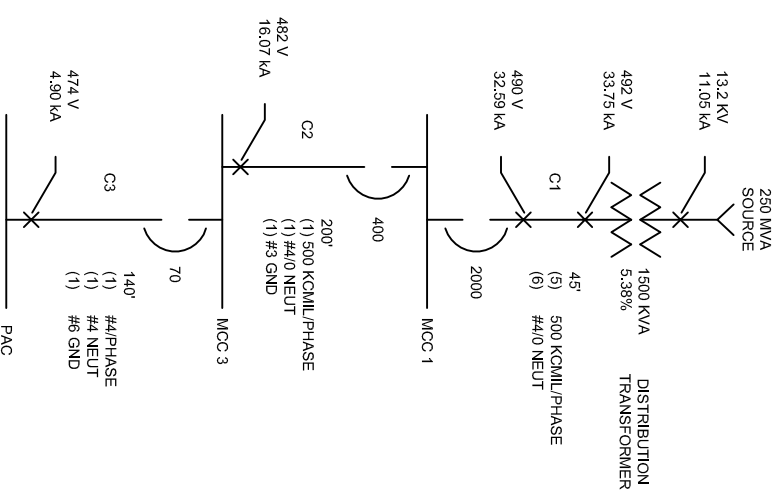


MCC 3 SCHEDULE

| TAG NO.   | DESCRIPTION       | CONTROL   | RATED HP      | RATED KW/KVA | VOLTS  | PHI   | CONNECTED AMPS | CONNECTED VA | AØ VA  | BØ VA  | CØ VA  | GENERATOR AMPS |
|---|-------------------|-----------|---------------|--------------|--------|-------|----------------|--------------|--------|--------|--------|----------------|
| B1  | BLOWER (EXISTING) |           | 40.0          |              | 480    | 3     | 52.0           | 43181        | 14394  | 14394  | 14394  |                |
| B2  | BLOWER (EXISTING) |           | 40.0          |              | 480    | 3     | 52.0           | 43181        | 14394  | 14394  | 14394  |                |
| P1  | PUMP (EXISTING)   |           | 100.0         |              | 480    | 3     | 124.0          | 102970       | 34323  | 34323  | 34323  |                |
| F1  | FAN (EXISTING)    |           | 1.5           |              | 480    | 3     | 3.0            | 2491         | 830    | 830    | 830    |                |
| F2  | FAN (EXISTING)    |           | 1.0           |              | 480    | 3     | 2.1            | 1744         | 581    | 581    | 581    |                |
| H1  | HEATER (EXISTING) |           |               |              | 480    | 3     | 90.3           | 75000        | 25000  | 25000  | 25000  |                |
| H2  | HEATER (EXISTING) |           |               |              | 480    | 3     | 18.1           | 15000        | 5000   | 5000   | 5000   |                |
| H3  | HEATER (EXISTING) |           |               |              | 480    | 3     | 18.1           | 15000        | 5000   | 5000   | 5000   |                |
| H4  | HEATER (EXISTING) |           |               |              | 480    | 3     | 6.0            | 5000         | 1667   | 1667   | 1667   |                |
|   | PAC SYSTEM FEEDER |           |               |              | 480    | 3     | 45.6           | 36000        | 12417  | 12417  | 11167  |                |
|   | TOTALS            |           | 182.5         | 110.0        | 480    | 3     | 411.1          | 339567       | 113806 | 113806 | 112356 |                |
| NON-CONTINUOUS LOAD                                 |                   |           |               |              |        |       |                |              |        |        |        |                |
| PAC SYSTEM FEEDER                                   |                   | ACTUAL VA | DEMAND FACTOR | DEMAND VA    |        |       |                |              |        |        |        |                |
| SUBTOTAL  |                   | 36000     | 0.90          | 32430        |        |       |                |              |        |        |        |                |
| MOTOR LOAD  |                   |           |               |              |        |       |                |              |        |        |        |                |
| LARGEST STANDBY                                     |                   | 102970    | 1.25          | 128712       |        |       |                |              |        |        |        |                |
| CONTINUOUS REMAINDER                                |                   | 43181     | 1.00          | 4235         |        |       |                |              |        |        |        |                |
| SUBTOTAL  |                   | 43181     | 0.85          | 36704        |        |       |                |              |        |        |        |                |
| CONTINUOUS LOAD                                     |                   |           |               |              |        |       |                |              |        |        |        |                |
| HEATERS   |                   | 110000    | 1.00          | 110000       |        |       |                |              |        |        |        |                |
| SUBTOTAL  |                   | 110000    |               | 110000       |        |       |                |              |        |        |        |                |
| TOTALS  |                   | 339567    |               | 312080       |        |       |                |              |        |        |        |                |
|   |                   | VA        |               | AMPS         |        |       |                |              |        |        |        |                |
|   |                   | 411       |               | 380          |        |       |                |              |        |        |        |                |
| PHASE LOADING                                       |                   |           |               |              |        |       |                |              |        |        |        |                |
| AØ VA   |                   | 113606    | BØ VA         |              | 113606 | CØ VA |                | 112356       |        |        |        |                |
| PHASE BALANCE                                       |                   |           |               |              |        |       |                |              |        |        |        |                |
| A-B   |                   | 100.0%    | B-C           |              | 98.9%  | C-A   |                | 98.9%        |        |        |        |                |
| NOTES:  |                   |           |               |              |        |       |                |              |        |        |        |                |
| 1. MAXIMUM 1 OF 2 BLOWERS RUN CONCURRENTLY.         |                   |           |               |              |        |       |                |              |        |        |        |                |
| 2. 15 MINUTE INTERMITTENT DUTY NEC TABLE 430.22(E). |                   |           |               |              |        |       |                |              |        |        |        |                |

PAC SYSTEM SCHEDULE

| TAG NO.  | DESCRIPTION           | CONTROL   | RATED HP      | RATED KW/KVA | VOLTS | PHI   | CONNECTED AMPS | CONNECTED VA | AØ VA | BØ VA | CØ VA | GENERATOR AMPS |
|--|-----------------------|-----------|---------------|--------------|-------|-------|----------------|--------------|-------|-------|-------|----------------|
| DCB  | DUST COLLECTOR BLOWER |           | 5.0           |              | 480   | 3     | 7.4            | 6145         | 2048  | 2048  | 2048  |                |
| DCS  | DUST COLLECTOR SHAKER |           | 0.25          |              | 480   | 3     | 0.4            | 332          | 111   | 111   | 111   |                |
| EF   | EXHAUST FAN           |           | 0.33          |              | 480   | 3     | 0.7            | 581          | 194   | 194   | 194   |                |
| BD   | BIN DISCHARGER        |           | 1.5           |              | 480   | 3     | 3.0            | 2491         | 830   | 830   | 830   |                |
| CV   | CONE VIBRATOR         |           | 0.33          |              | 480   | 3     | 0.7            | 581          | 194   | 194   | 194   |                |
| RAL  | ROTARY AIR LOCK       |           | 1.0           |              | 480   | 3     | 2.1            | 1744         | 581   | 581   | 581   |                |
| BP   | BLOWER PACKAGE        |           | 10.0          |              | 480   | 3     | 14.0           | 11628        | 3875  | 3875  | 3875  |                |
|  | HEATER                |           |               |              | 480   | 3     | 12.0           | 10000        | 3333  | 3333  | 3333  |                |
|  | TRANSFORMER           |           |               |              | 480   | 1     | 5.2            | 2500         | 1250  | 1250  |       |                |
|  | TOTALS                |           | 18.4          | 15.0         | 480   | 3     | 45.6           | 36000        | 12417 | 12417 | 11167 |                |
| NON-CONTINUOUS LOAD  |                       |           |               |              |       |       |                |              |       |       |       |                |
| TRANSFORMER  |                       | ACTUAL VA | DEMAND FACTOR | DEMAND VA    |       |       |                |              |       |       |       |                |
| SUBTOTAL   |                       | 2500      | 1.00          | 2500         |       |       |                |              |       |       |       |                |
| MOTOR LOAD   |                       |           |               |              |       |       |                |              |       |       |       |                |
| LARGEST NON-COINCIDENTAL   |                       | 11628     | 1.25          | 14532        |       |       |                |              |       |       |       |                |
| REMAINDER  |                       | 6477      | 1.00          | 5398         |       |       |                |              |       |       |       |                |
| SUBTOTAL   |                       | 23500     |               | 19930        |       |       |                |              |       |       |       |                |
| CONTINUOUS LOAD  |                       |           |               |              |       |       |                |              |       |       |       |                |
| HEATER   |                       | 10000     | 1.25          | 10000        |       |       |                |              |       |       |       |                |
| SUBTOTAL   |                       | 10000     |               | 10000        |       |       |                |              |       |       |       |                |
| TOTALS   |                       | 36000     |               | 32430        |       |       |                |              |       |       |       |                |
|  |                       | VA        |               | AMPS         |       |       |                |              |       |       |       |                |
|  |                       | 46        |               | 43           |       |       |                |              |       |       |       |                |
| PHASE LOADING  |                       |           |               |              |       |       |                |              |       |       |       |                |
| AØ VA  |                       | 12417     | BØ VA         |              | 12417 | CØ VA |                | 11167        |       |       |       |                |
| PHASE BALANCE  |                       |           |               |              |       |       |                |              |       |       |       |                |
| A-B  |                       | 100.0%    | B-C           |              | 89.9% | C-A   |                | 89.9%        |       |       |       |                |
| NOTES:   |                       |           |               |              |       |       |                |              |       |       |       |                |
| 1. DUST COLLECTOR AND SHAKER NON-COINCIDENTAL WITH BLOWER PACKAGE. |                       |           |               |              |       |       |                |              |       |       |       |                |



VOLTAGE DROP/SHORT CIRCUIT DIAGRAM

