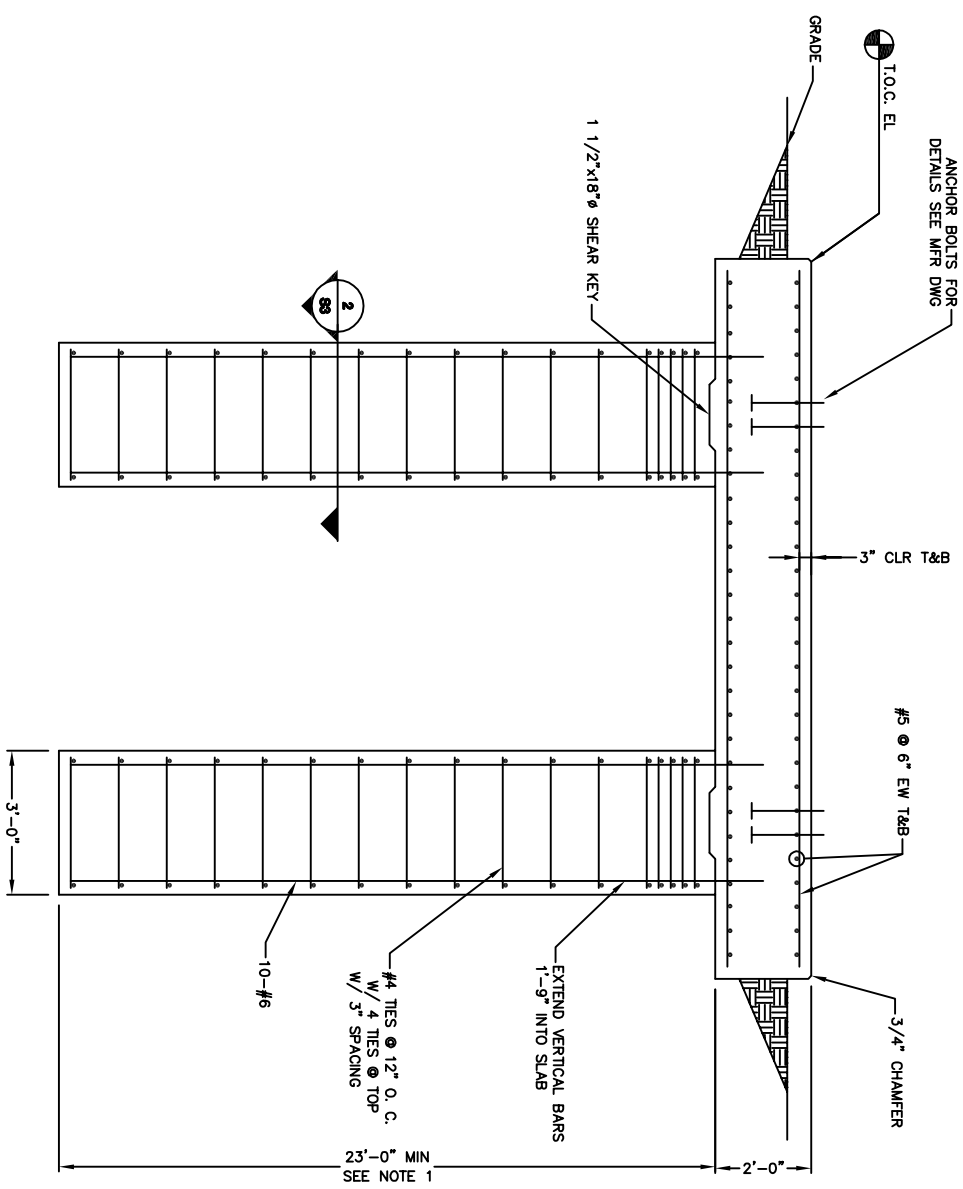
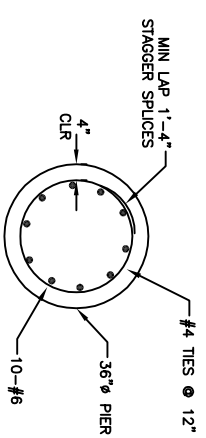


FOUNDATION PLAN



SECTION 1



SECTION 2

THIS LINE 1" LONG
SCALE ACCORDINGLY
IF DIFFERENT

1. PIERS SHALL BE EMBEDDED A MINIMUM OF 5 FEET INTO CLAYSTONE BEDROCK.
2. CONCRETE COMPRESSIVE STRENGTH SHALL BE A MINIMUM OF 4,000 PSI AT 28 DAYS. CEMENT SHALL BE TYPE II OR TYPE I-II.
3. SLAB CONCRETE SHALL HAVE A MAXIMUM SLUMP OF 3 INCHES AND SHALL HAVE AN ENTRAINED AIR CONTENT OF 5% TO 8%.
4. CONCRETE SLAB SHALL HAVE HARD TROWEL FINISH WITH LIGHT BROOM TEXTURE.
5. PIER CONCRETE SHALL HAVE A SLUMP BETWEEN 6 AND 8 INCHES WITH NO REINFORCING STEEL SHALL BE GRADE 60 AND SHALL HAVE MINIMUM SPLICE LENGTHS AS FOLLOWS:
#4 - 16"
#5 - 30"
#8 - 36"

NO.	DATE	BY	REVISIONS

DESIGNED	CHECKED	APPROVED	DATE
DHS	DHS	DHS	6/3/09

Smith Geotechnical/Engineering Consultants
1225 Red Cedar Circle, Suite H
Fort Collins Colorado 80524
(970) 490-2620

PAC SILO FOUNDATION
CITY OF GREELEY

FOUNDATION PLAN

SHEETS	SHEET
6	S3