

**ABBREVIATIONS:**

ACOUS	ACOUSTICAL	ID	INSIDE DIMENSION
ADMIN	ADMINISTRATION	INSUL	INSULATION
AFF	ABOVE FINISH FLOOR	INT	INTERIOR
AL	ALUMINUM	JC	JANITOR'S CLOSET
&	AND	JT	JOINT
A	ARCHITECTURAL	LAB	LABORATORY
@	AT	LAV	LAVATORY
B & B	BALLED & BURLAPPED	LP	LOW POINT
BSMT	BASEMENT	MFR	MANUFACTURER
BM	BEAM	MAT'L	MATERIAL
BLK	BLOCK	MAX	MAXIMUM
BD	BOARD	MECH	MECHANICAL
BOT	BOTTOM	MTL	METAL
BC	BRICK COURSES	MEZZ	MEZZANINE
BLDG	BUILDING	MIN	MINIMUM
CAB	CABINET	MOD	MODULAR
CP	CAST IN PLACE	N	NORTH
CLG	CEILING	NTS	NOT TO SCALE
C/S	CIVIL SANITARY	NO	NUMBER
CLO	CLOSET	OC	ON CENTER
COL	COLUMN	OPNG	OPENING
CONC	CONCRETE	OPP	OPPOSITE
CB	CONCRETE BLOCK	OD	OUTSIDE DIAMETER
CONT	CONTINUOUS	OHCD	OVERHEAD COILING DOOR
CJ	CONTROL JOINT	OHSD	OVERHEAD SLIDING DOOR
CTSK	COUNTERSINK	PT	PRESSURE TREATED
CU	CUBIC	PTD	PAINTED
CL	CLEAR	PNL	PANEL
DETS	DETAILS	PART	PARTITION
DIA	DIAMETER	P	PLASTER
DIM	DIMENSION	PL	PLATE
DO	DOOR OPENING	PVC	POLYVINYL CHLORIDE
DR	DOOR	PVF	POLYVINYL FLUORIDE
DN	DOWN	PCP	PORTLAND CEMENT PLASTER
DOW	DOWEL	PSF	POUNDS PER SQUARE FOOT
DWG	DRAWING	PJ	PREMOLDED JOINT
DF	DRINKING FOUNTAIN	QUAN	QUANTITY
EA	EACH	QT	QUARRY TILE
E	EAST	RAD	RADIUS
EWC	ELECTRIC WATER COOLER	R	RISER
ELEC	ELECTRICAL	REF	REFERENCE
EL	ELEVATION	REINF	REINFORCING
EMBED	EMBEDMENT	REQ'D	REQUIRED
ENGR	ENGINEER	RD	ROOF DRAIN
EQ	EQUAL	RM	ROOM
EQUIP	EQUIPMENT	RO	ROUGH OPENING
EXIST	EXISTING	SECT	SECTION
EXP	EXPANSION	SHT	SHEET
EJ	EXPANSION JOINT	SMS	SHEET METAL SCREWS
EXT	EXTERIOR	S	SOUTH
FRP	FIBER REINFORCED PLASTIC	SPECS	SPECIFICATIONS
FWP	FIBROUS WOOD PANEL	SQ	SQUARE
FIN	FINISH	S STL	STAINLESS STEEL
FIN FL	FINISH FLOOR	STD	STANDARD
FE	FIRE EXTINGUISHER	STA	STATION
FL	FLOOR	STOR	STORAGE
FD	FLOOR DRAIN	STRUCT	STRUCTURAL
GA	GAGE	SUSP	SUSPENDED
GALV	GALVANIZED	TER	TERRAZZO
GL	GLASS	TC	TERRA COTTA
GSFT	GLAZED STRUCTURAL FACE TILE	THKN'S	THICKNESS
GR	GRADE	TOS	TOP OF STEEL
GYP	GYPSUM	TOP	TOPPING
HDN	HARDENER	TSM	TRANSOM
HDW	HARDWARE	T	TREAD
HVAC	HEATING, VENTILATING AND AIR CONDITIONING	TYP	TYPICAL
HT	HEIGHT	UL	UNDERWRITER'S LABORATORIES
HP	HIGH POINT	UON	UNLESS OTHERWISE NOTED
HM	HOLLOW METAL	VAR	VARIES
HORIZ	HORIZONTAL	VERT	VERTICAL
INFO	INFORMATION	VP	VISION PANEL
		WT	WEIGHT
		W	WEST
		W/	WITH
		W/O	WITHOUT
		WD	WOOD

**SYMBOLS:**

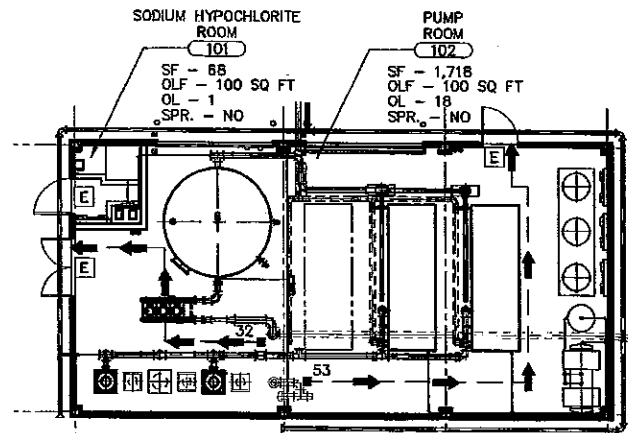
	STRUCTURAL COLUMN CENTERLINE
	EXISTING COLUMN CENTERLINE
	NUMBER
	ACCESSORY, LAB FURNITURE & EQUIPMENT KEY
	UL RATED DOOR AND FRAME IN HOURS
	FIRE RESISTANCE RATING IN HOURS
	FIRE EXTINGUISHER LOCATIONS
	BUILDING ELEVATION THIS SIDE
	CENTERLINE
	DIAMETER
	EXIT SIGN LOCATION
	WALL ELEVATION SYMBOL
	WALL NUMBER
	SHEET NUMBER
	DOOR NUMBER SYMBOL
	DOOR TYPE
	ROOM NUMBER
	CEILING FINISH SYMBOL
	HEIGHT ABOVE FINISH FLOOR
	WALL PARTITION TYPE
	ROOF DRAIN SIZE & TRIBUTARY AREA
	DEMOLITION
	NEW CONSTRUCTION
	EXISTING CONSTRUCTION

**CONSTRUCTION STAGING REQUIREMENTS**

- INSTALL HOLLOW METAL DOOR FRAMES AS SHOWN AND SPECIFIED AS THE WORK PROGRESSES. DO NOT HANG DOORS AND INSTALL FINISH HARDWARE UNTIL ALL WORK BY ALL CONTRACTORS HAS BEEN COMPLETED IN AN AREA AND THERE IS NO FURTHER CONSTRUCTION ACTIVITIES OR REQUIRED ENTRY BY ANY CONTRACTOR. DOORS AND FINISHED HARDWARE INSTALLED AND SUBSEQUENTLY DAMAGED IN ANY WAY FOR ANY REASON SHALL BE IMMEDIATELY REPLACED BY THE CONTRACTOR AT NO ADDITIONAL COST TO THE OWNER. IMMEDIATELY MEANS FROM THE TIME THE DAMAGE IS OBSERVED AND REPORTED TO THE CONTRACTOR BY CONSTRUCTION MANAGEMENT TO THE TIME OF REINSTALLATION SHALL NOT BE MORE THAN ONE MONTH.
- DOOR FRAMES SHALL BE BOXED OUT IN WOOD TO PREVENT CONSTRUCTION DAMAGE.
- INSTALL TEMPORARY 3/4" PLYWOOD DOORS AND LOCKS. REMOVE WHEN CONSTRUCTION ACCESS AND ACTIVITIES ARE FINISHED IN AN AREA AND AT THE TIME WHEN HOLLOW METAL DOORS AND FINISH HARDWARE ARE INSTALLED.

**ROOM FINISH SCHEDULE:**

	FLOOR - HEAVY-DUTY CONCRETE TOPPING		FLOOR - HEAVY-DUTY CONCRETE TOPPING
	WALLS - FRP PANEL/PAINTED CONCRETE MASONRY UNIT		WALLS - FRP PANEL/PAINTED CONCRETE MASONRY UNIT
	CEILING - FRP PANEL		CEILING - PAINTED CONCRETE PLANK



**CODE COMPLIANCE PLAN**  
SCALE: 3/32"=1'-0"

**LEGEND:**

- INDICATES DIRECTION OF EGRESS PATH  
## IS DISTANCE IN FEET TO EXIT FROM DOT
- SF - SQUARE FEET
- OLF - OCCUPANT LOAD FACTOR
- OL - OCCUPANT LOAD
- SPR. - SPRINKLERED
- NA - NOT APPLICABLE,
- 

**CODE SUMMARY:**

2006 INTERNATIONAL BUILDING CODE

OCCUPANCY CLASSIFICATION  
PUMP ROOM: F-2  
SODIUM HYPOCHLORITE ROOM: F-1

CONSTRUCTION TYPE  
II-B (TABLE 601/603)

ALLOWABLE HEIGHT AND BUILDING AREA (TABLE 503)

F-1

2 STORIES

15,000 SQ. FT.

55'-0" HIGH

F-2

3 STORIES

23,000 SQ. FT.

55'-0" HIGH

12'-0" HIGH

AREA (ACTUAL)

1 STORY

1,786 SQ. FT.

12'-0" HIGH

MEANS OF EGRESS

PER SECTION 1014.1 EXIT OR EXIT ACCESS DOORWAYS

SODIUM HYPOCHLORITE ROOM - 1 REQUIRED, 1 PROVIDED

PUMP ROOM - 2 REQUIRED, 2 PROVIDED

TABLE 1015.1 EXIT ACCESS TRAVEL DISTANCE - 200 FT. F-1, 300 FT. F-2 WITHOUT APPROVED SPRINKLER SYSTEM

AUTOMATIC SPRINKLER SYSTEM

NOT REQUIRED

EXIT DOORS  
SHALL BE OPERABLE FROM INTERIOR  
SHALL COMPLY WITH THE 2006 INTERNATIONAL BUILDING CODE SECTION 1008  
PANIC BAR REQUIRED FOR ALL DOORS

EXIT SIGNS  
INTERNALLY ILLUMINATED EXIT SIGNS SHALL BE LISTED AND LABELED AND SHALL BE INSTALLED IN ACCORDANCE WITH MANUFACTURER'S INSTRUCTIONS AND SECTION 2702. EXIT SIGNS SHALL BE ILLUMINATED AT ALL TIMES (1011.4)

ACCESSIBILITY  
NOT REQUIRED (1103.2.9)

**GENERAL NOTES:**

- THE SYMBOLS AND ABBREVIATIONS LIST ON THIS SHEET IS A COMPREHENSIVE STANDARD GUIDE INTENDED FOR GENERAL USE ON ALL PROJECTS. THEREFORE NOT ALL THE SYMBOLS AND ABBREVIATIONS CONTAINED IN THIS LIST ARE NECESSARILY USED ON THIS PARTICULAR PROJECT AND SHOULD BE USED FOR CLARIFICATION ONLY.
- ITEMS NOT NOTED ON DRAWINGS SHALL BE CONSIDERED THE SAME AS NOTED ITEMS WHICH ARE GRAPHICALLY REPRESENTED IN THE SAME MANNER.
- FOR CONCRETE AND STEEL SIZES AND CONFIGURATIONS REFERENCE 'S' DRAWINGS.
- FOR LOCATION OF HVAC EQUIPMENT AND PADS COORDINATE W/ 'H' DRAWINGS.
- FOR FLOOR DRAIN LOCATIONS REFERENCE 'P' DRAWINGS.
- FOR FINAL GRADING AND BUILDING LOCATION REFERENCE 'C' DRAWINGS.
- FOR EXACT LOCATION OF MECHANICAL EQUIPMENT VENTS COORDINATE WITH 'M' DRAWINGS.
- COORDINATE W/ ELECTRICAL DWGS. FOR LOCATION & SIZE OF RECESSED ELECTRICAL DEVICES IN WALLS. REFERENCE ELECTRICAL DRAWINGS FOR LOCATIONS AND DETAILS.
- COORDINATE W/ ELECTRICAL DRAWINGS FOR LIGHT FIXTURE TYPES AND LOCATIONS.
- COORDINATE EXTENT OF DEMOLITION WORK WITH 'D' DRAWINGS
- FE "A" INDICATES DRY CHEMICAL FIRE EXTINGUISHER TYPE SPECIFIED.
- FE "B" INDICATES CARBON DIOXIDE FIRE EXTINGUISHER TYPE SPECIFIED.
- \* VERIFY DIMENSION WITH MANUFACTURER OF EQUIPMENT SUPPLIED.
- FIELD VERIFY ALL EXISTING DIMENSIONS AND CONDITIONS.
- FOR DOOR SCHEDULE AND DETAILS, REFERENCE SHEET A6.
- FOR BOLLARD DETAILS, REFERENCE SHEET A6.
- UNLESS OTHERWISE NOTED ON DRAWINGS, ALL MASONRY WALLS SHALL BE REINFORCED WITH A MINIMUM REINFORCING AS FOLLOWS:  
A. BOND BEAM HORIZONTAL REINFORCING BARS SHALL BE CONTINUOUS AT WALL CORNERS AND INTERSECTIONS.  
B. ALL WALL CELLS WITH VERTICAL REINFORCING BARS SHALL BE GROUTED SOLID FULL HEIGHT AND WIDTH.  
C. ALL REINFORCING BARS SHALL BE CONTINUOUS UNLESS OTHERWISE SHOWN. ALL HOOKS SHALL BE STANDARD. LAP BARS ACCORDING TO STD. LAP LENGTHS.  
D. UNLESS OTHERWISE NOTED, ALL VERTICAL REINFORCING SHALL HAVE MATCHING DOWELS.  
E. A VERTICAL REINFORCING BAR SHALL BE PLACED AT ALL WALL CORNERS AND INTERSECTIONS.  
F. THE BARS IN HORIZONTAL LAP SPLICES SHALL BE ALIGNED VERTICALLY AND TIED.

**ENERGY CODE:**

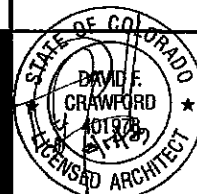
- ALL WORK PERFORMED SHALL COMPLY WITH THE 2003 INTERNATIONAL ENERGY CODE.  
- GLAZING AREA DOES NOT EXCEED THE PERCENTAGE OF THE GROSS WALL AREA SPECIFIED IN TABLE 802.1 (802.2(26)).
- AIR LEAKAGE OF PREFABRICATED FENESTRATION SHALL BE DETERMINED IN ACCORDANCE WITH AAMA/WDMA 101/LS-2 BY AN ACCREDITED, INDEPENDENT LABORATORY, AND LABELED & CERTIFIED BY THE MANUFACTURER (802.3.1).
- OPENINGS AND PENETRATIONS IN THE BUILDING ENVELOPE SHALL BE SEALED WITH CAULKING MATERIALS OR CLOSED WITH GASKETING SYSTEMS COMPATIBLE WITH THE CONSTRUCTION MATERIALS AND LOCATION. JOINTS AND SEAMS SHALL BE SEALED IN THE SAME MANNER OR TAPED OR COVERED WITH A MOISTURE VAPOR-PERMEABLE WRAPPING MATERIAL SEALING MATERIALS SPANNING JOINTS BETWEEN CONSTRUCTION MATERIALS SHALL ALLOW FOR EXPANSION AND CONTRACTION OF THE CONSTRUCTION MATERIALS (802.3.2).

BUILDING ENVELOPE REQUIREMENTS—CLIMATE ZONE 11b		
ENVELOPE COMPONENT	R-VALUE REQUIRED	R-VALUE PROVIDED
ROOF	R-30	R-30
EXTERIOR WALL (PREMANUFACTURED BUILDING)	R-11	R-11
SLAB ON GRADE (UNHEATED)	R-0	R-0
BASEMENT WALL	R-0	R-0
SLAB PERIMETER	R-0	R-0
CRAWL SPACE WALL	R-0	NOT APPLICABLE
DOORS (SWINGING/ROLL-UP)	ANY	ANY

**HAZARDOUS MATERIAL INVENTORY STATEMENT TABLE**  
PUMP STATION

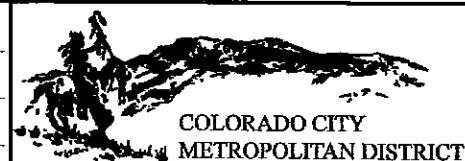
CHEMICAL	HAZARD CLASS	CAS No.	MANUFACTURER'S NAME	INTERIOR STORAGE	EXEMPT QUANTITY	IBC OCCUPANCY CLASSIFICATION	NFPA RATING			
							H	F	R	0
SODIUM HYPOCHLORITE (10%)	CORROSIVE	7681-52-9	TO BE DETERMINED	(1) 300 GALLON TOTE	YES	F-1	2	0	1	-

**MALCOLM PIRNIE**



REVISIONS			
NO.	BY	DATE	REMARKS

DES: MH  
DWN: MH  
CKD: [Signature]



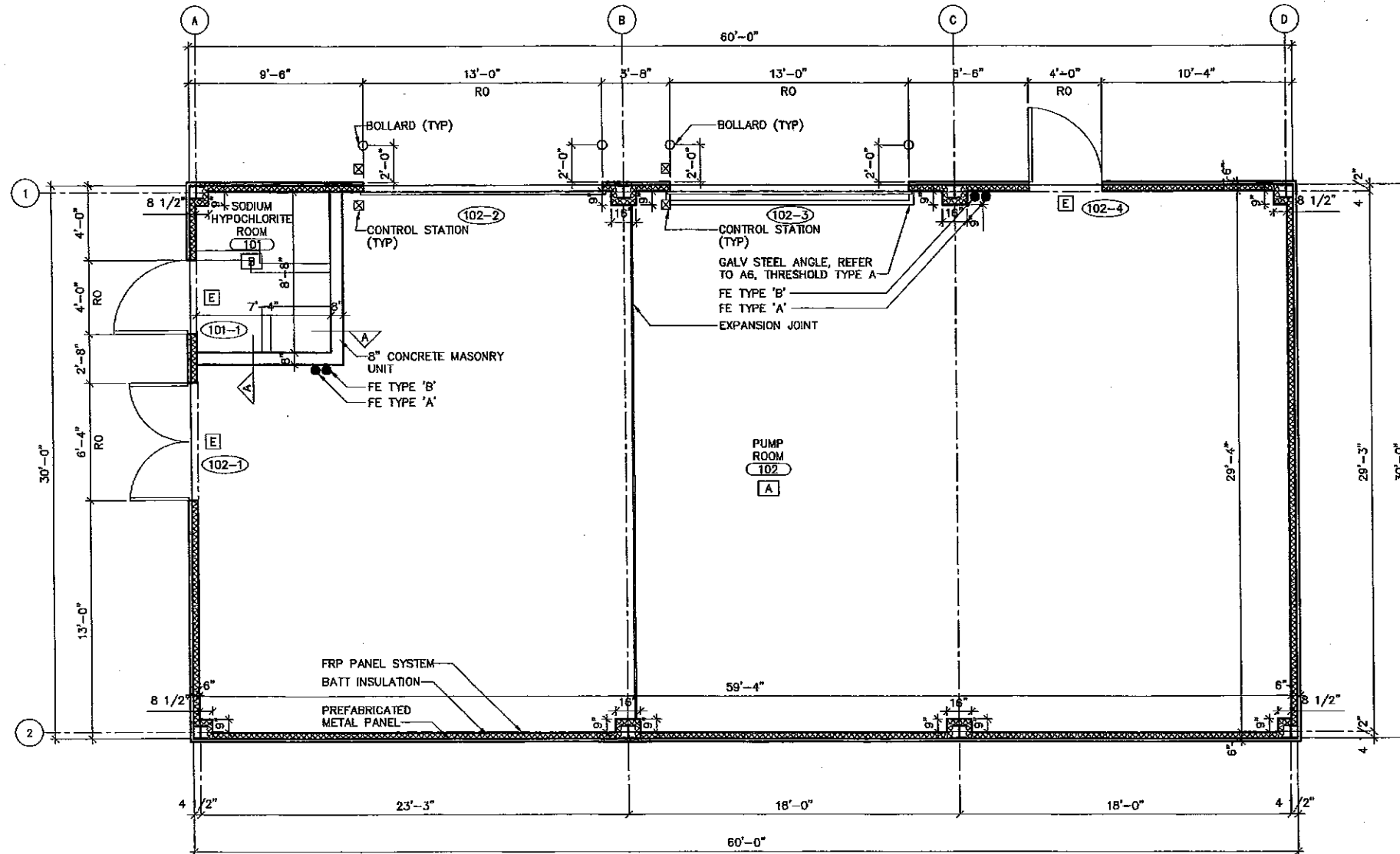
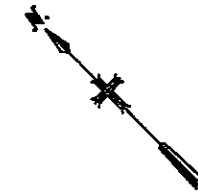
COLORADO CITY METROPOLITAN DISTRICT  
COLORADO CITY, COLORADO  
COLD SPRING WTP IMPROVEMENTS

ARCHITECTURAL NOTES, SYMBOLS AND ABBREVIATIONS  
SCALE: 1/4" = 1'-0" (UON)

COPYRIGHT © 2007 MALCOLM PIRNIE, INC.  
DATE: AUGUST 2009  
A SHEET 1 OF 6  
CAD REF. NO. 6450A002

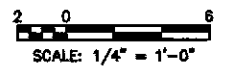
**NOTES:**

1. PROVIDE SMOOTH, IMPACT RESISTANT FIBERGLASS REINFORCED PLASTIC OVERLAY WITH A SCRATCH-RESISTANT SURFACE LAMINATED TO A CORRUGATED PLASTIC CORE. TRIM AND FASTENERS SHALL BE PROVIDED IN ACCORDANCE WITH MANUFACTURER'S RECOMMENDATIONS FOR A COMPLETE WALL AND CEILING SYSTEM. PROVIDE FIBERCORR PANELS AS MANUFACTURED BY NUDDO, A F.V. VLECK COMPANY OR EQUAL.

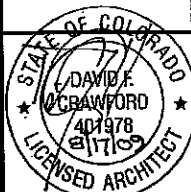


FLOOR PLAN AT EL. 6225.73

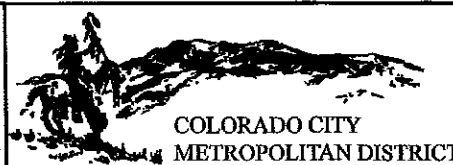
SCALE: 1/4" = 1'-0"



**MALCOLM  
PIRNIC**



NO.	BY	DATE	REVISIONS	REMARKS



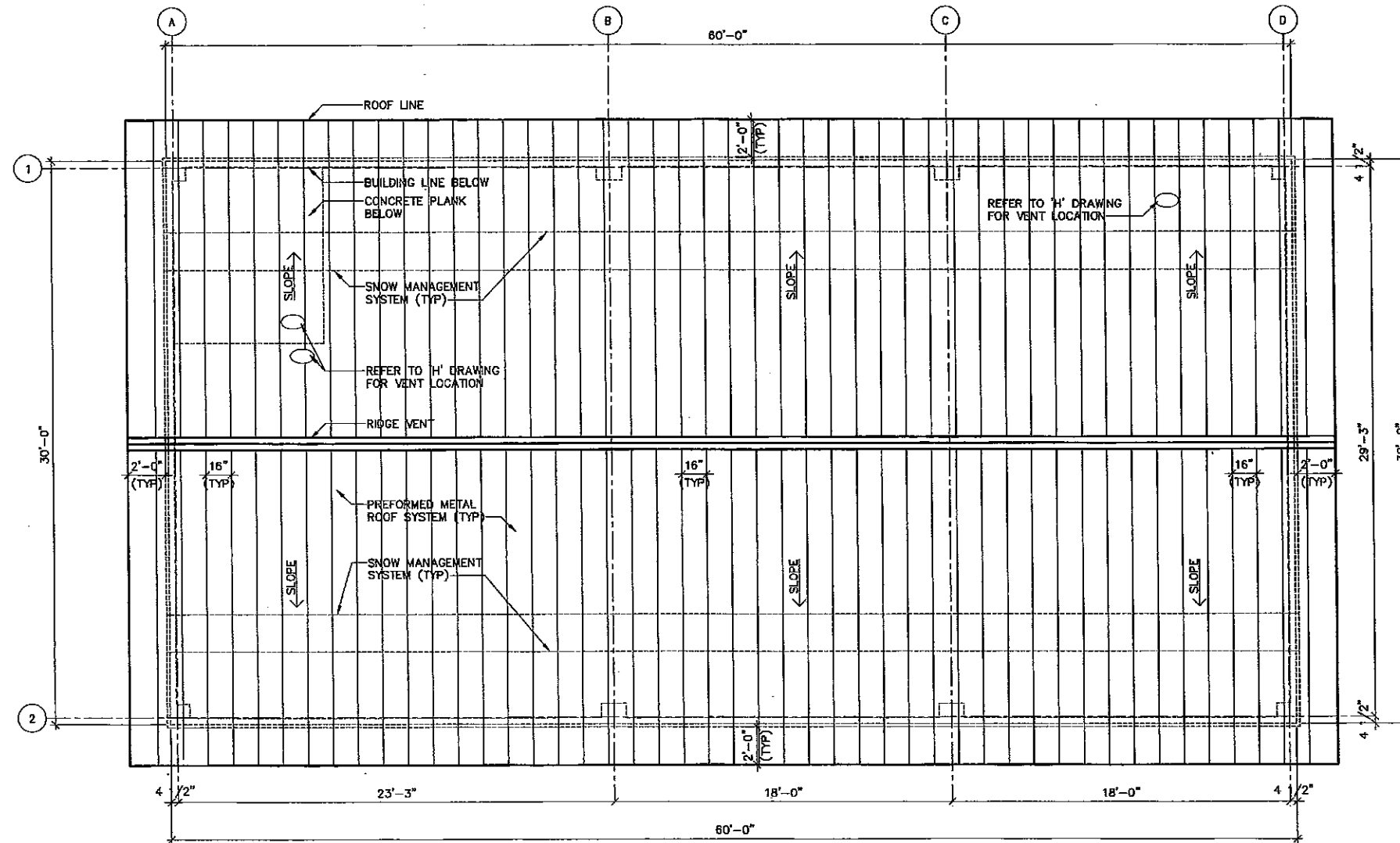
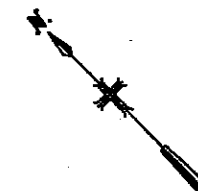
COLORADO CITY METROPOLITAN DISTRICT  
COLORADO CITY, COLORADO  
COLD SPRING WTP  
IMPROVEMENTS

ARCHITECTURAL  
FLOOR PLAN AT  
EL. 6225.73  
SCALE: 1/4" = 1'-0"

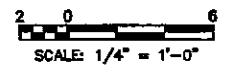
COPYRIGHT © 2007  
MALCOLM PIRNIC, INC.  
DATE AUGUST 2009  
A SHEET 2 OF 6  
CAD REF. NO. 6450A002

**NOTES:**

1. PROVIDE METAL ROOF HOLD DOWN CLIP SPACING REQUIRED TO RESIST WIND UPLIFT FORCES FOR EACH ZONE OF THE BUILDING BASED ON FM 1-7 WIND FORCES ON BUILDINGS & OTHER STRUCTURES' BASE CALCULATIONS ON GROUND ROUGHNESS "C" AND 100MPH WIND ISOTACH.
2. ALL AIR TERMINAL DOWN CONDUCTORS SHALL BE CONCEALED (BELOW FINISH ROOFING SYSTEM). PROVIDE CONCEALED RIDGE AND FLAT SURFACE BASES. COORDINATE WITH E DRAWINGS.
3. PROVIDE SNOW MANAGEMENT SYSTEM #4000 SNOW GUARD USING S-5 BY ALPINE SNOWGUARDS. A DIVISION OF VERMONT SLATE & COPPER SERVICES, INC. OR EQUAL. SPACING SHALL BE IN ACCORDANCE WITH MANUFACTURER'S RECOMMENDATIONS. SUBMIT MANUFACTURER'S SPECIFICATIONS, STANDARD DETAIL DRAWINGS, RECOMMENDED LAYOUT AND INSTALLATION INSTRUCTIONS FOR REVIEW PRIOR TO BEGINNING WORK.



**ROOF PLAN**  
SCALE: 1/4" = 1'-0"



**MALCOLM PIRNIE**

NO.	BY	DATE	REVISIONS	REMARKS

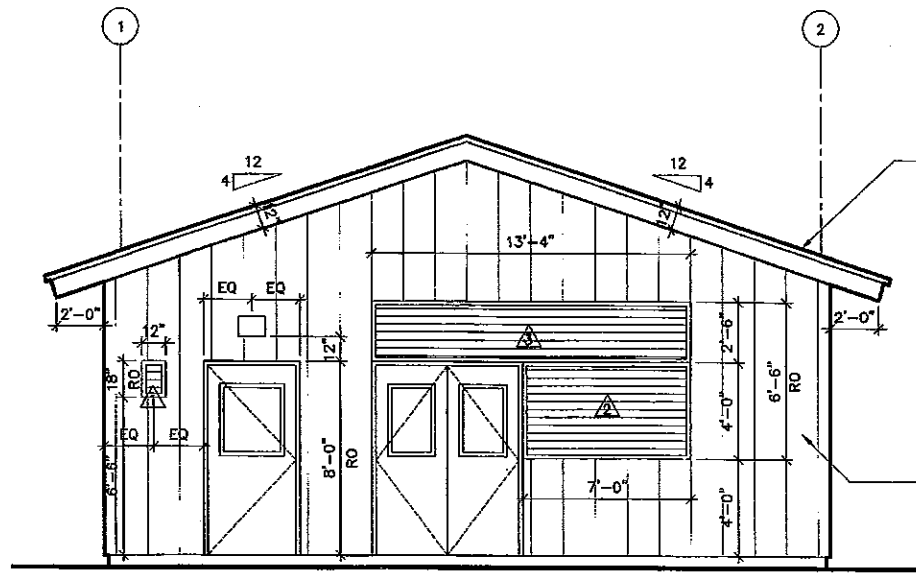
DES. MH  
DWN. MH  
CKD.



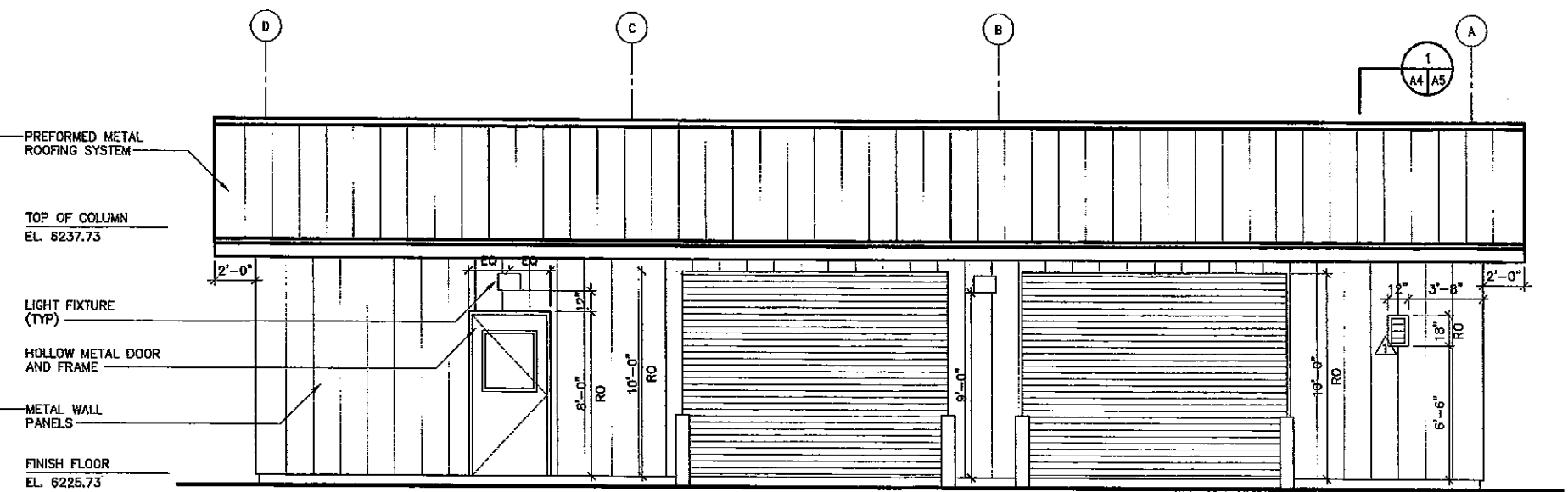
COLORADO CITY METROPOLITAN DISTRICT  
COLORADO CITY, COLORADO  
**COLD SPRING WTP IMPROVEMENTS**

**ARCHITECTURAL ROOF PLAN**  
SCALE: 1/4" = 1'-0"

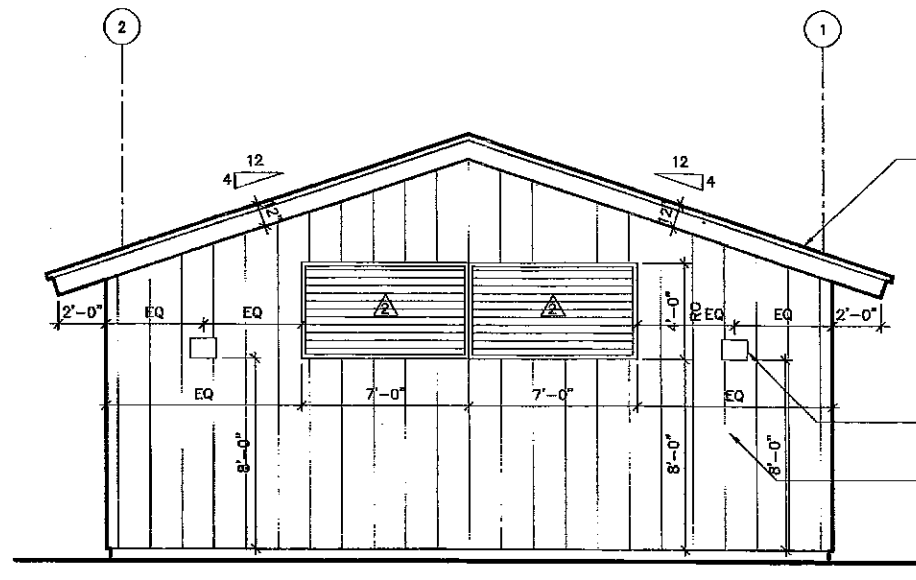
COPYRIGHT © 2007  
MALCOLM PIRNIE, INC.  
DATE: AUGUST 2009  
A SHEET 3 OF 6  
CAD REF. NO. 6450A002



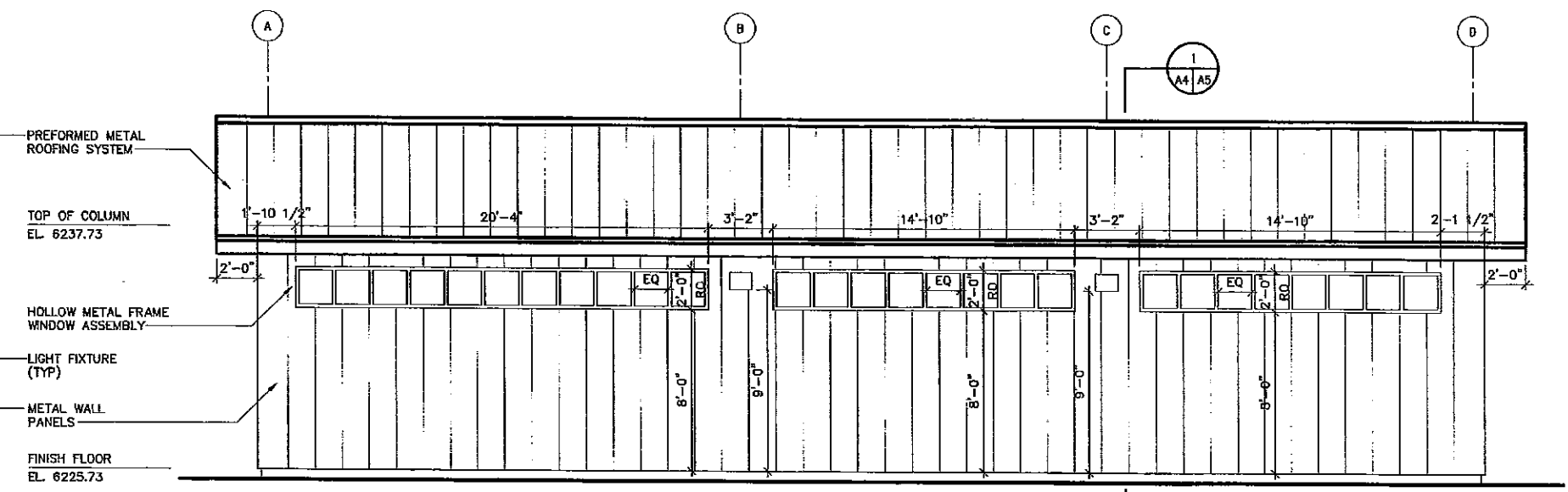
**NORTH ELEVATION**  
SCALE: 1/4" = 1'-0"



**EAST ELEVATION**  
SCALE: 1/4" = 1'-0"



**SOUTH ELEVATION**  
SCALE: 1/4" = 1'-0"



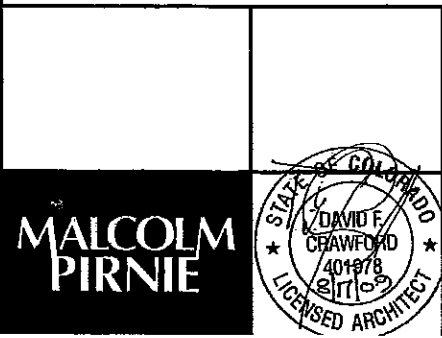
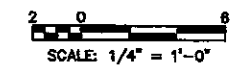
**WEST ELEVATION**  
SCALE: 1/4" = 1'-0"

**NOTES:**

1. FOR LIGHT FIXTURE TYPES COORDINATE WITH 'E' DRAWINGS.
2. FOR LOUVER DETAILS REFERENCE SHEET A6.
3. FOR DOOR AND FRAME DETAILS REFERENCE SHEET A6.
4. \* VERIFY DIMENSION WITH MANUFACTURER OF EQUIPMENT SUPPLIED.
5. PENETRATIONS THROUGH EXTERIOR METAL WALL PANELS ARE NOT SHOWN. BUILDING MANUFACTURER SHALL PROVIDE FLEXIBLE FLASHING DEVICE AT ALL WALL PENETRATIONS. CONTRACTOR SHALL COORDINATE.

**LOUVER SCHEDULE:**

- △ 1'-0" X 1'-6" FIXED, EXTRUDED LOUVER WITH MOTORIZED DAMPER
- △ 7'-0" X 4'-0" FIXED, EXTRUDED LOUVER WITH MOTORIZED DAMPER
- △ 13'-4" X 2'-6" FIXED EXTRUDED LOUVER WITH MOTORIZED DAMPER



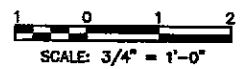
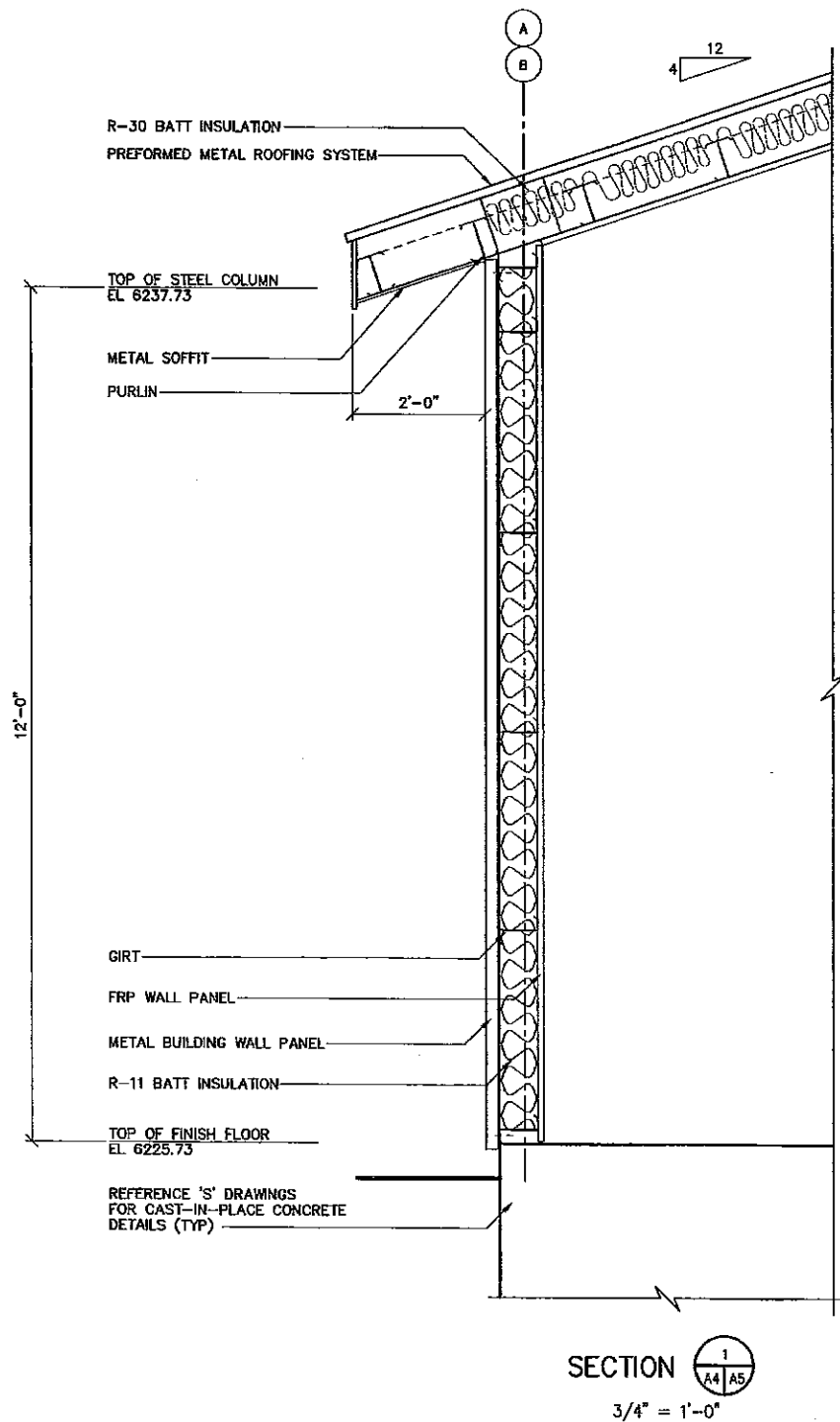
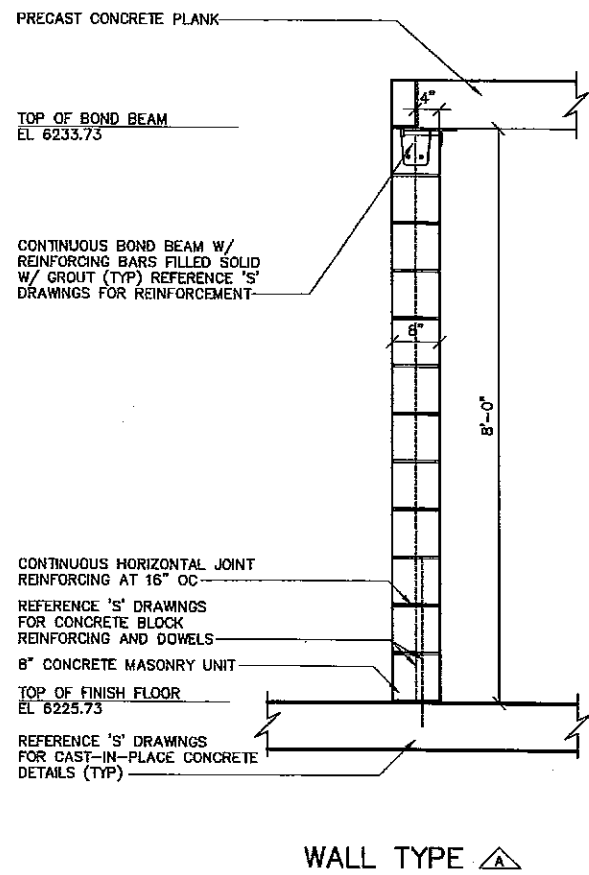
REVISIONS			
NO.	BY	DATE	REMARKS



COLORADO CITY METROPOLITAN DISTRICT  
COLORADO CITY, COLORADO  
**COLD SPRING WTP IMPROVEMENTS**

**ARCHITECTURAL ELEVATIONS**  
SCALE: 1/4" = 1'-0"

COPYRIGHT © 2007  
MALCOLM PIRNIE, INC.  
DATE: AUGUST 2009  
A SHEET 4 OF 6  
CAD REF. NO. 6450A004



**MALCOLM  
PIRNIE**

STATE OF COLORADO  
DAVID E. GRANFORD  
AQ1978  
LICENSED ARCHITECT

NO.	BY	DATE	REVISIONS	REMARKS

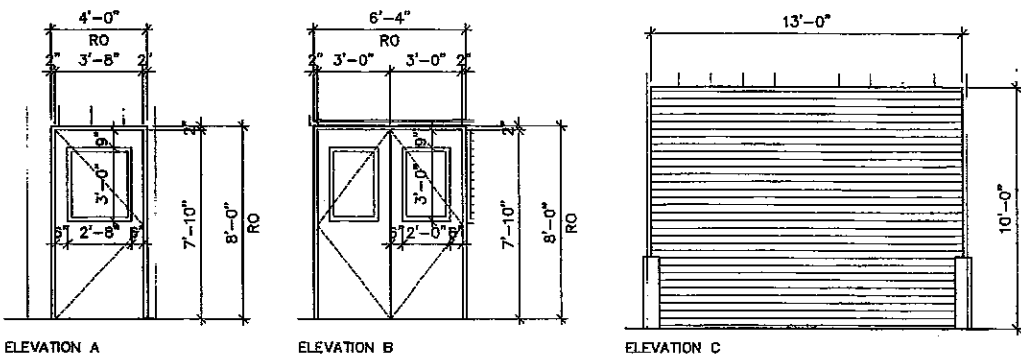
DES MH  
DWN MH  
CHK



COLORADO CITY METROPOLITAN DISTRICT  
COLORADO CITY, COLORADO  
COLD SPRING WTP  
IMPROVEMENTS

ARCHITECTURAL  
WALL SECTIONS  
SCALE: 3/4" = 1'-0"

COPYRIGHT © 2007  
MALCOLM PIRNIE, INC.  
DATE AUGUST 2009  
A SHEET 5 OF 6  
CAD REF. NO. 8450A005



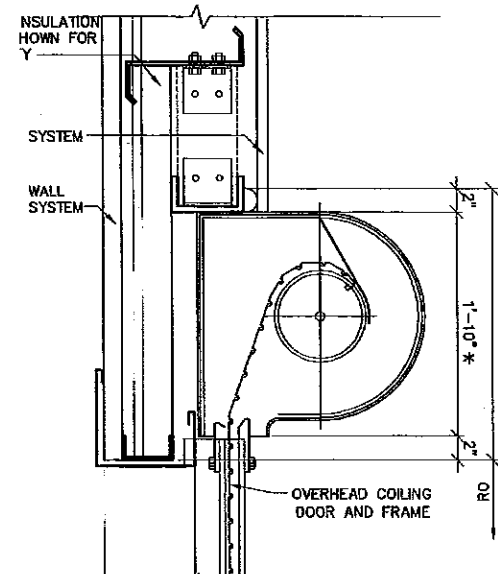
**FINISH HARDWARE SCHEDULE:**

- HARDWARE SET 1:**  
 -HEAVY-DUTY HINGES  
 -PANIC EXIT DEVICE  
 -OVERHEAD, SURFACE MOUNTED, DOOR CLOSER  
 -HEAVY-DUTY, CONCEALED OVERHEAD HOLDER AND STOP  
 -STRIPPING AND SEALS  
 -THRESHOLD  
 -SILENCERS
- HARDWARE SET 2:**  
 -HEAVY-DUTY HINGES  
 -PANIC EXIT DEVICE (CONCEALED BOTH LEAFS)  
 -OVERHEAD, SURFACE MOUNTED, DOOR CLOSER (BOTH LEAFS)  
 -HEAVY-DUTY, CONCEALED OVERHEAD HOLDER AND STOP (BOTH LEAFS)  
 -STRIPPING AND SEALS  
 -THRESHOLD  
 -DUST PROOF STRIKE  
 -ASTRAGAL  
 -SILENCERS

DOOR NUMBER	FRAME SIZE		DOOR				FRAME		DETAILS			PH	HDW	REMARKS		
	WIDTH	HEIGHT	TYPE	WIDTH	HEIGHT	MAT'L	THK	ELE	TYPE	MAT'L	UL				HEAD	JAMB
<b>PUMP STATION</b>																
101-1	4'-0"	8'-0"	A	3'-8"	7'-10"	HM	1 3/4"	A	A	HM		A	A	A	R	1
102-1	6'-4"	8'-0"	B	6'-0"	7'-10"	HM	1 3/4"	B	A	HM		A	A	A	R	2
102-2	13'-0"	10'-0"	C	-	-	AL	-	C	B	AL		B	B	B	NR	-
102-3	13'-0"	10'-0"	C	-	-	AL	-	C	B	AL		B	B	B	NR	-
102-4	4'-0"	8'-0"	A	3'-8"	7'-10"	HM	1 3/4"	A	A	HM		A	A	A	R	1

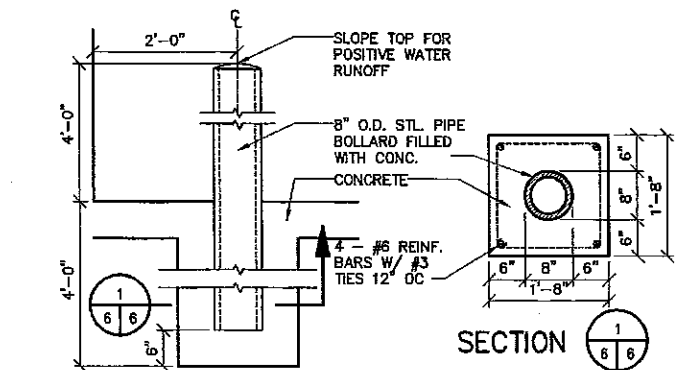
**DOOR ELEVATIONS**

SCALE: 1/4" = 1'-0"



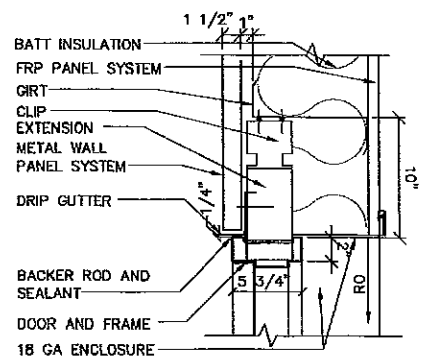
NOTE: COORDINATE SUPPORT FOR OVERHEAD COILING DOOR WITH BUILDING MANUFACTURER  
 \* TO BE COORDINATED WITH DOOR SUPPLIER

**HEAD A**

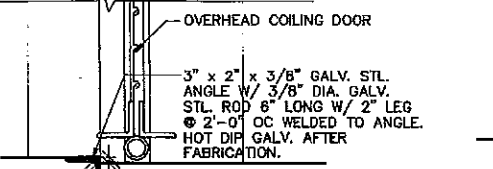


**TYPICAL BOLLARD DETAIL**

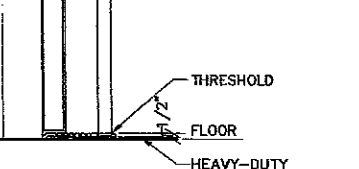
SCALE: 3/4" = 1'-0"



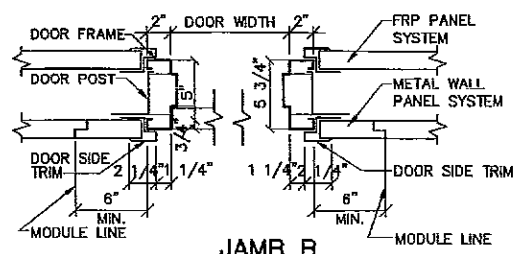
**HEAD B**



**THRESHOLD A**

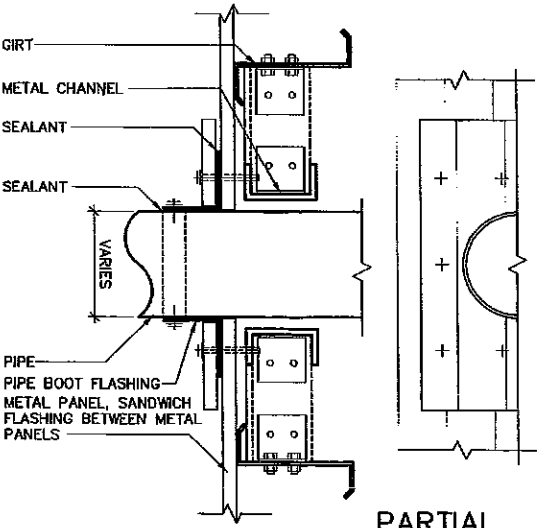


**THRESHOLD B**



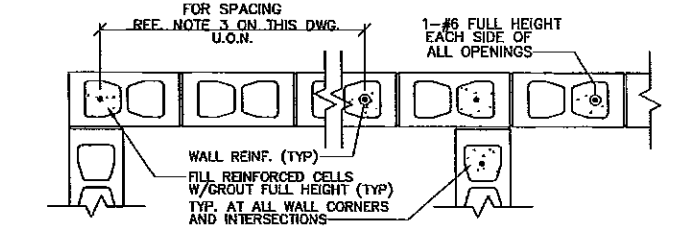
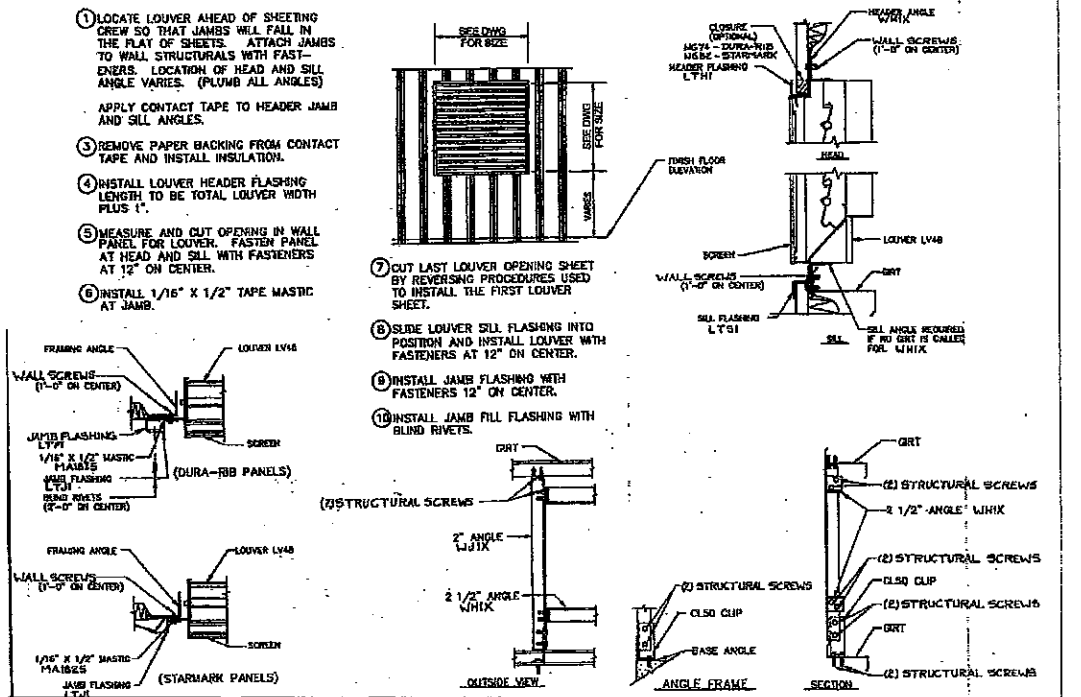
**DOOR DETAILS**

SCALE: 1 1/2" = 1'-0"



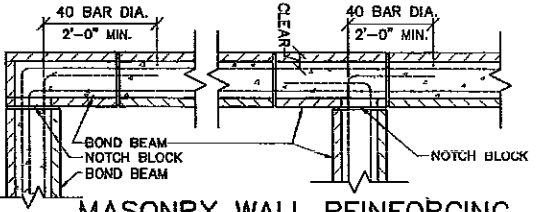
**SECTION PIPE WALL/ROOF PENETRATION**

SCALE: 1 1/2" = 1'-0"



**VERTICAL MASONRY WALL REINFORCEMENT**

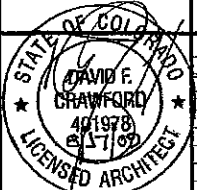
SCALE: 1" = 1'-0"



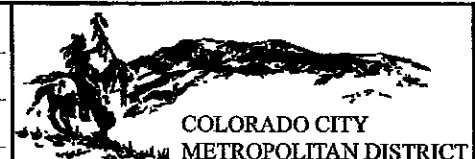
**MASONRY WALL REINFORCING AT BOND BEAM W/ 2 REINF. BARS**

SCALE: 1" = 1'-0"

**MALCOLM PIRNIE**



NO.	BY	DATE	REVISIONS	REMARKS



COLORADO CITY METROPOLITAN DISTRICT  
 COLORADO CITY, COLORADO  
**COLD SPRING WTP IMPROVEMENTS**

ARCHITECTURAL  
**DOOR SCHEDULE AND MISCELLANEOUS DETAILS**  
 SCALE: 1/4" = 1'-0" (UON)

COPYRIGHT © 2007 MALCOLM PIRNIE, INC.  
 DATE: AUGUST 2009  
 A SHEET 6 OF 6  
 CAD REF. NO. 6450A006