

CONTRACTOR TO VERIFY LOCATION AND REMOVE PIPE AS NECESSARY

APPROXIMATE EDGE OF 100 YEAR FLOODPLAIN

8" FINISHED WATER

HEADWALL SEE DETAIL

DRAIN NOT PERFORATED THIS LENGTH

TREES TO BE REMOVED

8" OVERFLOW AND DRAIN ENCASE EXISTING PIPE SEE DETAIL SHEET C-2

REMOVE AND REPLACE FENCE WITH 6" CHAIN LINK FENCING AND THREE STRAND BARBWIRE

REMOVE AND REPLACE GEOMEMBRANE LINER SEE DETAIL CONTRACTOR TO VERIFY THE EXTENTS OF THE EXISTING MEMBRANE

CONTRACTORS FIELD OFFICE

CONTROL POINT NO. 2

CONTRACTORS STAGING AREA AND PARKING AREA

CONTROL POINT NO. 1

CONTROL POINT NO. 3

**GENERAL NOTES:**

1. CONTRACTOR TO VERIFY LOCATION OF ALL UNDERGROUND UTILITIES.
2. REPLACE LANDSCAPING TO EXISTING CONDITIONS UPON COMPLETION OF WORK.
3. REPLACE ACCESS ROAD TO EXISTING CONDITIONS UPON COMPLETION OF WORK.
4. CONTRACTOR SHALL PROVIDE TRACKING PAD AT ACCESS ROAD ENTRANCE TO MINIMIZE DEBRIS ON HIGHWAY.

**SURVEY NOTES:**

1. THE BEARINGS SHOWN HEREON HAVE BEEN ROTATED TO THE COLORADO STATE PLANE COORDINATE SYSTEM OF 1992, AND THEREFORE DO NOT MATCH THE BEARINGS SHOWN ON THE RECORDED DEED.
2. ELEVATIONS SHOWN HEREON, ARE BASED ON NATIONAL GEODETIC VERTICAL DATUM OF 1927, PER THE PUEBLO COUNTY G.P.S. CONTROL MONUMENT DATA SUPPLEMENTAL HANDOUT, THE MONUMENTS USED FOR THIS SURVEY ARE 4723, 4735 AND MANGINI. ON SITE HORIZONTAL AND VERTICAL CONTROL IS SHOWN HEREON AS CONTROL POINT NO. 1, CONTROL POINT NO. 2 AND CONTROL POINT NO. 3.
3. DISTANCES SHOWN HEREON, EXCEPT AS NOTED ARE GROUND DISTANCES. THE COMBINATION FACTOR FOR THIS PLAT IS 1.000294638. THE GROUND DISTANCE WHEN DIVIDED BY THE COMBINATION FACTOR WILL PROVIDE THE GRID DISTANCE, AND THE GROUND COORDINATES WHEN DIVIDED BY THE COMBINATION FACTOR WILL PROVIDE THE GRID COORDINATES BASED ON THE COLORADO STATE PLANE COORDINATE SYSTEM OF 1992. THE PUEBLO COUNTY G.P.S. CONTROL MONUMENTS USED FOR THIS SURVEY ARE 4723 AND 4735.
4. LEGAL DESCRIPTION COMES FROM THE PUEBLO COUNTY, COLORADO RECORDS AS SHOWN ON SCHEDULE NUMBER 4727000010.

SCALE: 1" = 20'



REVISIONS			
NO.	BY	DATE	REMARKS

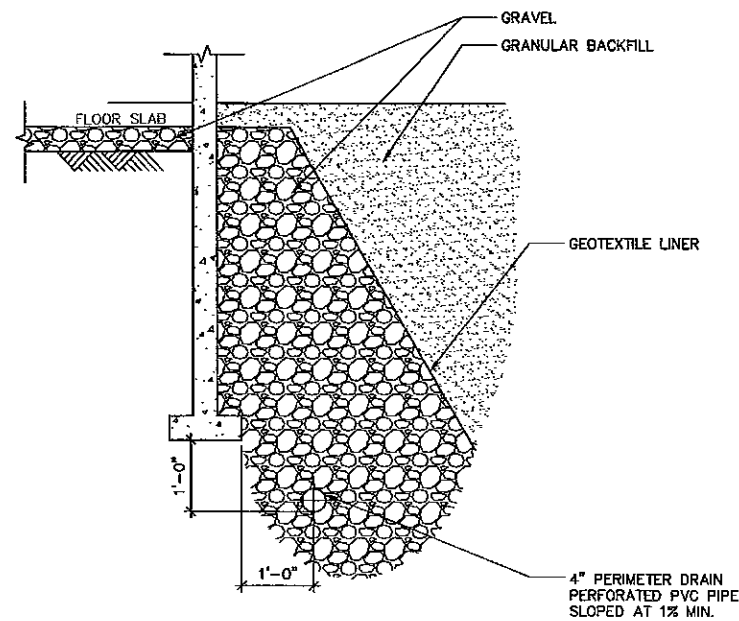
DES: NF  
 DWN: JR  
 CKD: BCT



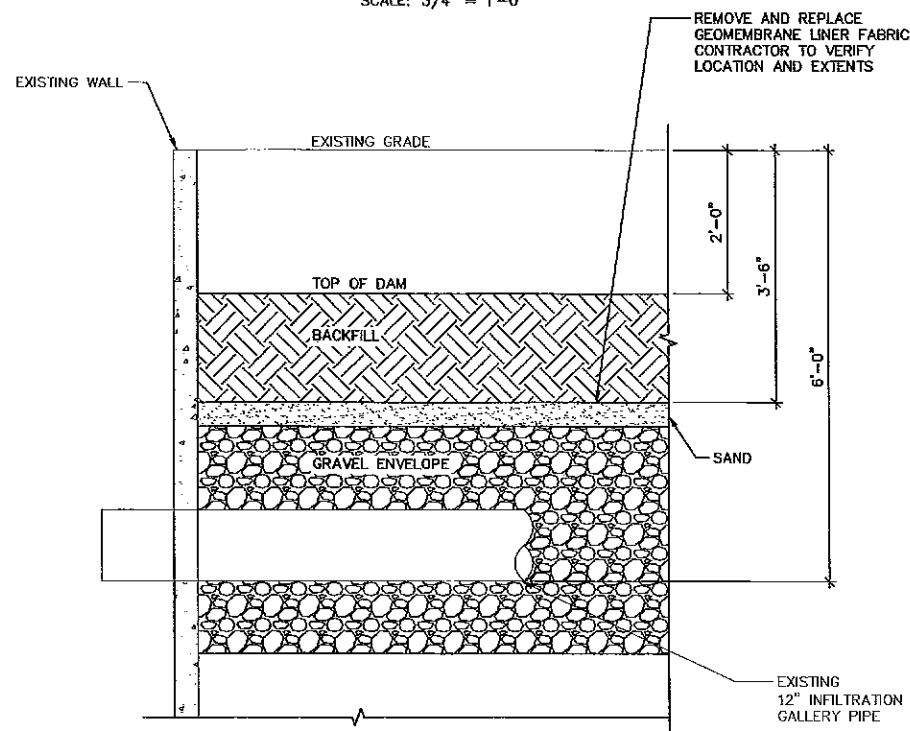
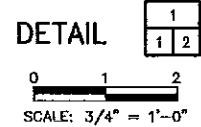
COLORADO CITY METROPOLITAN DISTRICT  
 COLORADO CITY, COLORADO  
 COLD SPRING WTP IMPROVEMENTS

CIVIL  
 OVERALL SITE PLAN  
 SCALE: AS SHOWN

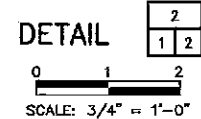
COPYRIGHT © 2007  
 MALCOLM PIRNIE, INC.  
 DATE: AUGUST 2009  
 C SHEET 1 OF  
 CAD REF. NO. 6450C001



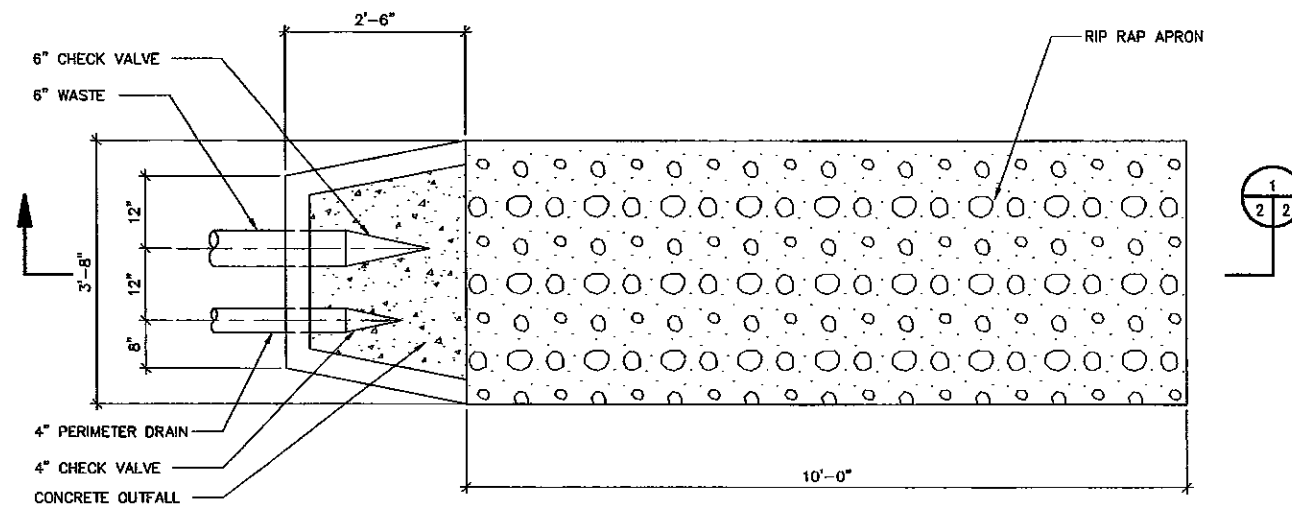
PERIMETER DRAIN



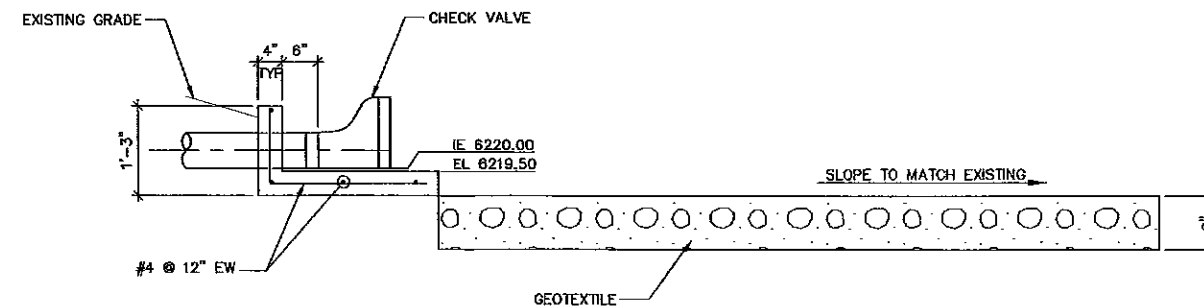
GEOTEXTILE REPLACEMENT



NOTE: ALL DIMENSIONS SHOWN ARE APPROXIMATE. CONTRACTOR SHALL FIELD VERIFY LOCATIONS AND GRADATION PRIOR TO INSTALLATION OF GEOMEMBRANE LINER

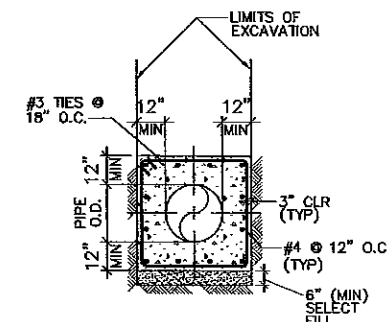
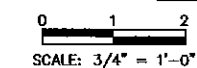


HEADWALL PLAN



SECTION 1 2 2

HEADWALL DETAIL 3 1 2



CONCRETE ENCASEMENT NOT TO SCALE

MALCOLM PIRNIE



REVISIONS				
NO.	BY	DATE	REVISIONS	REMARKS

DES NF  
DWN JR  
CRD BSI



COLORADO CITY METROPOLITAN DISTRICT  
COLORADO CITY, COLORADO  
COLD SPRING WTP  
IMPROVEMENTS

CIVIL  
DETAILS

SCALE: 3/4" = 1'-0"

COPYRIGHT © 2007  
MALCOLM PIRNIE, INC.  
DATE AUGUST 2009  
C SHEET 2 OF  
CAD REF. NO. 6450C002