

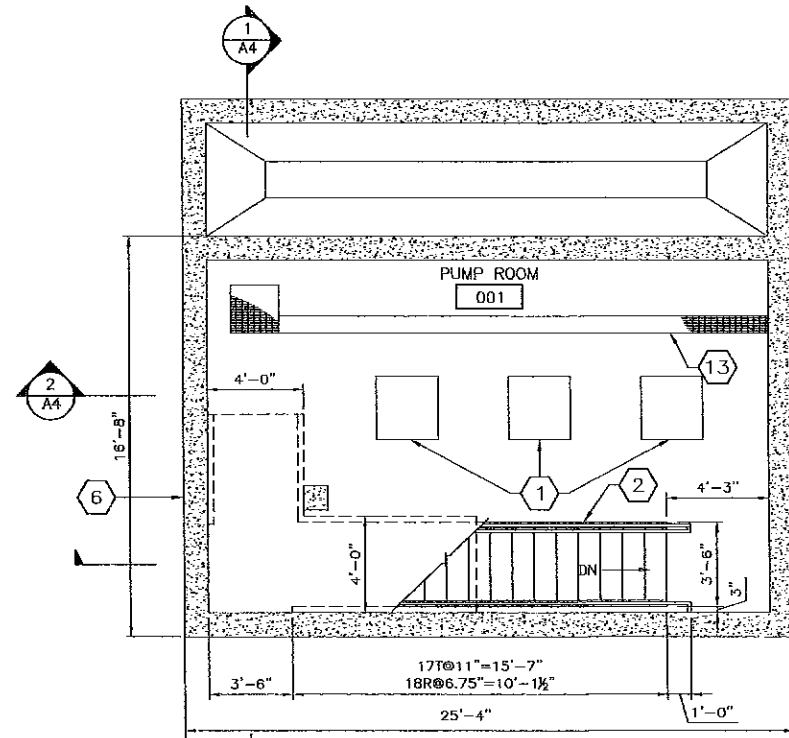
**GENERAL NOTES**

- COORD W/ PROCESS DRAWINGS FOR LAYOUTS OF PROCESS EQUIPMENTS, PLATFORMS, CURBS, AND PADS.
- DIMENSIONS OF DOORS, WINDOWS & OTHER ITEMS IN WALLS ARE BASED ON NOMINAL MASONRY COURSING OR ROUGH OPENING DIMENSIONS. FIELD VERIFY AND/OR COORDINATE DIMENSIONS OF ITEMS W/MASONRY &/OR FRMG CONSTRUCTION AS REQUIRED.

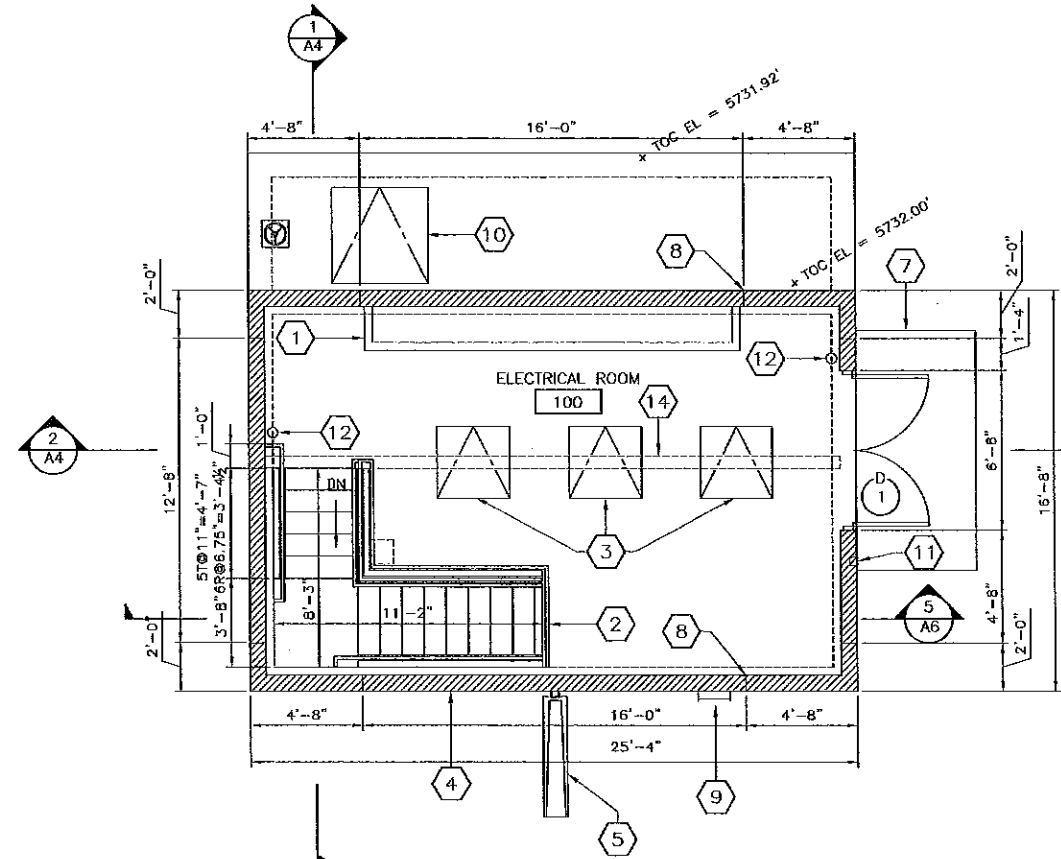
**KEY NOTES**

KEY NOTE REFERENCE NUMBER

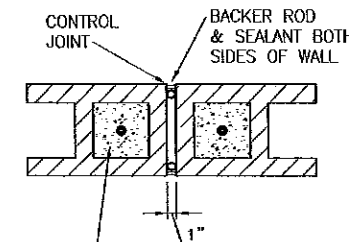
- CONC. CURB AND/OR PAD BELOW EQUIP, COORD W/PROCESS & STRUCT DWGS, VERIFY SIZE W/ACTUAL SIZE OF EQUIP, TYP
- GALV. STL STAIRS & RAILING, TYP, RE: STRUCT & 5/A6
- ACCESS HATCH TYPE 'A' RE: 4/A6
- THROUGH WALL BRICK
- 5'-0" LONG CONCRETE SPLASH BLOCK @ DOWNSPOUT
- CONCRETE WALL W/ BITUMINOUS DAMPPROOFING @ EXT, TYP
- CONCRETE APRON, 10'-0" X 5'-0"
- MASONRY CONTROL JOINT, TYP, RE: 3/A1
- ALUMINUM LADDER, RE: 3/A5, CENTER IN 2'-8" WIDE NOTCH, RE: 1/A2
- ACCESS HATCH TYPE 'B', RE: 4/A6, SIM
- LOCK BOX
- FIRE EXTINGUISHER
- TRENCH DRAIN W/ GALV STL GRATING, RE: STRUCT
- LINE OF MONORAIL ABOVE



1 LOWER LEVEL FLOOR PLAN  
1/4" = 1'-0"



2 MAIN LEVEL FLOOR PLAN  
1/4" = 1'-0"



(1) CONT. BAR, SIZE TO MATCH VERT WALL REINF, & FULL GROUTED CELL EA. SIDE OF JOINT

3 MASONRY CONTROL JOINT  
1 1/2" = 1'-0"

**CODE ANALYSIS SUMMARY**

<b>BUILDING CODES:</b> 2006 INTERNATIONAL BUILDING CODE 2006 INTERNATIONAL MECHANICAL CODE 2006 INTERNATIONAL FUEL GAS CODE 2006 INTERNATIONAL PLUMBING CODE 2005 NATIONAL ELECTRICAL CODE	<b>NUMBER OF OCCUPANTS:</b> LOWER LEVEL 342 SF @ 300 SF/OCC = 2 OCC MAIN LEVEL 368 SF @ 300 SF/OCC = 2 OCC TOTAL 4 OCC
<b>OCCUPANCY GROUP:</b> F-2	<b>EXITS REQUIRED:</b> 1 EXIT REQUIRED WHERE OCCUPANT LOAD < 50
<b>CONSTRUCTION TYPE:</b> II-B	<b>ACTUAL EXITS:</b> 1 EXIT FROM LOWER LEVEL 1 EXIT FROM MAIN LEVEL
<b>ALLOWABLE AREA:</b> 23,000 SF / 2 STORIES	<b>DISTANCE TO EXITS:</b> 300 FT W/O SPRINKLER SYSTEM
<b>ACTUAL AREA:</b> LOWER LEVEL 342 SF* MAIN LEVEL 368 SF	<b>COMMON PATH OF EGRESS:</b> 75 FEET
*NOT INCLUDED IN TOTAL ALLOWABLE AREA PER 503.1.1 & 505.1	

VERIFY SCALES  
BAR IS ONE INCH ON ORIGINAL DRAWING.  
0" = 1"  
IF NOT ONE INCH ON THIS DRAWING, ADJUST SCALES ACCORDINGLY.

NO.	DATE	REVISION	BY	CHK.	DESIGNED BY:
0	05/2008	ISSUED FOR BID			SABA
					DRAWN BY: MT/CF
					CHECKED BY: GS
					DATE: APRIL 2008

**Arber**  
Richard P. Arber Associates  
198 Union Boulevard, Suite 200  
Lakewood, Colorado 80228  
Website: www.arber.com  
Phone: 303.831.4700  
Fax: 303.831.0290

**SHORT AND BRENNAN ARCHITECTS**  
1380 27th Street, Suite 9  
Denver, Colorado 80202  
T 303.321.2043  
F 303.321.2040  
www.shortbrennan.com

**INVERNESS WATER AND SANITATION DISTRICT  
INVERNESS LIFT STATION NO. 2**

**FLOOR PLANS**

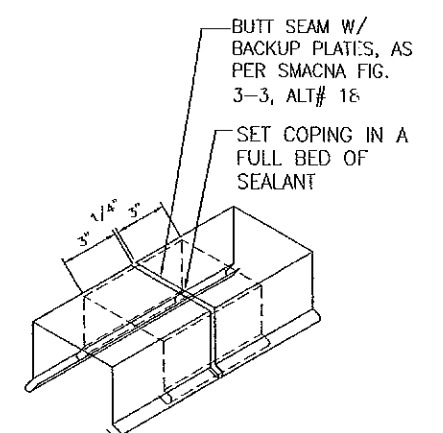
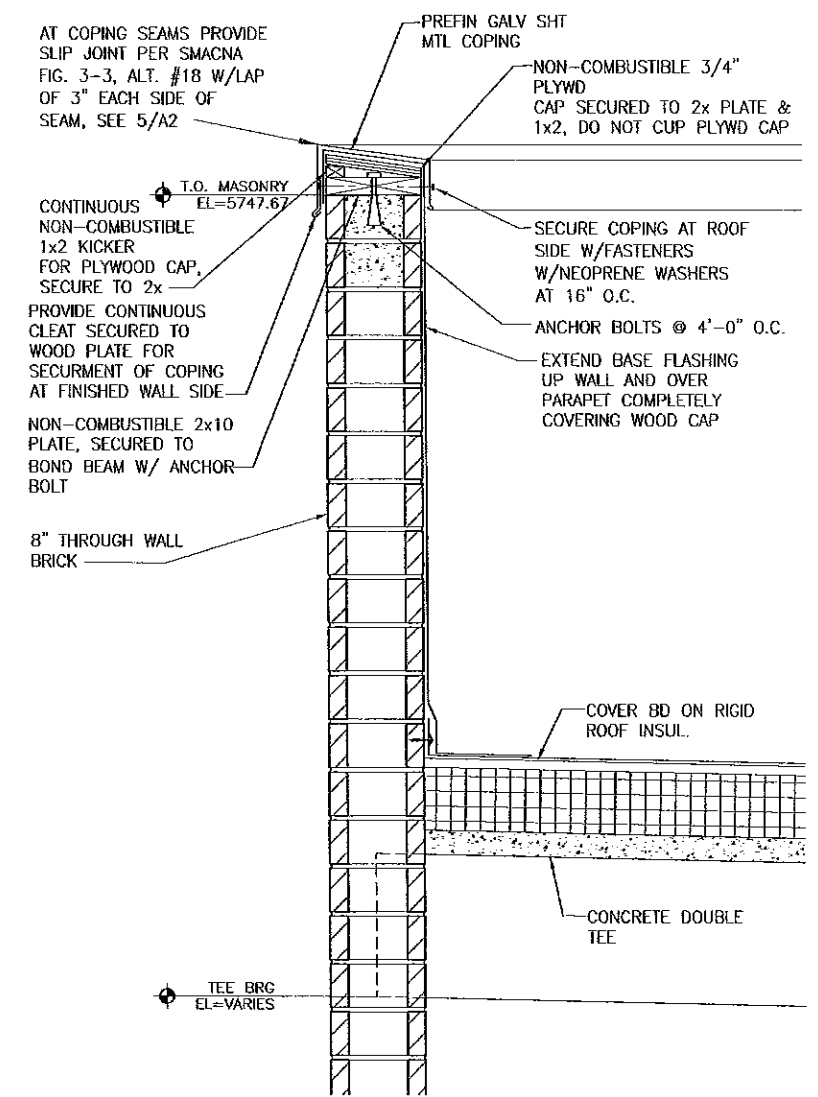
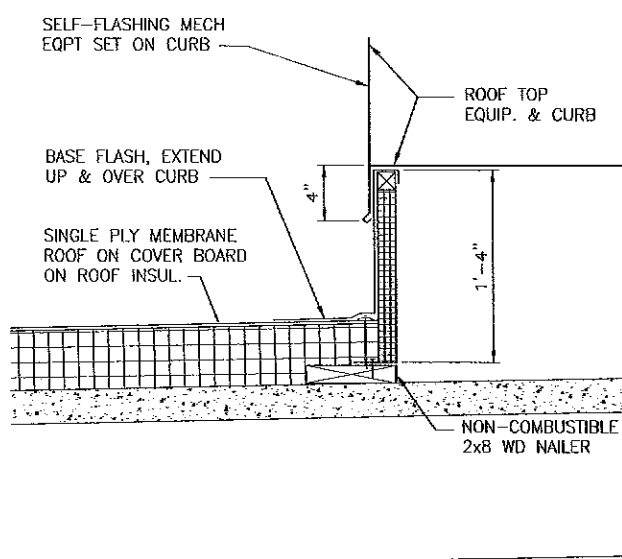
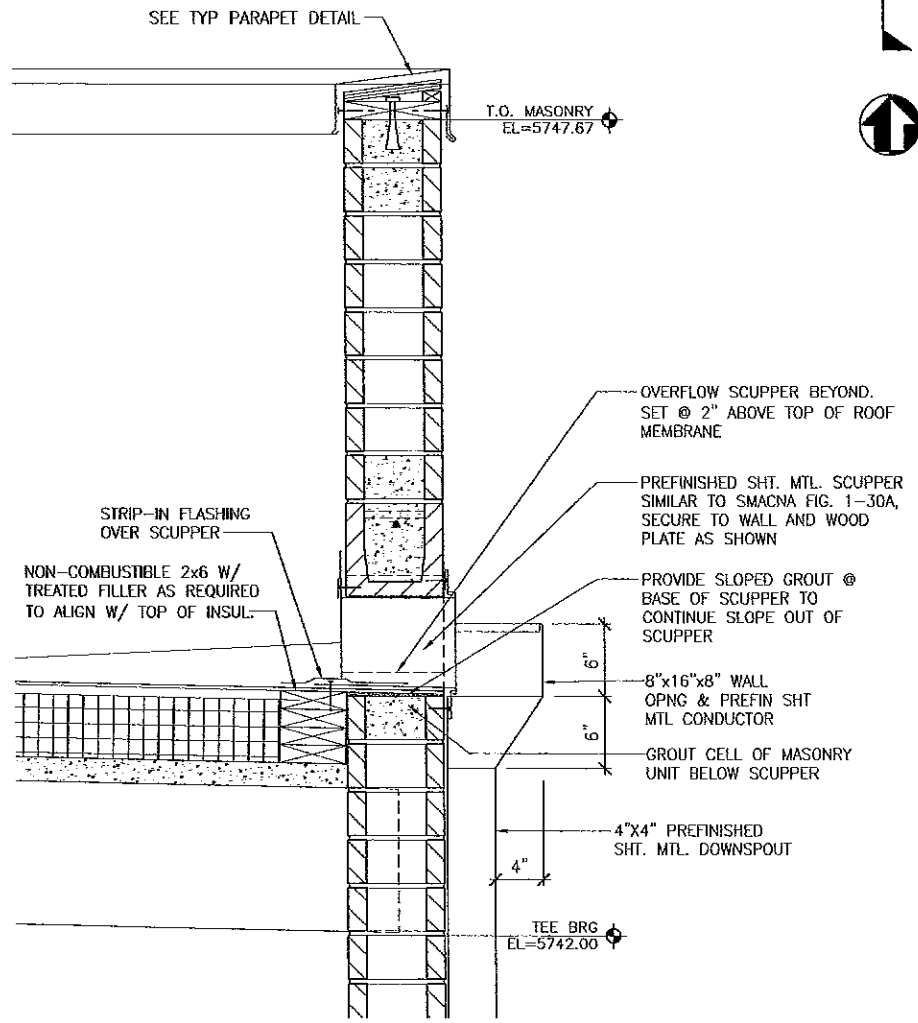
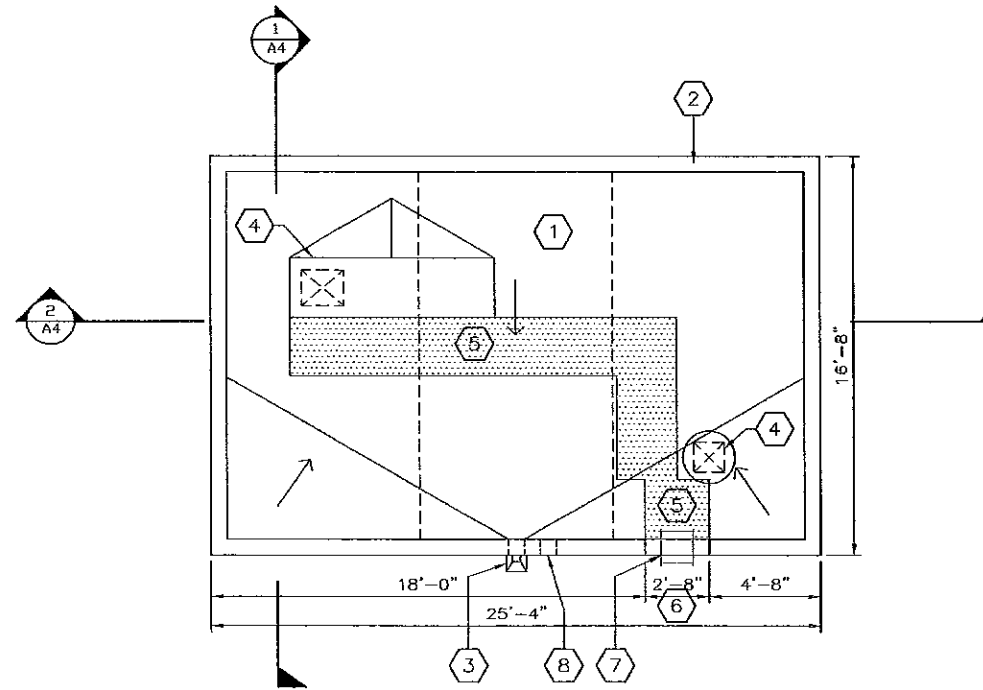
PROJECT NO. INVR18
SHEET NO. <b>A1</b>
11 OF 57 DWG. OF

**GENERAL NOTES**

- COORD W/ PROCESS & MECH DRAWINGS FOR LAYOUTS OF PROCESS, HVAC & OTHER ROOF TOP EQUIPMENT.
- CONFIRM & COORDINATE W/ SIZES OF ALL SUPPLIED ROOFTOP EQUIPMENT TO DETERMINE ACTUAL SIZES & LOCATIONS OF CURBS, SUPPORTS, ETC. PROVIDE MINIMUM 4'-0" CLEARANCE BETWEEN EQUIPMENT OR DUCTS AND PARAPET UNLESS OTHERWISE NOTED.
- PROVIDE 5" BASE RIGID ROOF INSUL + TAPERED NSUL AS REQ'D TO PROVIDE 1/4" PER 1'-0" BACKSLOPE TO ROOF DRAINS.
- INSTALL CRICKET INSUL @ HIGH SIDE OF ALL ROOF TOP EQUIP TO PROVIDE DRAINAGE AROUND HIGH SIDE OF EQUIP.
- COORD EXHAUST FAN LOCATION W/ CRICKET INSULATION TO PREVENT PONDING
- ALL WOOD TO BE NON COMBUSTABLE, FIRE-RETARDANT TREATED.

**KEY NOTES**

- SINGLE PLY MEMBRANE ROOFING ON COVER BOARD OVER BASE + TAPERED INSUL, SEE GENERAL NOTE 3 TYP
- PREFIN GALV SHT MTL COPING, TYP., RE: 5/A2
- ROOF DRAIN SCUPPER, RE: 2/A2
- MECH EQPT ON MFD CURB, RE: 3/A2, COORD. W/ MECH.
- EXTENT OF ROOF WALKWAY PADS, EXTEND TO SERVICE SIDE OF ROOF TOP EQUIP, TYP
- 2'-8" WIDE ACCESS NOTCH IN PARAPET WALL
- ALUM LADDER UP & OVER PARAPET WALL, RE: 3/A5
- OVERFLOW DRAIN SCUPPER, RE: 2/A2, SIM



2 ROOF DRAIN DTL 1" = 1'-0"

3 EQPT ON MFD CURB 1 1/2" = 1'-0"

4 TYP PARAPET DTL 1 1/2" = 1'-0"

5 COPING DTL NTS

NO.	DATE	REVISION	BY	CHK.	DESIGNED BY:	DRAWN BY:	CHECKED BY:	DATE:
0	05/2008	ISSUED FOR BID			SABA	MT/CF	GS	APRIL 2008

VERIFY SCALES  
BAR IS ONE INCH ON ORIGINAL DRAWING.  
0" = 1"  
IF NOT ONE INCH ON THIS DRAWING, ADJUST SCALES ACCORDINGLY.

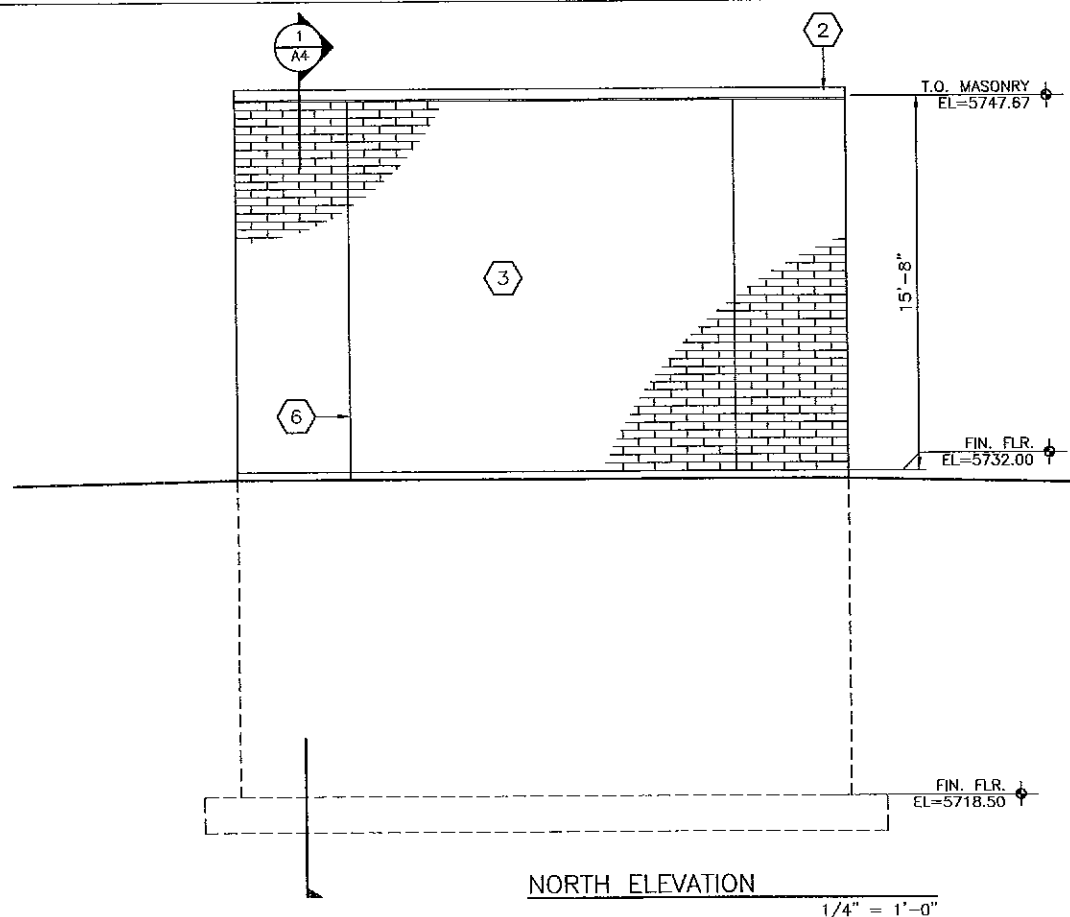
**Arber**  
Richard P. Arber Associates  
198 Union Boulevard, Suite 200  
Lakewood, Colorado 80228  
Website: www.arber.com  
Phone: 303.831.4700  
Fax: 303.831.0290

**SHORT AND BRENNAN ARCHITECTS**  
1320 27th Street, Unit D  
Denver, Colorado 80205  
T: 303.321.2645  
F: 303.321.2650  
www.shortbrennan.com

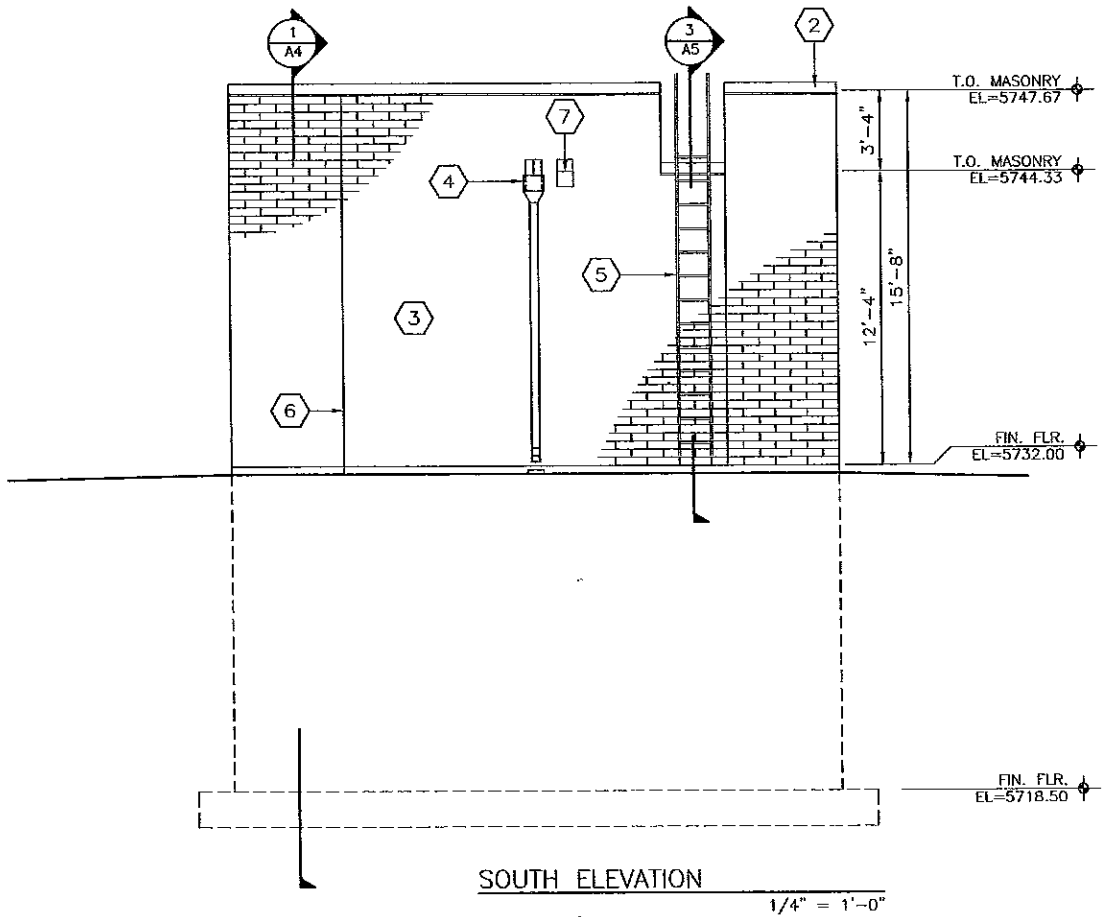
**INVERNESS WATER AND SANITATION DISTRICT  
INVERNESS LIFT STATION NO. 2**

**ROOF PLAN & ROOF DETAILS**

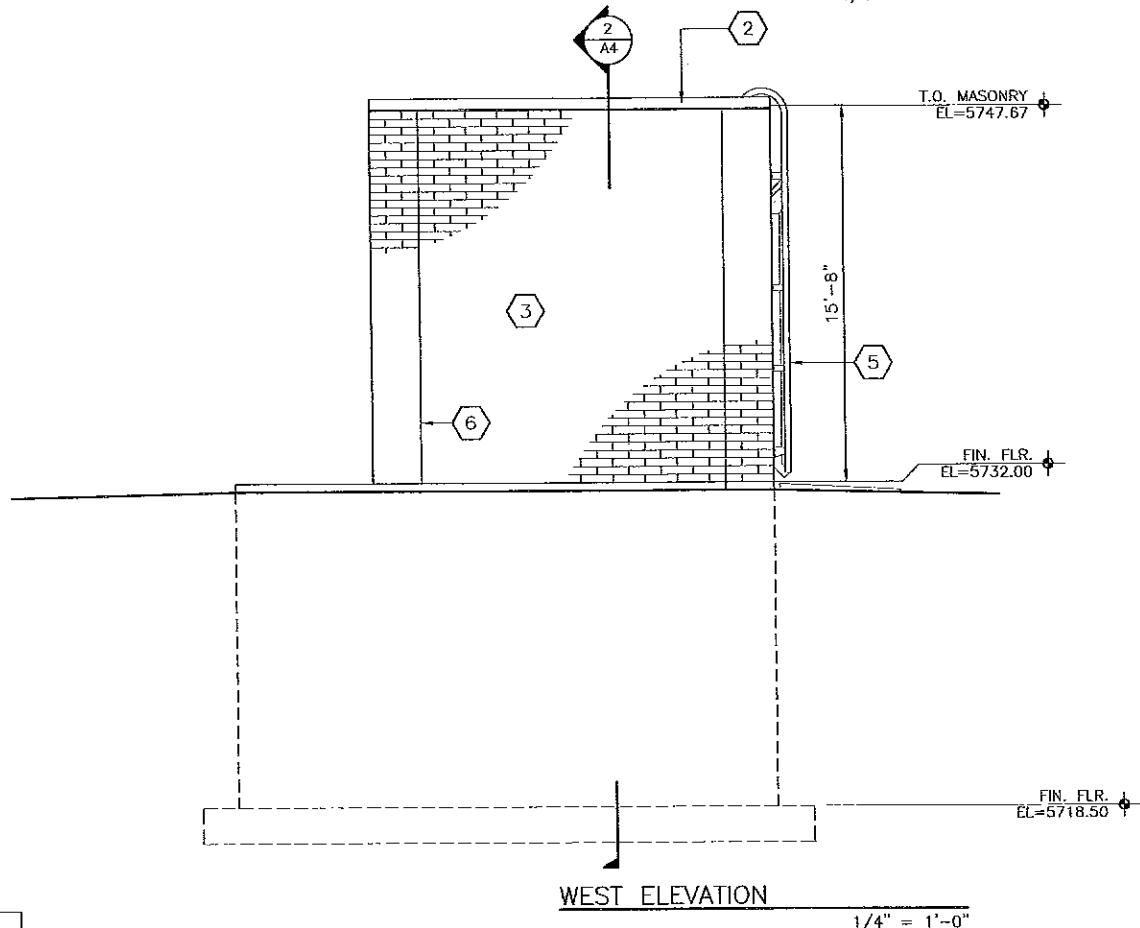
PROJECT NO.	INVR18
SHEET NO.	<b>A2</b>
DWG.	12 OF 57



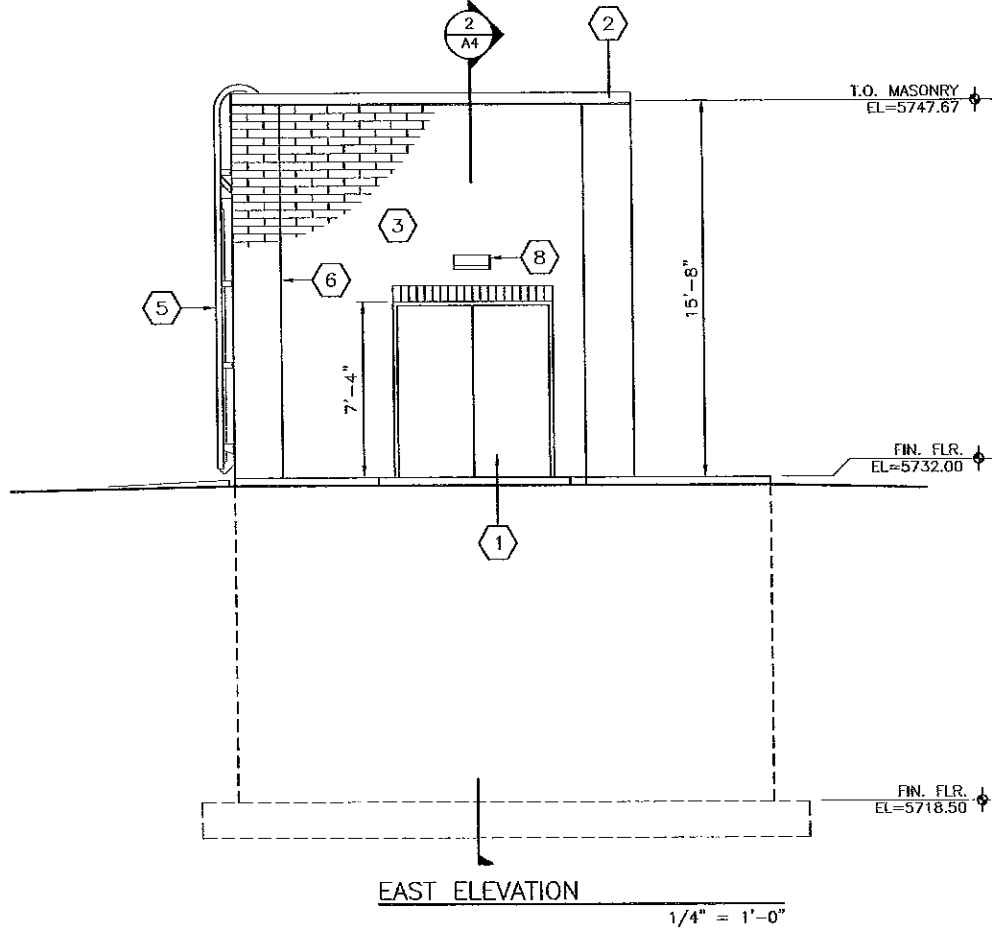
NORTH ELEVATION  
1/4" = 1'-0"



SOUTH ELEVATION  
1/4" = 1'-0"



WEST ELEVATION  
1/4" = 1'-0"



EAST ELEVATION  
1/4" = 1'-0"

**GENERAL NOTES**

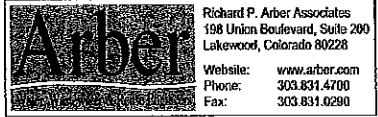
1. DIMENSIONS OF DOORS, WINDOWS & OTHER ITEMS IN WALLS ARE BASED ON NOMINAL MASONRY COURSING OR ROUGH OPENING DIMENSIONS. FIELD VERIFY AND/OR COORDINATE DIMENSIONS OF ITEMS W/MASONRY &/OR FRMG CONSTRUCTION AS REQUIRED.

**KEY NOTES**

- ① HOLLOW METAL DOOR AND FRAME, RE: 1, 2, & 3/A5
- ② PREFIN GALV SHT MTL COPING, TYP., RE: 4/A2
- ③ THROUGH WALL BRICK
- ④ ROOF SCUPPER W/PREFIN. GALV SHEET MTL CONDUCTOR @ DOWNSPOUT, RE: 2/A2
- ⑤ ALUM LADDER, RE: 3/A5
- ⑥ MASONRY CONTROL JT, RE: 3/A1 TYP.
- ⑦ OVERFLOW DRAIN SCUPPER
- ⑧ LIGHT FIXTURE, RE: ELEC

VERIFY SCALES	NO.	DATE	REVISION	BY	CHK.
BAR IS ONE INCH ON ORIGINAL DRAWING. 0" = 1"	0	05/2008	ISSUED FOR BID		
IF NOT ONE INCH ON THIS DRAWING, ADJUST SCALES ACCORDINGLY.					

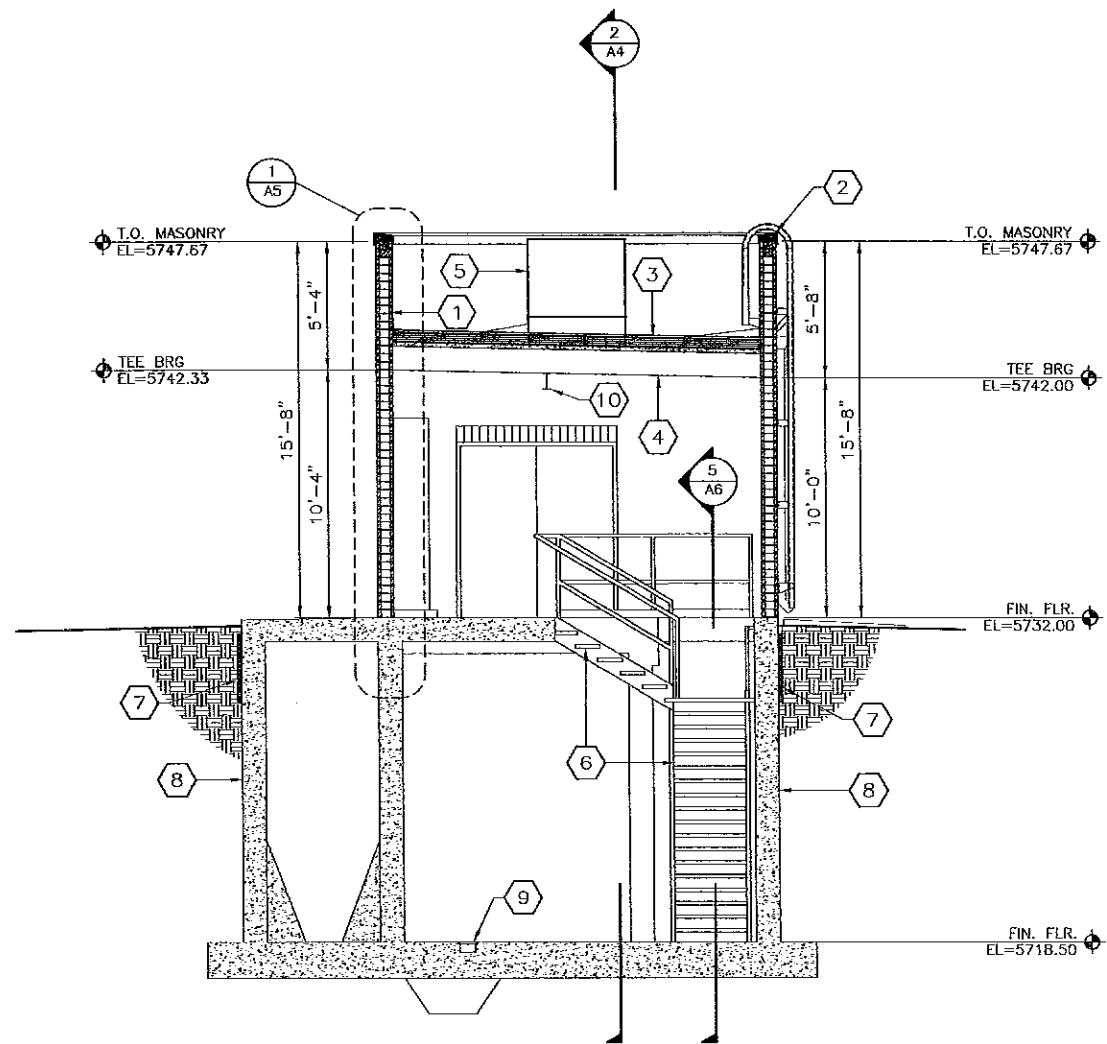
DESIGNED BY: SABA  
DRAWN BY: MT/CP  
CHECKED BY: GS  
DATE: APRIL 2008



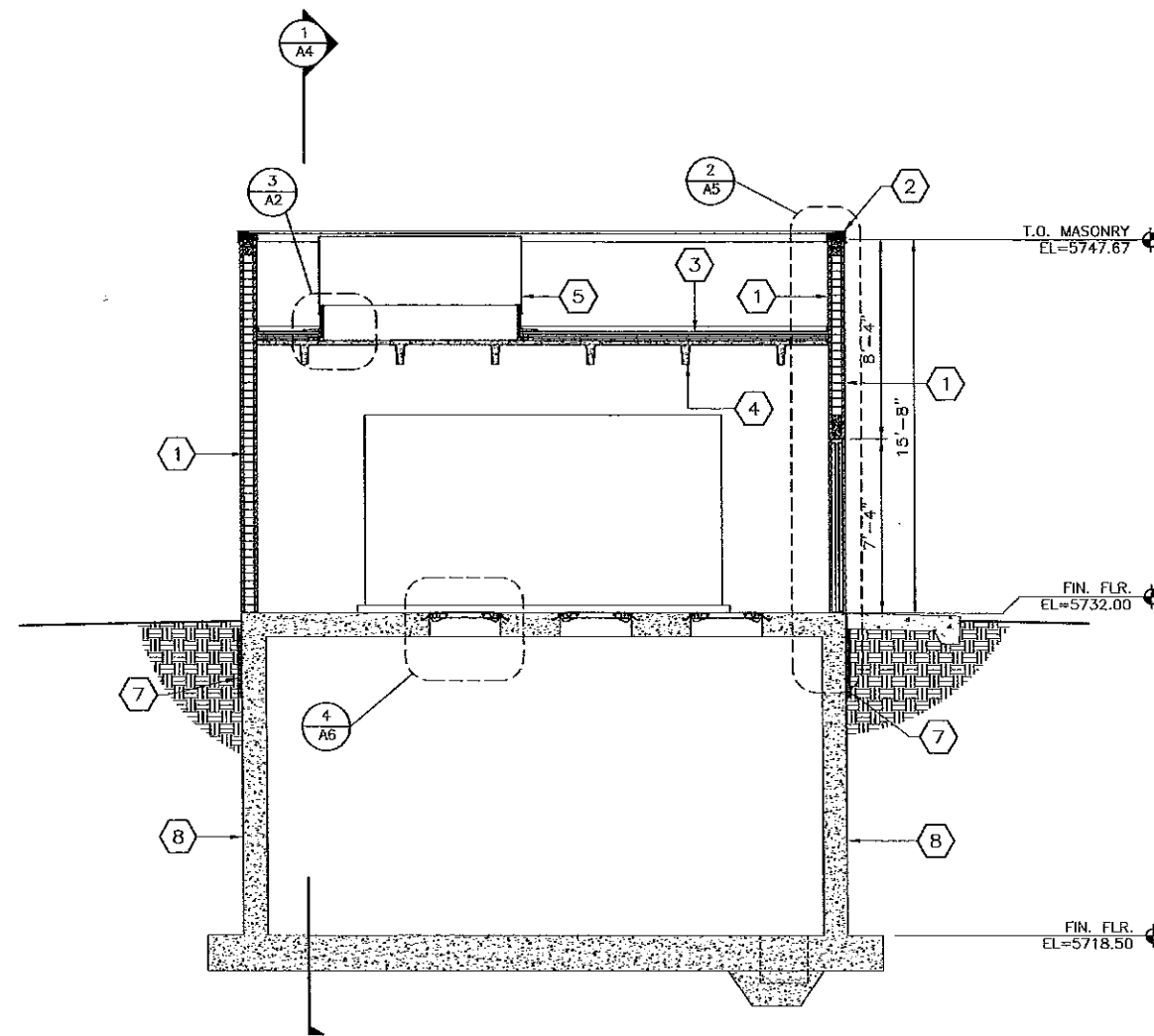
**INVERNESS WATER AND SANITATION DISTRICT  
INVERNESS LIFT STATION NO. 2**

**BUILDING ELEVATIONS**

PROJECT NO. INVR18
SHEET NO. <b>A3</b>
13 OF 57 DWG. OF



1 BUILDING SECTION  
A4 1/4" = 1'-0"



2 BUILDING SECTION  
A4 1/4" = 1'-0"

- KEY NOTES** KEY NOTE REFERENCE NUMBER
- 1 THROUGH WALL BRICK
  - 2 PREFINISHED GALV SHEET METAL COPING, TYP. RE: 4/A2
  - 3 SINGLE PLY MEMBRANE ROOFING ON COVER BOARD & RIGID INSULATION
  - 4 PRECAST CONC DOUBLE TEES
  - 5 MECHANICAL EQPT ON MFD CURB, RE: 3/A2, COORD. W/ MECH.
  - 6 GALV STL STAIRS & RAILING, RE: STRUCT & 5/A6
  - 7 PERIMETER INSULATION
  - 8 DAMPPROOFING ON CONC. WALL
  - 9 TRENCH DRAIN W/ GALV STL GRATING, RE: STRUCT
  - 10 MONORAIL

- GENERAL NOTES**
1. COORD W/ PROCESS DRAWINGS FOR LAYOUTS OF PROCESS EQUIPMENTS, PLATFORMS, CURBS, AND PADS.
  2. DIMENSIONS OF DOORS, WINDOWS & OTHER ITEMS IN WALLS ARE BASED ON NOMINAL MASONRY COURSING OR ROUGH OPENING DIMENSIONS. FIELD VERIFY AND/OR COORDINATE DIMENSIONS OF ITEMS W/MASONRY &/OR FRMG CONSTRUCTION AS REQUIRED.

NO.	DATE	REVISION	BY	CHK.
0	05/2008	ISSUED FOR BID		

VERIFY SCALES  
BAR IS ONE INCH ON ORIGINAL DRAWING.  
0" = 1"  
IF NOT ONE INCH ON THIS DRAWING, ADJUST SCALES ACCORDINGLY.

DESIGNED BY: SABA  
DRAWN BY: MT/CF  
CHECKED BY: GS  
DATE: APRIL 2008

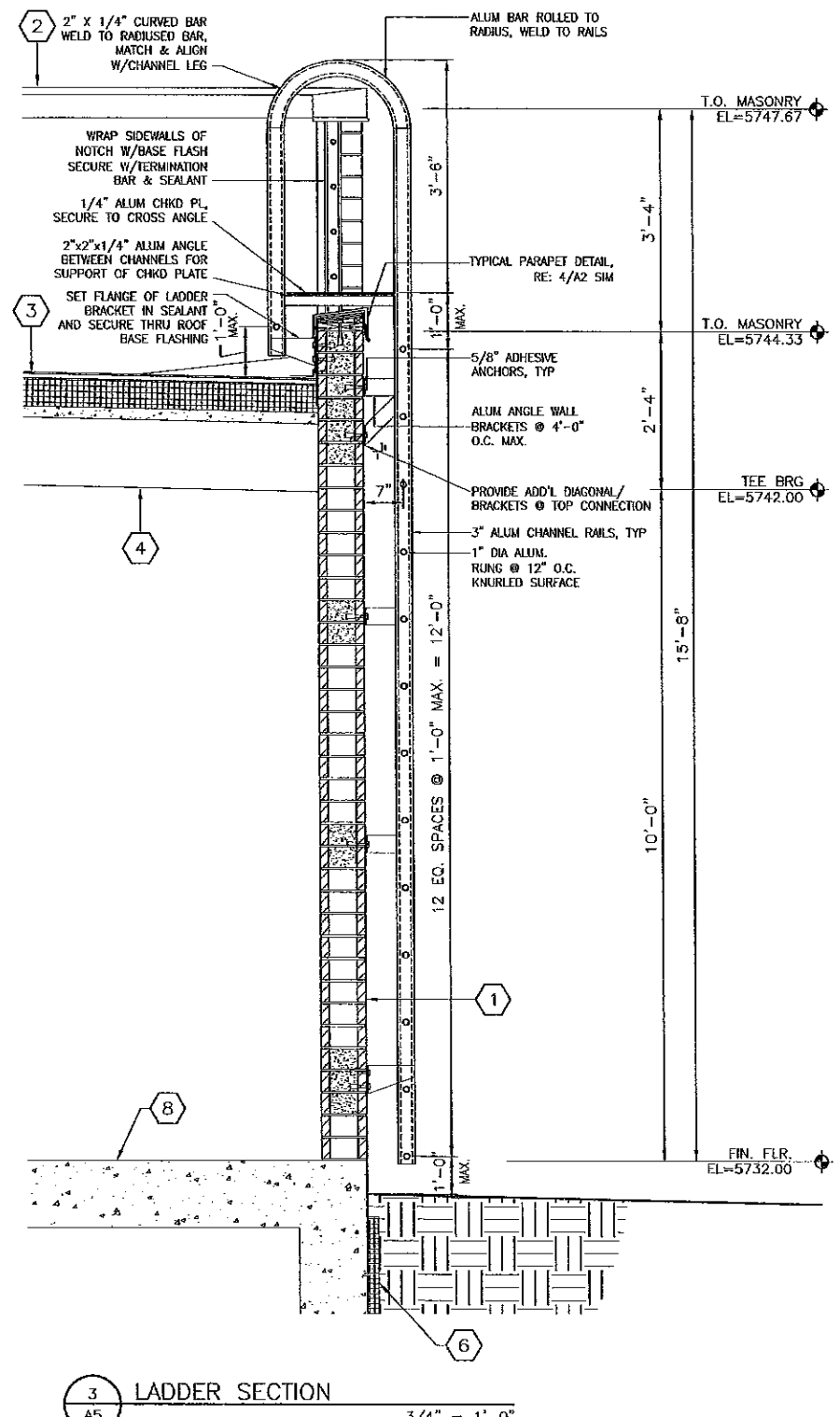
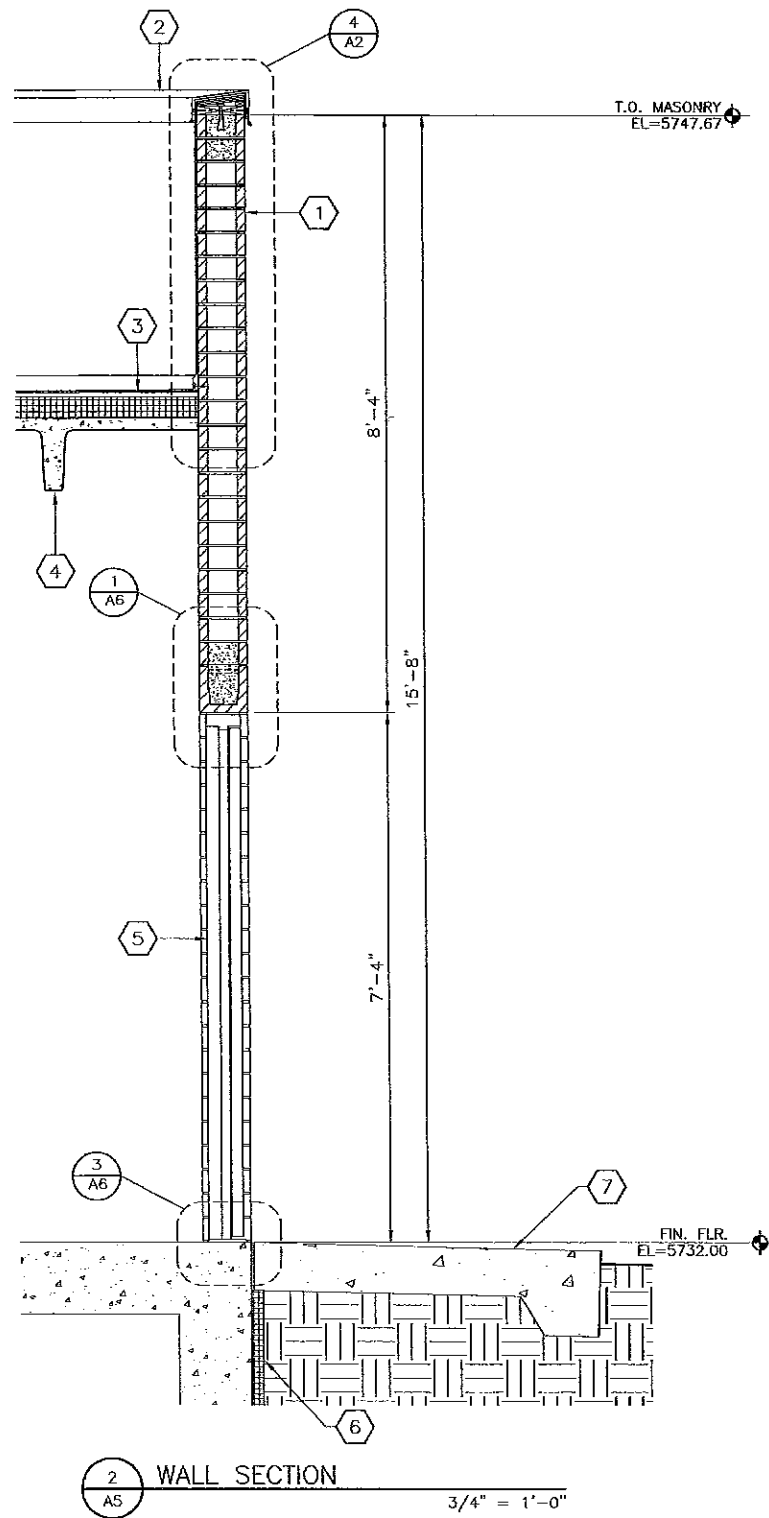
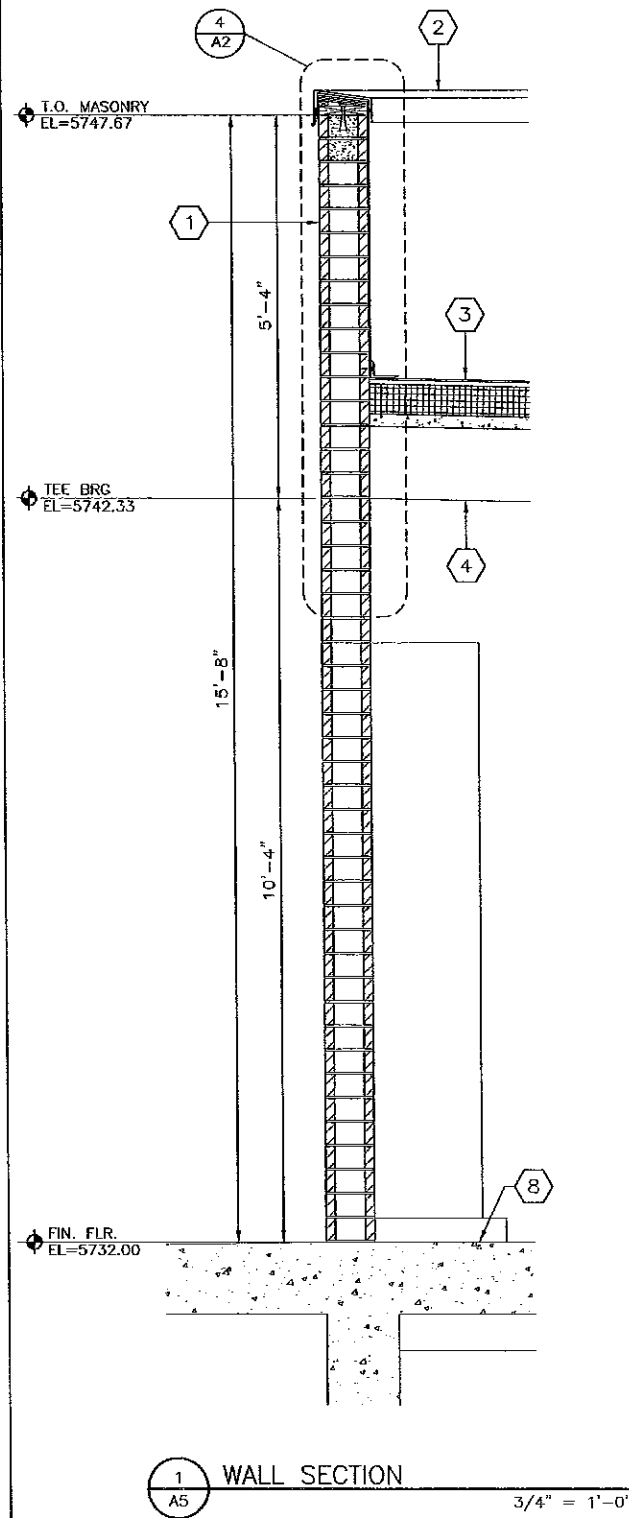
**Aiber**  
Richard P. Aiber Associates  
198 Union Boulevard, Suite 200  
Lakewood, Colorado 80228  
Website: www.aiber.com  
Phone: 303.631.4700  
Fax: 303.631.0290

**S** SHORT AND BRENNAN ARCHITECTS  
1380 27th Street, Unit D  
Denver, Colorado 80202  
T 303.521.2048  
F 303.521.2080  
www.shortandbrennan.com

**INVERNESS WATER AND SANITATION DISTRICT  
INVERNESS LIFT STATION NO. 2**

**BUILDING SECTIONS**

PROJECT NO. INVR18  
SHEET NO. **A4**  
14 DWG. 57 OF



- KEY NOTES**
- KEY NOTE REFERENCE NUMBER
- 1 THROUGH WALL BRICK
  - 2 PREFINISHED GALV SHEET METAL COPING, TYP. RE: 5/A2
  - 3 SINGLE PLY MEMBRANE ROOFING ON COVER BOARD & RIGID INSULATION
  - 4 PRECAST CONC DOUBLE TEES
  - 5 HOLLOW METAL DOOR & FRAME, RE: 1,2&3/A6
  - 6 PERIMETER INSULATION
  - 7 CONCRETE APRON
  - 8 CONCRETE SLAB

VERIFY SCALES	NO.	DATE	REVISION	BY	CHK.	DESIGNED BY:
BAR IS ONE INCH ON ORIGINAL DRAWING.	0	05/2008	ISSUED FOR BID			SABA
IF NOT ONE INCH ON THIS DRAWING, ADJUST SCALES ACCORDINGLY.						

DRAWN BY:	MT/CP
CHECKED BY:	GS
DATE:	APRIL 2008

**Arber**  
Richard P. Arber Associates  
198 Union Boulevard, Suite 200  
Lakewood, Colorado 80228  
Website: www.arber.com  
Phone: 303.631.4700  
Fax: 303.631.0290

**SHORT AND BRENNAN ARCHITECTS**  
1820 27th Street, Suite D  
Denver, Colorado 80202  
T: 303.961.2043  
F: 303.961.6993  
www.shortbrannan.com

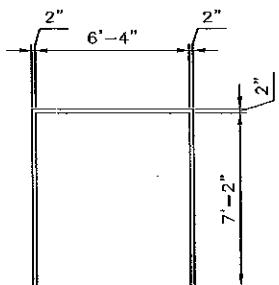
**INVERNESS WATER AND SANITATION DISTRICT  
INVERNESS LIFT STATION NO. 2**

**WALL SECTIONS**

PROJECT NO.	INVR18
SHEET NO.	A5
DWG.	15 OF 57

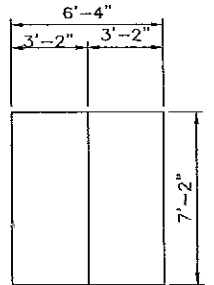
DOOR SCHEDULE NOTES: 1. ALL DETAILS ARE REFERENCED TO THIS SHEET UNLESS NOTED OTHERWISE

DOOR SCHEDULE												DOOR DESIGNATION DOOR NUMBER			
DOOR NO.	TYPE	DIMENSIONS			MATERIAL	FINISH	HWRE GROUP	TYPE	FRAMES			REMARKS	DOOR NO.		
		W	H	TH					HEAD	JAMB	SILL			MATERIAL	FINISH
LIFT STATION															
1	A	6'-4"	7'-2"	1 3/4"	HOLLOW METAL	PAINT	1	1	1	2	3	HOLLOW METAL	PAINT	-	1



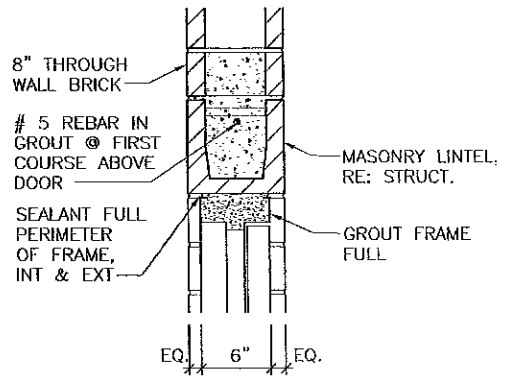
FRAME '1'

FRAME ELEVATION  
1/4" = 1'-0"

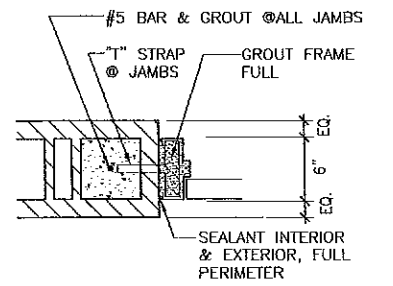


DOOR 'A'

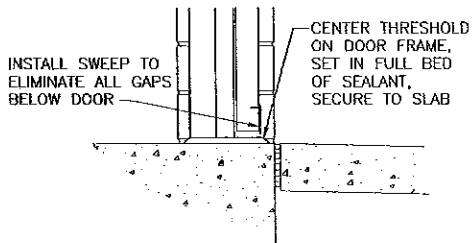
DOOR ELEVATION  
1/4" = 1'-0"



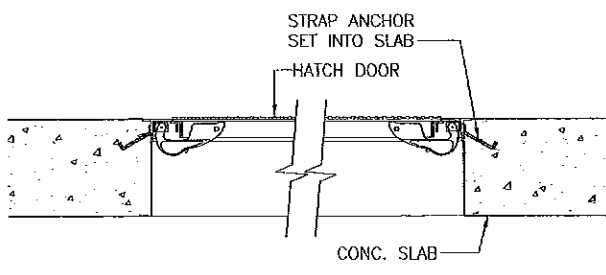
1 DOOR HEAD DETAIL  
A6 1 1/2" = 1'-0"



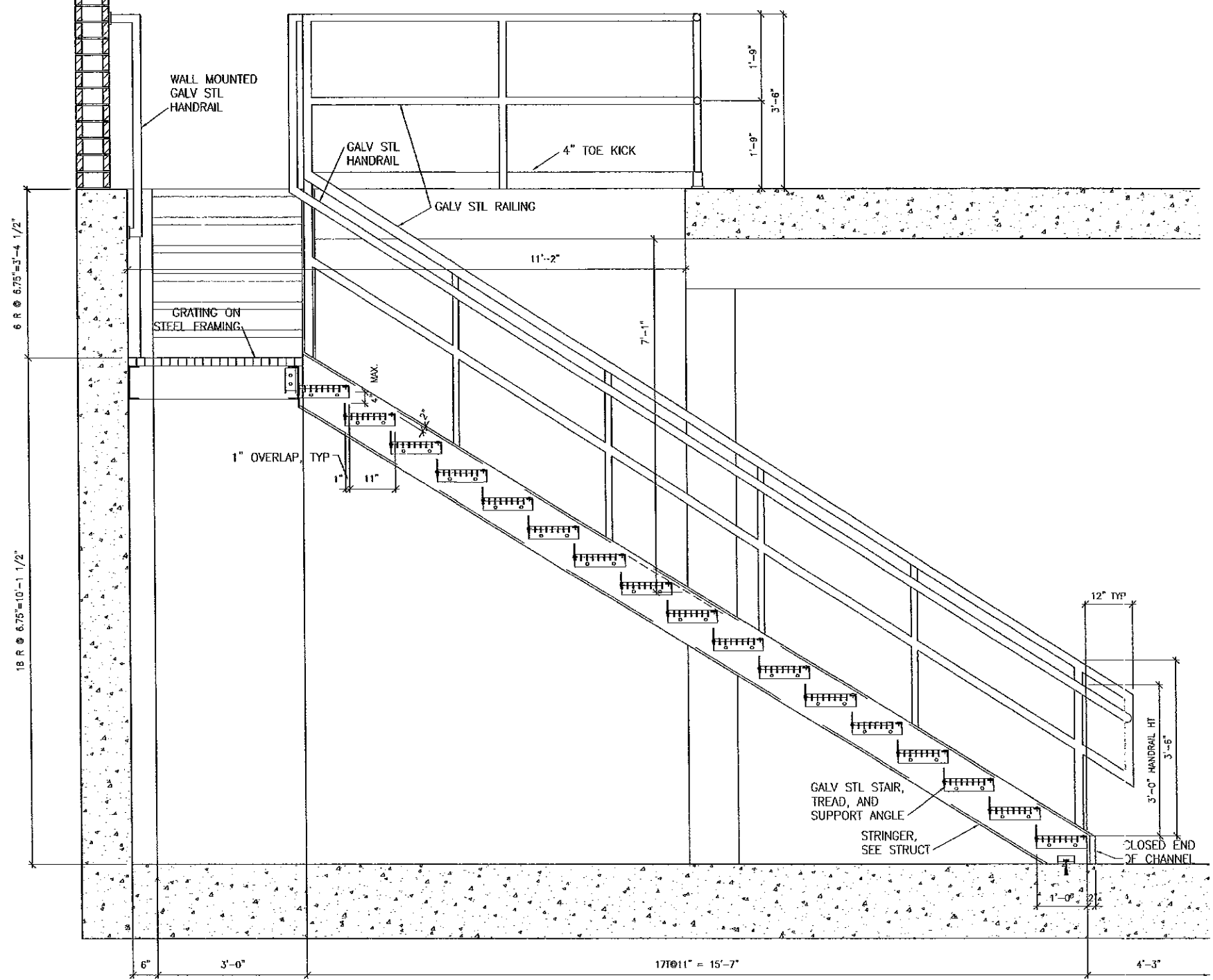
2 DOOR JAMB DETAIL  
A6 1 1/2" = 1'-0"



3 DOOR THRESHOLD DETAIL  
A6 1 1/2" = 1'-0"



4 FLOOR HATCH DETAIL  
A6 1" = 1'-0"



5 STAIR AND RAILING SECTION  
A6 3/4" = 1'-0"

NO.	DATE	REVISION	BY	CHK.	DESIGNED BY:
0	05/2008	ISSUED FOR BID			SABA
					DRAWN BY: MT/CF
					CHECKED BY: GS
					DATE: APRIL 2008

Richard P. Arber Associates  
198 Union Boulevard, Suite 200  
Lakewood, Colorado 80228  
Website: www.arber.com  
Phone: 303.831.4700  
Fax: 303.831.0290

SHORT AND BRENNAN ARCHITECTS  
1320 27th Street, Unit D  
Denver, Colorado 80202  
T: 303.321.2048  
F: 303.321.2000  
www.shortbrennan.com

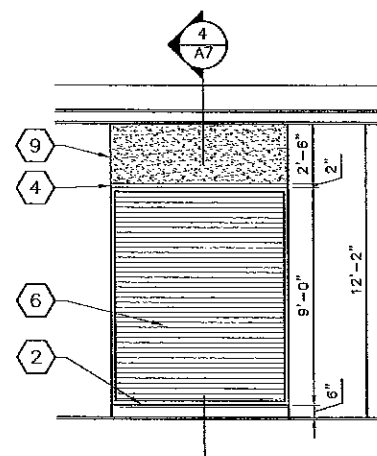
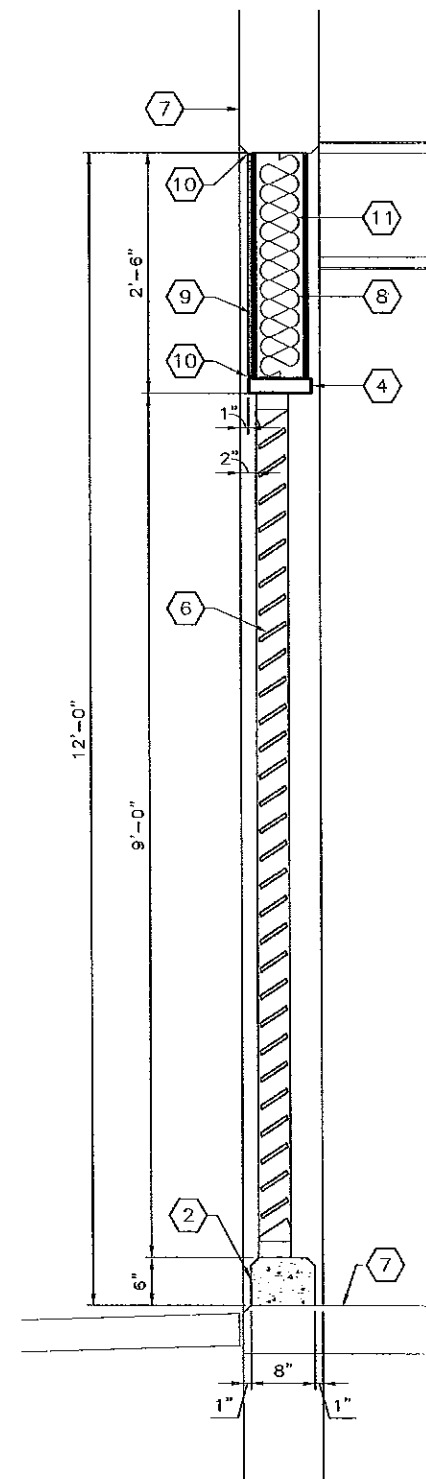
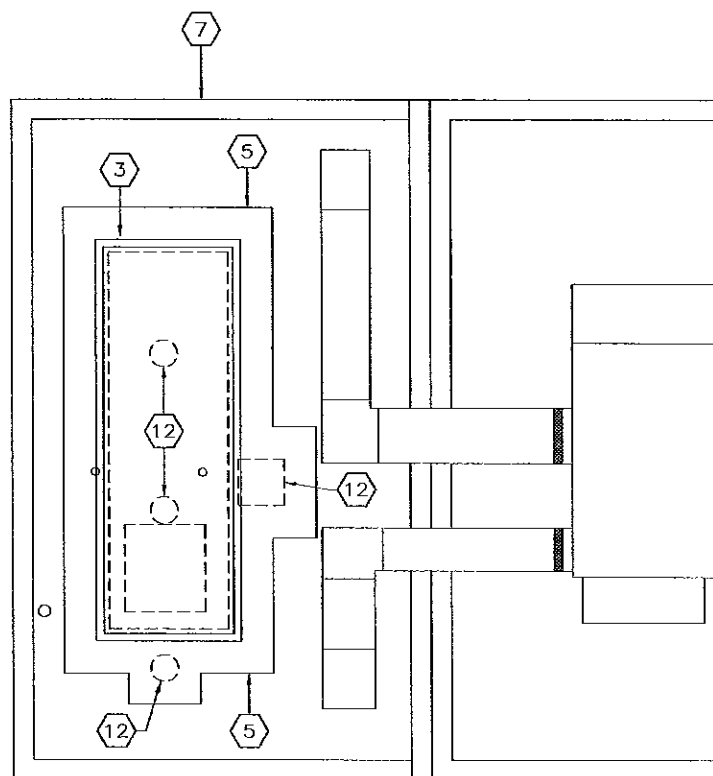
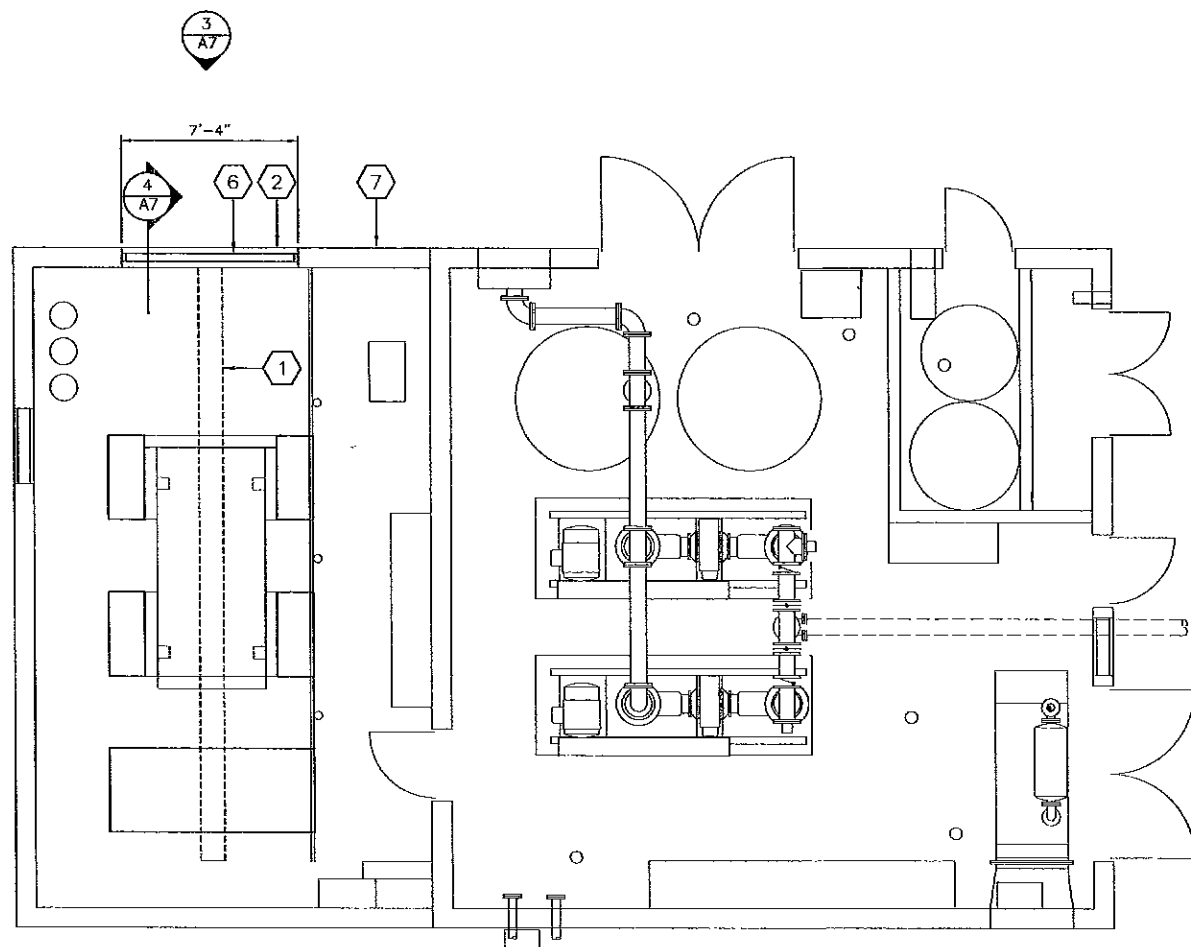
**INVERNESS WATER AND SANITATION DISTRICT  
INVERNESS LIFT STATION NO. 2**

**GENERAL NOTES**

- COORD W/ PROCESS DRAWINGS FOR LAYOUTS OF PROCESS EQUIPMENTS, PLATFORMS, CURBS, AND PADS.
- DIMENSIONS OF DOORS, WINDOWS & OTHER ITEMS IN WALLS ARE BASED ON ROUGH OPENING DIMENSIONS. FIELD VERIFY AND/OR COORDINATE DIMENSIONS OF ITEMS W/ FRMG CONSTRUCTION AS REQUIRED.
- CAREFULLY SAWCUT AND ISOLATE ALL PORTIONS OF EXISTING CONSTRUCTION TO BE REMOVED.
- REPAIR, PATCH, REFINISH, OR REPLACE EXISTING CONSTRUCTION DAMAGED BY DEMOLITION AND CONSTRUCTION ACTIVITIES, INCLUDING THE REMOVAL OF MATERIAL DURING CONSTRUCTION. RESTORE TO EQUAL OR BETTER THAN PREVIOUS EXISTING CONDITION.
- ALL WOOD TO BE NON-COMBUSTIBLE, FIRE-RETARDANT TREATED.

**KEY NOTES**

- KEY NOTE REFERENCE NUMBER
- DEMO MONORAIL CANTILEVER, RE: STRUCT.
  - 6" HIGH CONC. CURB, W/ 3/4" CHAMFER, TYP. RE: STRUCT.
  - MECH EQPT ON MFD CURB, RE: 3/A2 SIM. COORD W/ MECH
  - HSS 8" X 2" X 3/16", PAINT, RE: STRUCT
  - EXTENT OF ROOF PATCH & REPAIR
  - ALUM LOUVER IN EXISTING OPENING
  - EXIST CONST TO REMAIN
  - 6" METAL STUD FRAMING, RE: STRUCT
  - 1/2" NON COMBUSTIBLE PLYWD SHTG BOTH SIDES WITH MTL STUD FRAMING WITH 1/2" CEMENT BOARD ON BLDG PAPER @ EXT, PROVIDE 3/8" MINERIT HD BY AMERICAN FIBER CEMENT OR EQUAL
  - SEALANT, FULL PERIM
  - FULL BATT INSUL
  - DEMO EXIST MECH EQPT & CURBS, RE: PROCESS



**1**  
A7 FLOOR PLAN  
1/4" = 1'-0"

**2**  
A7 PARTIAL ROOF PLAN  
1/4" = 1'-0"

**3**  
A7 ELEVATION  
1/4" = 1'-0"

**4**  
A7 WALL SECTION  
1" = 1'-0"

**CODE ANALYSIS SUMMARY**

**BUILDING CODES:**  
 2006 INTERNATIONAL BUILDING CODE  
 2006 INTERNATIONAL MECHANICAL CODE  
 2006 INTERNATIONAL FUEL GAS CODE  
 2006 INTERNATIONAL PLUMBING CODE  
 2005 NATIONAL ELECTRICAL CODE

**NUMBER OF OCCUPANTS:**  
 MAIN LEVEL 1,173 SF @ 300 SF/OCC = 4 OCC

**EXITS REQUIRED:**  
 1 EXIT REQUIRED WHERE OCCUPANT LOAD < 50

**ACTUAL EXITS:**  
 2 EXITS FROM MAIN LEVEL

**DISTANCE TO EXITS:** 300 FT W/O SPRINKLER SYSTEM

**COMMON PATH OF EGRESS:** 75 FT

**EXIT THROUGH INTERVENING SPACES:** NOT PROHIBITED IN GROUP F OCC WHEN THE ADJOINING ROOM IS THE SAME OR LESSER HAZARD OCCUPANCY GROUP (1014.2)

**OCCUPANCY GROUP:** F-2

**CONSTRUCTION TYPE:** II-B

**ALLOWABLE AREA:** 23,000 SF / 2 STORIES

**ACTUAL AREA: MAIN LEVEL** 1,173 SF

VERIFY SCALES	NO.	DATE	REVISION	BY	CHK.	DESIGNED BY:
BAR IS ONE INCH ON ORIGINAL DRAWING.	0	05/2008	ISSUED FOR BID			SABA
IF NOT ONE INCH ON THIS DRAWING, ADJUST SCALES ACCORDINGLY.						MT/CF
						GS
						DATE: APRIL, 2008

**Arber**  
 Richard P. Arber Associates  
 198 Union Boulevard, Suite 200  
 Lakewood, Colorado 80228  
 Website: www.arber.com  
 Phone: 303.831.4700  
 Fax: 303.831.0290

**S** SHORT AND BRENNAN ARCHITECTS  
 1520 27th Street, Unit B  
 Denver, Colorado 80202  
 T: 303.351.2043  
 F: 303.351.2080  
 www.shortandbrennan.com

**INVERNESS WATER AND SANITATION DISTRICT  
 INVERNESS LIFT STATION NO. 2**

**BLOWER BUILDING**

PROJECT NO. INVR18  
 SHEET NO. **A7**  
 17 OF 57 DWG.