

CIVIL LEGEND

— PL —	PROPERTY LINE	SSCO	SANITARY SEWER CLEANOUT		BUSH
	EXISTING PAVEMENT	SSMH	SANITARY SEWER MANHOLE		TREE
	CONCRETE WALK		DRAIN INLET		TREE LINE
	ROCK	MH	MANHOLE OR METER VAULT	— E/M —	EASEMENT
	PAVEMENT	— x x x x —	FENCE	— — — — —	TOP OF CURB
	PROPERTY CORNER MARKER	— — — — —	EDGE OF CONCRETE	— — — — —	FLOW LINE
PP	POWER POLE	— — — — —	EDGE OF ASPHALT	— — — — —	SIDEWALK
	FIRE HYDRANT	— — — — —	CENTERLINE	— — — — —	EXISTING ITEMS
YH	YARD HYDRANT	— — — — —	EXISTING WATER	— — — — —	NEW ITEMS
	GAS METER	— — — — —	EXISTING SANITARY SEWER	— — — — —	
GR	GAS RISER	— — — — —	EXISTING UNDERGROUND TELEPHONE	— — — — —	
	LIGHT POLE	— — — — —	EXISTING UNDERGROUND ELECTRIC	— — — — —	
TP	TELEPHONE POLE	— — — — —	EXISTING OVERHEAD ELECTRIC	— — — — —	
	WATER SPIGOT	— — — — —	EXISTING NATURAL GAS	— — — — —	
	WATER VALVE	— — — — —	EXISTING DIESEL FUEL	— — — — —	
	WATER METER	— NG —	NATURAL GAS	x 3.0	SPOT ELEVATION
	ELEC METER	— XXX —	CONTOUR	— — — — —	EXISTING CONTOUR

NOTE:
 1. THIS IS A STANDARD LEGEND SHEET. THEREFORE, SOME SYMBOLS OR ABBREVIATIONS APPEARING ON THIS SHEET MAY NOT BE USED.

5/5/08 14:07 C:\PT\PROJECTS\INVERNESS\DWG\CIVIL LEGEND.DWG XREFS: P:\INVERNESS\INVERNESS\DWG\CIVIL\BASE\LEGEND.DWG



VERIFY SCALES	NO.	DATE	REVISION	BY	CHK.	DESIGNED BY:
BAR IS ONE INCH ON ORIGINAL DRAWING. 0" — 1"	0	05/2008	ISSUED FOR BID			RAF
IF NOT ONE INCH ON THIS DRAWING, ADJUST SCALES ACCORDINGLY.						CWC
						DATE: APRIL 2008

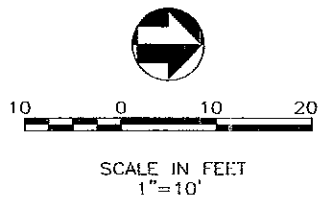
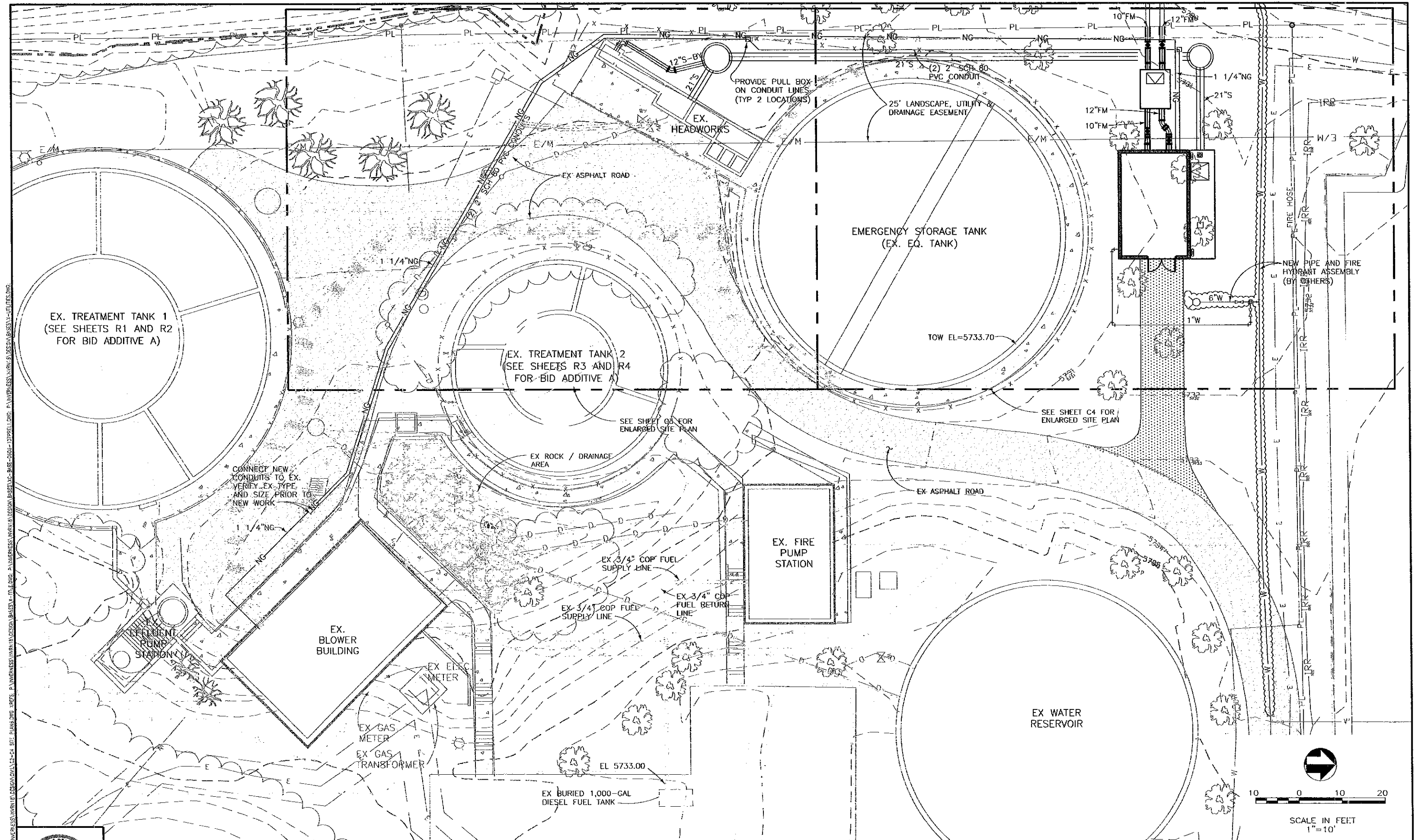
Arber
 Water, Wastewater & Reuse Engineers

Richard P. Arber Associates
 188 Union Boulevard, Suite 200
 Lakewood, Colorado 80226
 Website: www.arber.com
 Phone: 303.831.4700
 Fax: 303.831.0290

**INVERNESS WATER AND SANITATION DISTRICT
 INVERNESS LIFT STATION NO. 2**

CIVIL LEGEND

PROJECT NO. INVR18
SHEET NO. C1
6 OF 57 DWG. OF



5/16/08 14:57 CRT: R17 P.1 INVERNESS WATER AND SANITATION DISTRICT LIFT STATION NO. 2 - CIVIL - 137991.DWG: P:\INVERNESS\WORKING\DESIGN\DESIGN\BASE\08-0508-137991.DWG: P:\INVERNESS\WORKING\DESIGN\DESIGN\BASE\08-0508-137991.DWG



NO.	DATE	REVISION	BY	CHK.	DESIGNED BY:
0	05/2008	ISSUED FOR BID			RAP

VERIFY SCALES
 BAR IS ONE INCH ON ORIGINAL DRAWING.
 0" = 1"
 IF NOT ONE INCH ON THIS DRAWING, ADJUST SCALES ACCORDINGLY.

DRAWN BY: CWC
 CHECKED BY:
 DATE: APRIL 2008

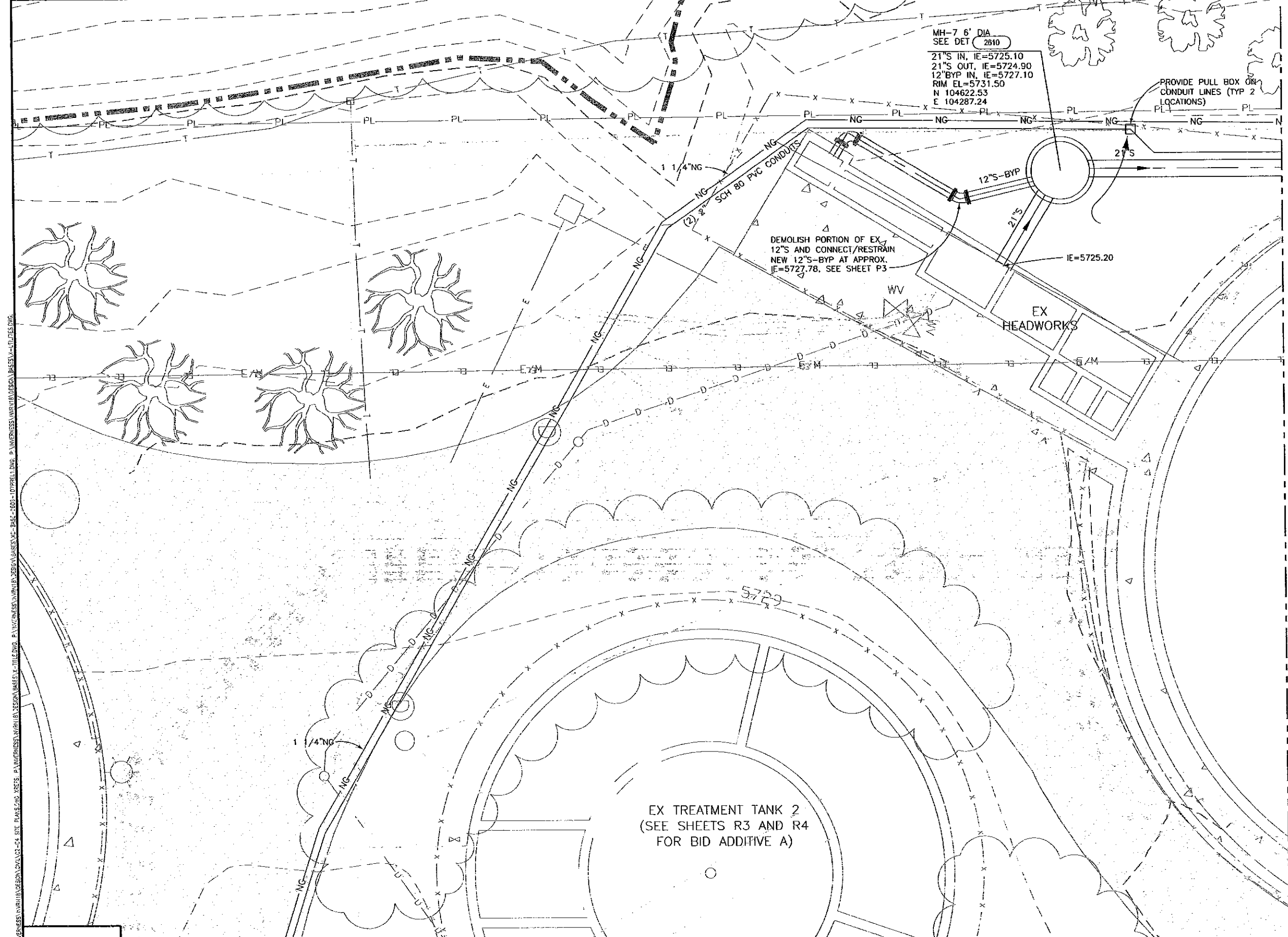
Arber
 Water, Wastewater & Reuse Engineers

Richard P. Arber Associates
 198 Union Boulevard, Suite 200
 Lakewood, Colorado 80228
 Website: www.arber.com
 Phone: 303.831.4700
 Fax: 303.831.0290

**INVERNESS WATER AND SANITATION DISTRICT
 INVERNESS LIFT STATION NO. 2**

SITE IMPROVEMENTS AND YARD PIPING PLAN

PROJECT NO.	INVR18
SHEET NO.	C2
7 OF 57	DWG. OF



MH-7 6' DIA
 SEE DET 2810
 21" S IN, IE=5725.10
 21" S OUT, IE=5724.90
 12" BYP IN, IE=5727.10
 RIM EL=5731.50
 N 104622.53
 E 104287.24

PROVIDE PULL BOX ON
 CONDUIT LINES (TYP 2
 LOCATIONS)

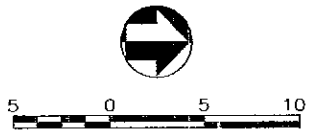
DEMOLISH PORTION OF EX
 12" S AND CONNECT/RESTRAIN
 NEW 12" S-BYP AT APPROX.
 IE=5727.78. SEE SHEET P3

EX
 HEADWORKS

EX TREATMENT TANK 2
 (SEE SHEETS R3 AND R4
 FOR BID ADDITIVE A)

MATCHLINE. SEE SHEET C4

NOTE:
 1. REMOVE AND REPLACE EX FENCE AND
 CONC WALK AS REQUIRED FOR NEW
 WORK. MATCH EXISTING.



SCALE IN FEET
 1"=5'



VERIFY SCALES
 BAR IS ONE INCH ON
 ORIGINAL DRAWING.
 0" = 1"
 IF NOT ONE INCH ON
 THIS DRAWING, ADJUST
 SCALES ACCORDINGLY.

NO.	DATE	REVISION	BY	CHK.
0	05/2008	ISSUED FOR BID		

DESIGNED BY: **RAP**
 DRAWN BY: **CWC**
 CHECKED BY:
 DATE: **APRIL 2008**

Arber
 Water, Wastewater & Reuse Engineers

Richard P. Arber Associates
 198 Union Boulevard, Suite 200
 Lakewood, Colorado 80228
 Website: www.arber.com
 Phone: 303.831.4700
 Fax: 303.831.0280

**INVERNESS WATER AND
 SANITATION DISTRICT
 INVERNESS LIFT STATION NO. 2**

**ENLARGED SITE
 IMPROVEMENTS AND
 YARD PIPING PLAN**

PROJECT NO. INVR18
SHEET NO. C3
8 OF 57 DWG.

5/6/08 14:57 DWG: P:\INVERNESS\INVERNESS\DESIGN\BASIS\DESIGN\BASIS\UTILITIES.DWG; P:\INVERNESS\INVERNESS\DESIGN\BASIS\DESIGN\BASIS\UTILITIES.DWG; P:\INVERNESS\INVERNESS\DESIGN\BASIS\DESIGN\BASIS\UTILITIES.DWG

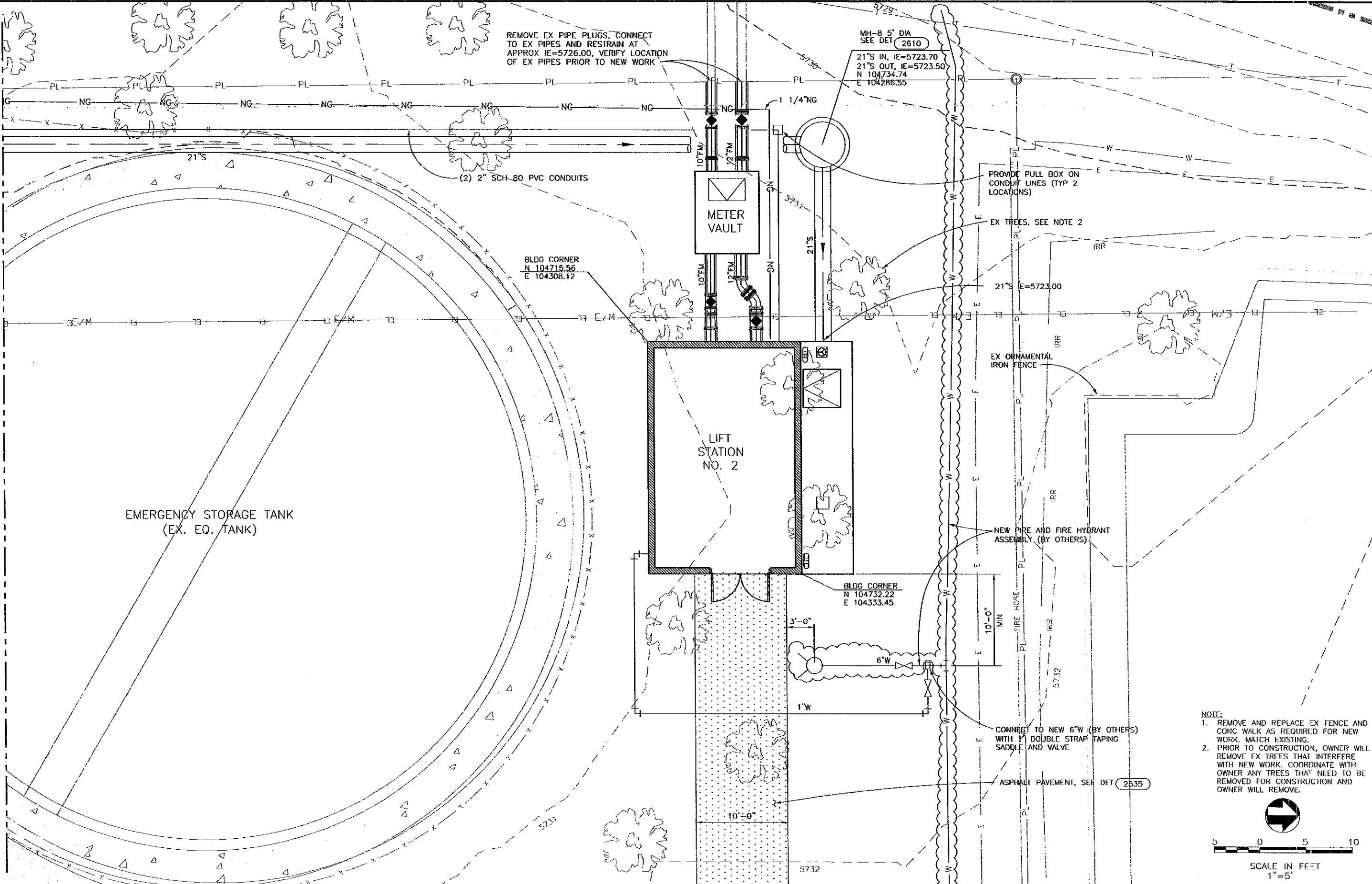
MATCHLINE, SEE SHEET C3

REMOVE EX PIPE PLUGS, CONNECT TO EX PIPES AND RESTRAIN AT APPROX IE=5726.00, VERIFY LOCATION OF EX PIPES PRIOR TO NEW WORK

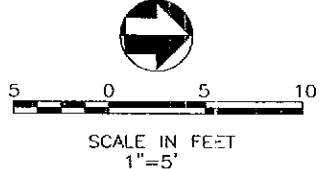
MH-8 5' DIA SEE DET (2610)
21" S IN, IE=5723.70
21" S OUT, IE=5723.50
N 104734.74
E 104286.55

BLDG CORNER
N 104715.56
E 104308.12

BLDG CORNER
N 104732.22
E 104333.45



- NOTE:
1. REMOVE AND REPLACE EX FENCE AND CONC WALK AS REQUIRED FOR NEW WORK. MATCH EXISTING.
 2. PRIOR TO CONSTRUCTION, OWNER WILL REMOVE EX TREES THAT INTERFERE WITH NEW WORK. COORDINATE WITH OWNER ANY TREES THAT NEED TO BE REMOVED FOR CONSTRUCTION AND OWNER WILL REMOVE.



VERIFY SCALES	NO.	DATE	REVISION	BY	CHK.	DESIGNED BY:
BAR IS ONE INCH ON ORIGINAL DRAWING. 0" = 1" IF NOT ONE INCH ON THIS DRAWING, ADJUST SCALES ACCORDINGLY.	0	05/2008	ISSUED FOR BID			RAP
						DRAWN BY: CWC
						CHECKED BY:
						DATE: APRIL 2008

Arber
Water, Wastewater & Storm Engineers

Richard P. Arber Associates
198 Union Boulevard, Suite 200
Lakewood, Colorado 80228
Website: www.arber.com
Phone: 303.831.4760
Fax: 303.831.0290

INVERNESS WATER AND SANITATION DISTRICT INVERNESS LIFT STATION NO. 2

ENLARGED SITE IMPROVEMENTS AND YARD PIPING PLAN

PROJECT NO. INVR18
SHEET NO. **C4**
9 OF 57
DWG. OF

