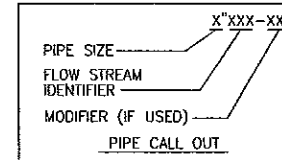


PIPE SCHEDULE

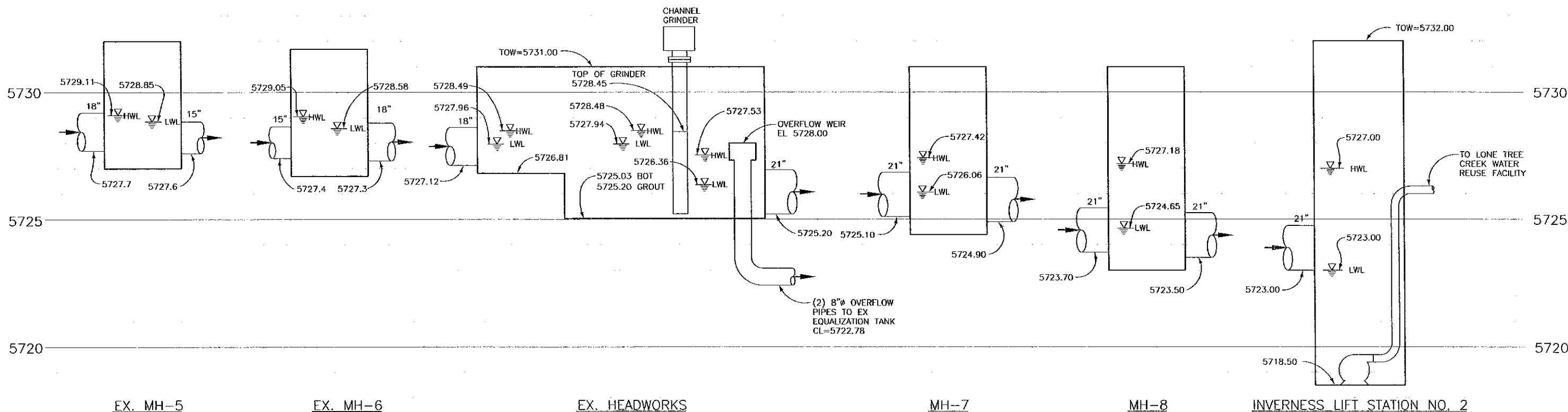
| FLOW STREAM IDENTIFIER | SERVICE | INSTALLATION | PIPE SIZE | PIPE MATERIAL | WALL THICKNESS OR CLASS | INTERIOR LINING | TEST PRES. & TYPE | NOTES |
|------------------------|---------------------|--------------|-----------|--------------------|-------------------------|-----------------|-------------------------|--|
| EXH | GENERATOR EXHAUST | EXPOSED | <3 IN | - | - | - | - | NOT REQUIRED |
| | | BURIED | ≥3 IN | BLACK STEEL | SCH 40 | - | - | |
| FM | FORCE MAIN | EXPOSED | <3 IN | DI | CL55 | EPOXY | 150 PSIG HYDRAULIC | |
| | | BURIED | ≥3 IN | ALL | - | - | - | |
| FOS | FUEL OIL SUPPLY | EXPOSED | <3 IN | COPPER/BLACK STEEL | SCH 40 | - | 75 PSIG COMPRESSED AIR | SEE FUEL OIL DIAGRAM SHEET M4 FOR MATERIAL |
| | | BURIED | ≥3 IN | ALL | - | - | - | |
| FOR | FUEL OIL RETURN | EXPOSED | <3 IN | BLACK STEEL | SCH 40 | - | 75 PSIG COMPRESSED AIR | |
| | | BURIED | ≥3 IN | ALL | - | - | - | |
| FOV | FUEL OIL VENT | EXPOSED | <3 IN | GALV STEEL | SCH 40 | - | 5 PSIG OR 10 FTWC | |
| | | BURIED | ≥3 IN | ALL | - | - | - | |
| NG | NATURAL GAS | EXPOSED | <3 IN | - | - | - | SEE SPECIFICATION 15400 | |
| | | BURIED | ≥3 IN | - | - | - | - | |
| PDR | PROCESS DRAIN | EXPOSED | <3 IN | - | - | - | 20 FEET HYDRAULIC | |
| | | BURIED | ≥3 IN | PVC | CS80, DR25 | - | - | |
| S | SANITARY SEWER | EXPOSED | <3 IN | PVC | SCH 80 | - | 20 FEET HYDRAULIC | |
| | | BURIED | ≥3 IN | - | - | - | - | |
| SPD | SUMP PUMP DISCHARGE | EXPOSED | <3 IN | PVC | PS-46 | - | 100 PSIG HYDRAULIC | |
| | | BURIED | ≥3 IN | - | - | - | - | |
| W | POTABLE WATER | EXPOSED | <3 IN | COP | TYPE L | - | 150 PSIG HYDRAULIC | |
| | | BURIED | ≥3 IN | COP | TYPE K | - | - | |
| | | | ≥3 IN | DI | CL 51 | CEMENT | | |

| PIPE MATERIAL | SPECIFICATION SECTION |
|-------------------|------------------------------------|
| GALV, BLACK STEEL | 15061 - PIPE: STEEL |
| DI | 15062 - PIPE: DUCTILE IRON |
| COP | 15063 - PIPE: COPPER |
| PVC | 15064 - PIPE: PLASTIC PVC PRESSURE |
| PVC - S | 15065 - PIPE: PLASTIC PVC SEWER |



MODIFIERS:
 B/BYPASS
 D/DRAIN
 O/OVERFLOW
 V/VENT (PROCESS)

GENERAL NOTES:
 1. BUILDING DRAINAGE TEST AND INSPECTION SHALL BE BY LOCAL AUTHORITY AND THE APPLICABLE SECTIONS OF THE UNIFORM PLUMBING CODE.
 2. MODIFIERS ARE USED WITH A PRIMARY SERVICE TO DENOTE A SPECIFIC FUNCTION. PIPING IDENTIFIED WITH A MODIFIER SHALL BE THE SAME AS THE PRIMARY SERVICE UNLESS OTHERWISE NOTED.



HYDRAULIC PROFILE

LEGEND

WATER SURFACE ELEVATIONS → XXXX.XX

NOTES:
 1. HYDRAULIC PROFILE IS BASED ON PEAK HOUR FLOW OF 3.2 MGD.
 2. HIGH WATER LEVEL (HWL) VALUE IS BASED ON HIGH WATER LEVEL IN WETWELL AND LOW WATER (LWL) LEVEL VALUE IS BASED ON LOW WATER LEVEL IN WETWELL.

5/9/08 11:43 AM R.P. ARBER ASSOCIATES, INC. 1500 W. 10TH AVENUE, SUITE 200, LAKEWOOD, CO 80228



| | | | | | | | | | |
|---|-------|--------------|-------------------------|----|------|------------------|---------------|-------------|------------------|
| VERIFY SCALES BAR IS ONE INCH ON ORIGINAL DRAWING. 0" = 1" IF NOT ONE INCH ON THIS DRAWING, ADJUST SCALES ACCORDINGLY. | NO. 0 | DATE 05/2008 | REVISION ISSUED FOR BID | BY | CHK. | DESIGNED BY: RAP | DRAWN BY: CWC | CHECKED BY: | DATE: APRIL 2008 |
|---|-------|--------------|-------------------------|----|------|------------------|---------------|-------------|------------------|

Arber
 Water, Wastewater & Reuse Engineers

Richard P. Arber Associates
 198 Union Boulevard, Suite 200
 Lakewood, Colorado 80228
 Website: www.arber.com
 Phone: 303.831.4700
 Fax: 303.831.0290

**INVERNESS WATER AND SANITATION DISTRICT
 INVERNESS LIFT STATION NO. 2**

PIPE SCHEDULE AND HYDRAULIC PROFILE

PROJECT NO. INVR18
 SHEET NO. **G3**
 3 OF 57
 DWG. OF

DESIGN CRITERIA

GRINDERS

| | |
|-----------------|-----------------|
| Number of Units | 2 |
| Capacity | 1,250 gpm |
| Type | Channel mounted |

EMERGENCY RETURN PUMPS (EX. EQ. PUMPS)

| | |
|-----------------|-------------|
| Number of Units | 3 |
| Capacity | 400 gpm |
| Type | Submersible |

EMERGENCY STORAGE TANK (EX. EQ. TANK)

| | |
|--------|-----------------|
| Volume | 556,000 Gallons |
|--------|-----------------|

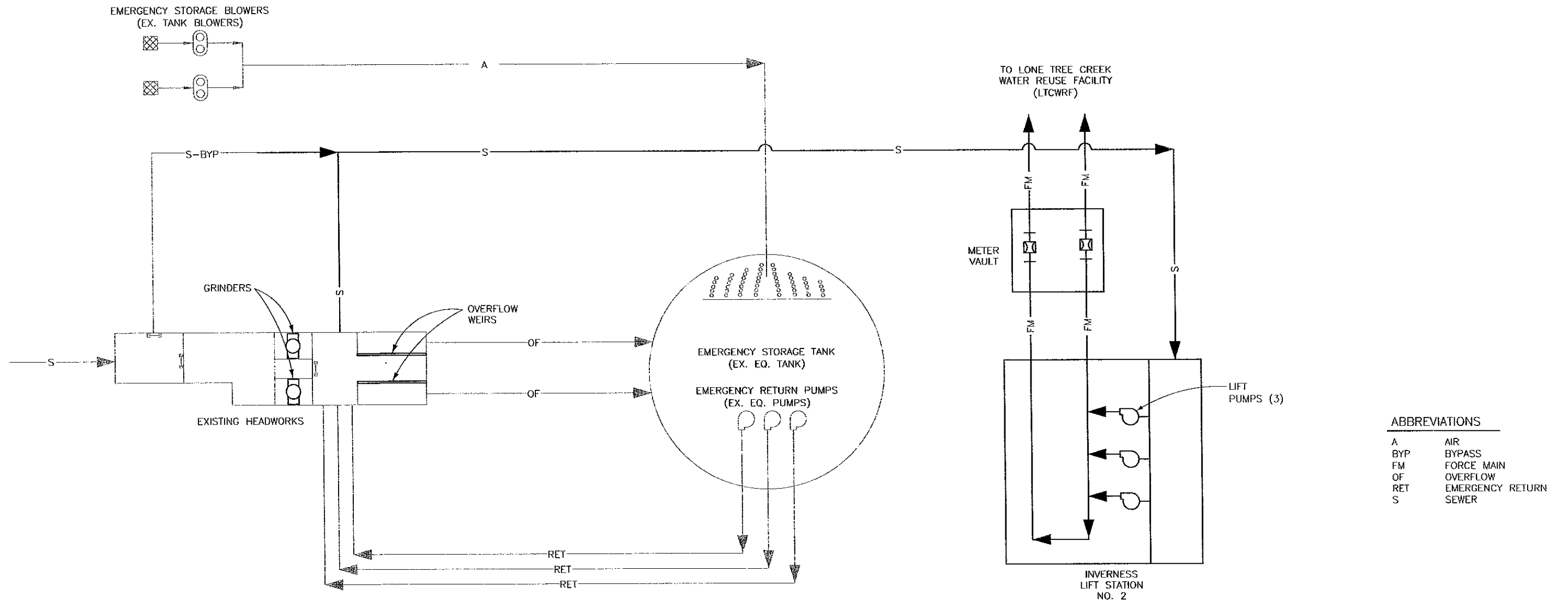
EMERGENCY STORAGE BLOWERS (EX. EQ. TANK BLOWERS)

| | |
|-----------------|-----------------------|
| Number of Units | 2 |
| Capacity | 650 cfm |
| Type | Positive displacement |

LIFT PUMPS

| | |
|-----------------|---|
| Number of Units | 3 (2 Duty, 1 Standby) |
| Capacity | 1,120 gpm |
| Type | Vertical, Non-clog Centrifugal variable speed |

PROCESS FLOW DIAGRAM



ABBREVIATIONS

| | |
|-----|------------------|
| A | AIR |
| BYP | BYPASS |
| FM | FORCE MAIN |
| OF | OVERFLOW |
| RET | EMERGENCY RETURN |
| S | SEWER |

5/16/08 13:18 CURT R17 P:\INVERNESS\INVR18\DESIGN\GENERAL\GA-DESIGN\AND PFD\DWG\REFS: P:\INVERNESS\INVR18\DESIGN\BASES\X-TITLE.DWG



| | | | | | | | |
|--|-----|---------|----------------|----|------|--------------|------------|
| VERIFY SCALES BAR IS ONE INCH ON ORIGINAL DRAWING. 0" = 1" IF NOT ONE INCH ON THIS DRAWING, ADJUST SCALES ACCORDINGLY. | NO. | DATE | REVISION | BY | CHK. | DESIGNED BY: | RAF |
| | 0 | 05/2008 | ISSUED FOR BID | | | DRAWN BY: | CWC |
| | | | | | | CHECKED BY: | |
| | | | | | | DATE: | APRIL 2008 |

Arber
 Water, Wastewater & Reuse Engineers
 Richard P. Arber Associates
 198 Union Boulevard, Suite 200
 Lakewood, Colorado 80228
 Website: www.arber.com
 Phone: 303.631.4700
 Fax: 303.631.0290

**INVERNESS WATER AND SANITATION DISTRICT
 INVERNESS LIFT STATION NO. 2**

**DESIGN CRITERIA AND
 PROCESS FLOW DIAGRAM**

| | |
|-------------|-----------|
| PROJECT NO. | INVR18 |
| SHEET NO. | G4 |
| 4 OF 57 | |

