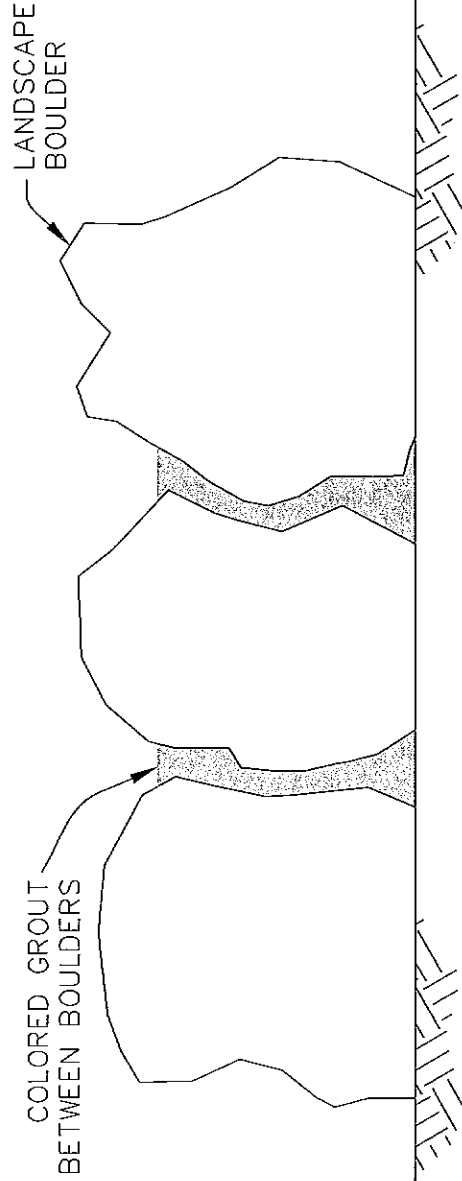


PLAN  
GROUTED BOULDERS



SECTION



CITY OF THORNTON  
LAMBERTSON LAKES  
PROJECT  
ADDENDUM NO. 2

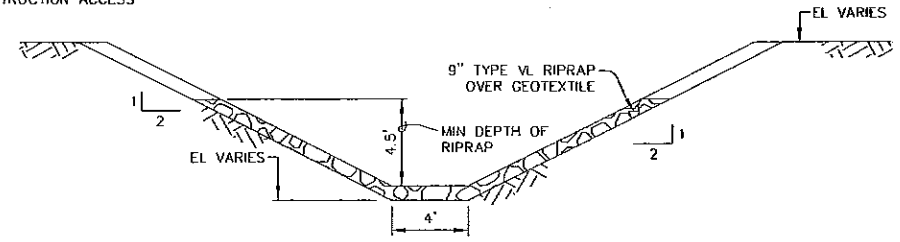
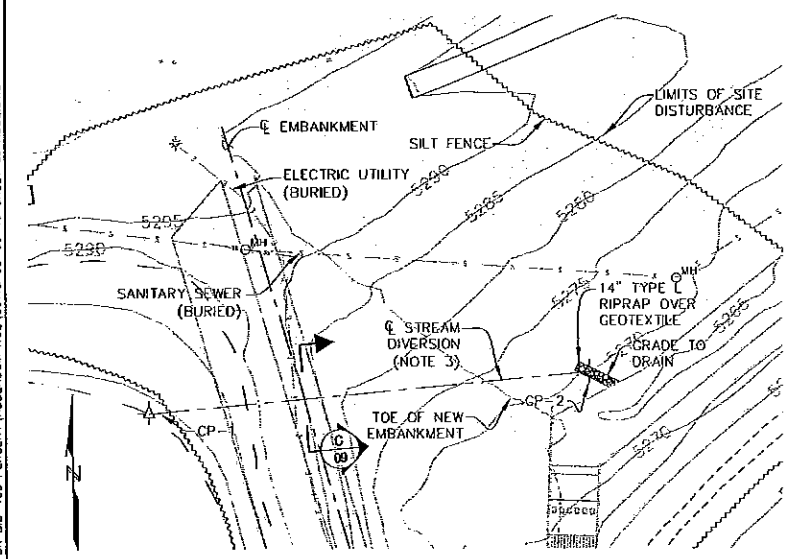
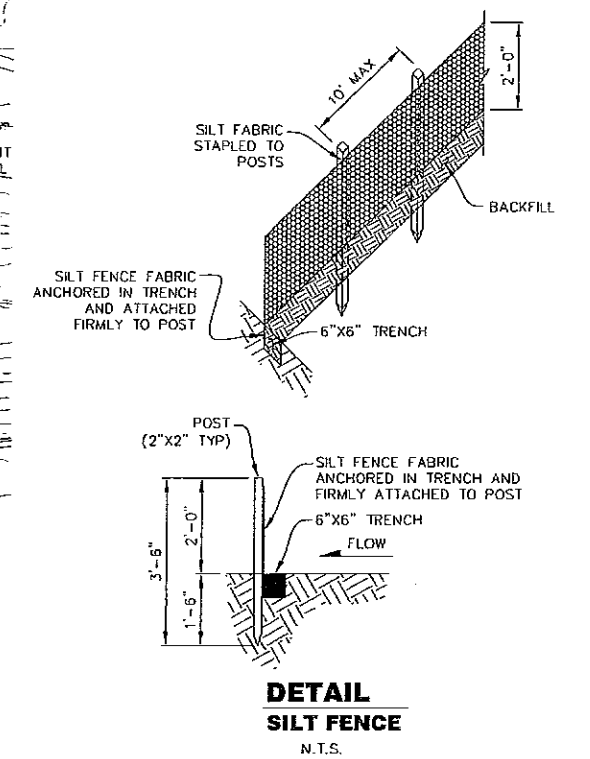
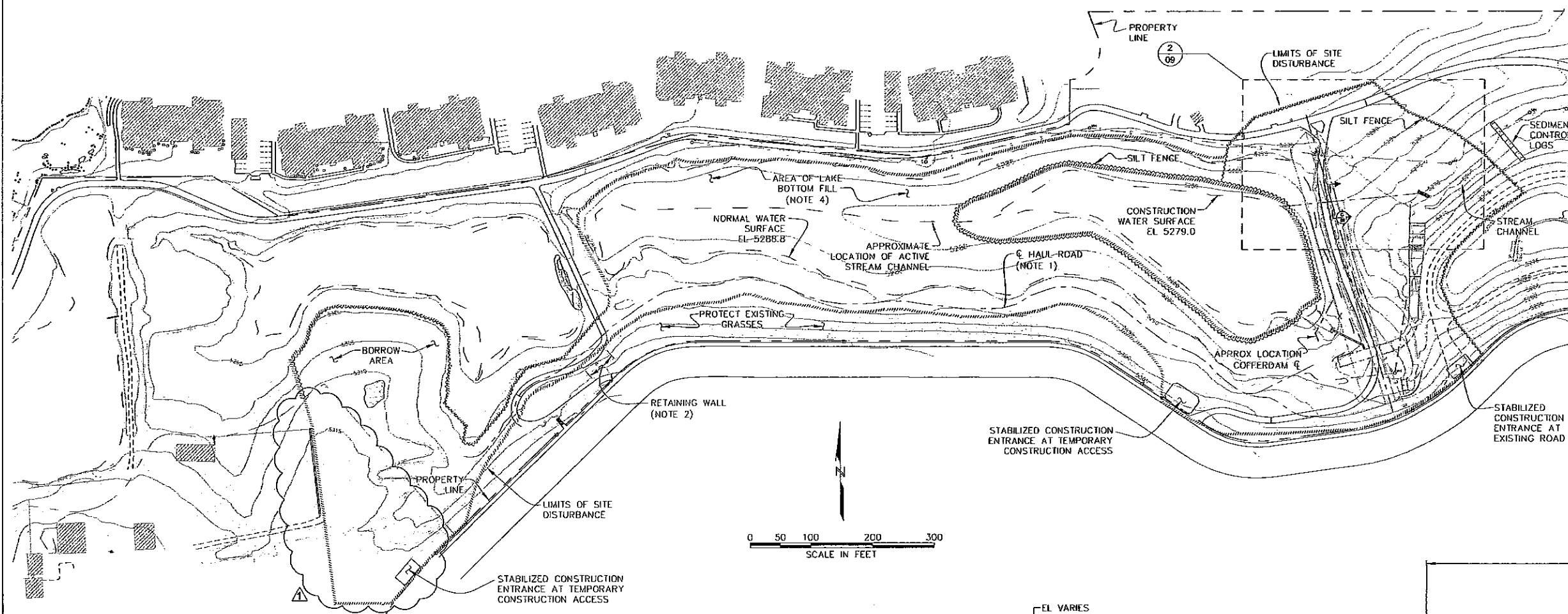
GROUTED BOULDER DETAIL

PROJECT NO. 06113

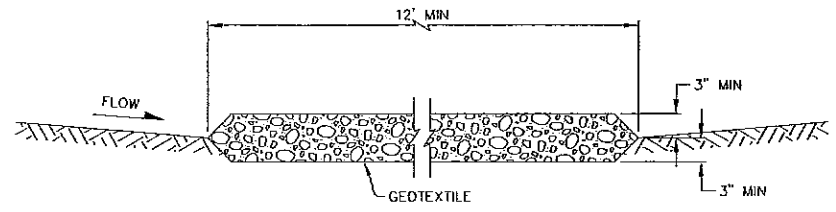
September 2008

Figure 1

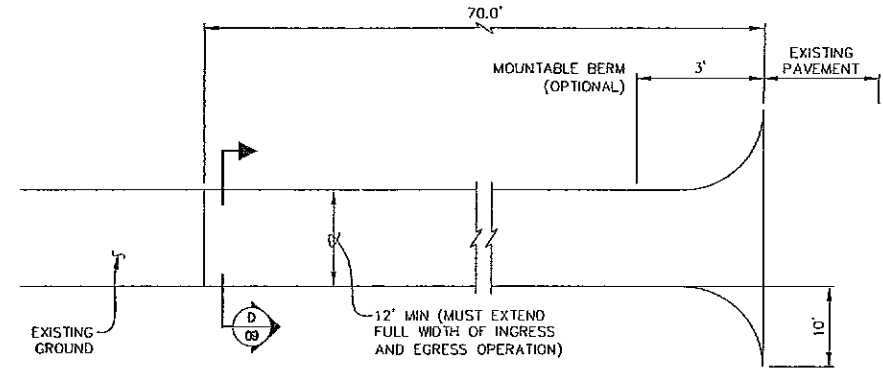
P:\06113 - LAMBERTSON LAKES\ADDENDUM NO.2\06113 08-09-18 SHEET 09 ADDEND.DWG



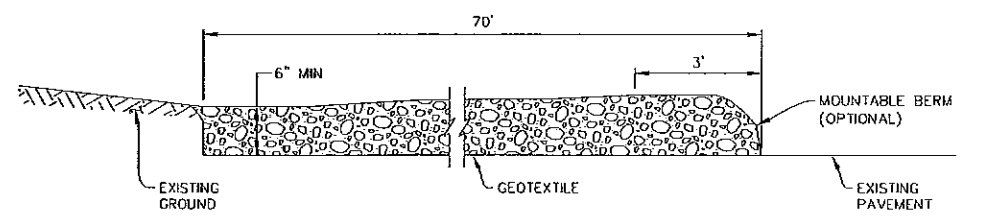
**SECTION C**  
**STREAM DIVERSION 09**  
SCALE IN FEET



**SECTION D**  
**STABILIZED CONSTRUCTION ENTRANCE 09**  
SCALE IN FEET



**PLAN**  
**STABILIZED CONSTRUCTION ENTRANCE**  
N.T.S.



**SIDE ELEVATION**  
N.T.S.

- NOTES:
- CENTERLINE OF GRAVEL ROAD TO ALIGN WITH CENTERLINE OF TRAIL AS SHOWN ON DRAWING 08.
  - PRESERVE RETAINING WALL. IF DAMAGED, REPLACE WITH MSE WALL.
  - CONSTANT SLOPE OF APPROX 4.0% BETWEEN CP1 AND CP2 WITH A MIN CHANNEL DEPTH OF 4.5 FEET. COORDINATE EXCAVATION WITH SPILLWAY EXCAVATION. LIMITED PIPE SECTIONS MAY BE NEEDED.
  - EXTENT OF LAKE BOTTOM FILL TBD BY ENGINEER.

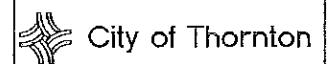
**DETAIL**  
**STREAM DIVERSION**

**2**  
**09**  
SCALE IN FEET

CP ID	NORTHING	EASTING	ELEVATION
CP-1	746422.447	149598.739	5279.0
CP-2	746443.915	149828.729	5270.0

THIS DOCUMENT, AND THE IDEAS AND DESIGNS INCORPORATED HEREIN, AS AN INSTRUMENT OF PROFESSIONAL SERVICE, IS THE PROPERTY OF R.J.H. CONSULTANTS, INC. AND THE CITY OF THORNTON AND IS NOT TO BE USED, IN WHOLE OR IN PART, FOR ANY OTHER PROJECT WITHOUT THE WRITTEN AUTHORIZATION OF R.J.H. CONSULTANTS, INC. AND THE CITY OF THORNTON

NO.	DATE	ISSUE/REVISION	DES	DRN	CHK	APP
9/08		ADDENDUM NO. 2	ATM	RJA	ATM	RJH
7/08		ISSUED FOR BID	TEO	TEO	ATM	RJH



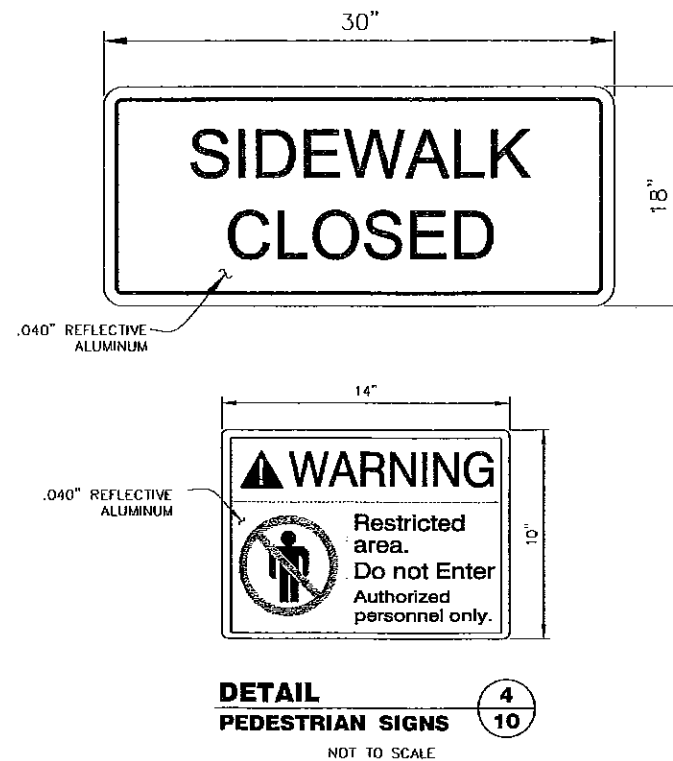
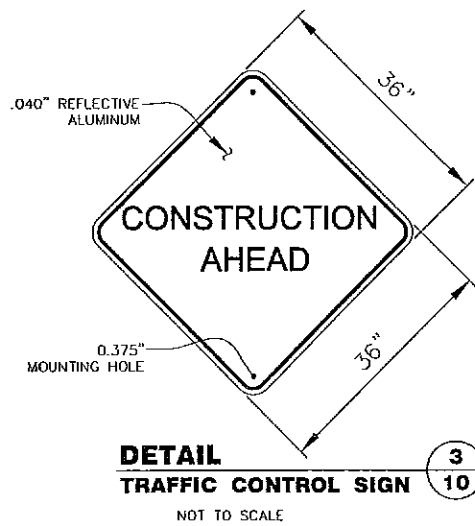
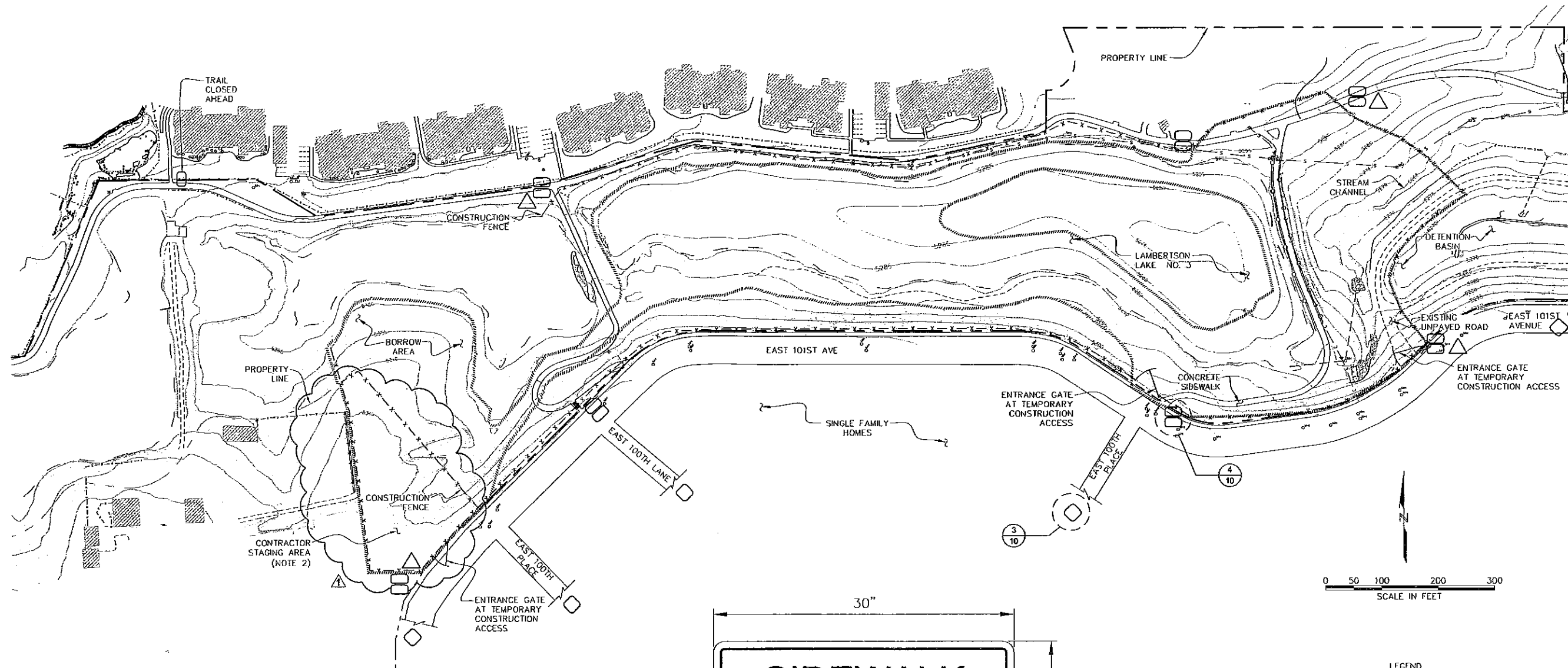
LAMBERTSON LAKES NO. 3  
DAM REHABILITATION  
PROJECT

STREAM DIVERSION AND  
EROSION CONTROL PLAN

RJH PROJECT 06113

C-1935

DWG. NO.  
**09**  
SHEET NO.  
9 of 31



- LEGEND**
- PEDESTRIAN SIGNS: [Symbol]
  - TRAFFIC CONTROL SIGN: [Symbol]
  - PROJECT SIGN (OWNER FURNISHED): [Symbol]

- NOTES:**
- "SIDEWALK CLOSED AHEAD" SIGN TO BE LOCATED AT TRAIL AND WASHINGTON STREET.
  - FENCE AND PROTECT TREES AND OLD FARM EQUIPMENT IN CONTRACTOR STAGING AREA (DWG 11).

C-1935

THIS DOCUMENT, AND THE IDEAS AND DESIGNS INCORPORATED HEREIN, AS AN INSTRUMENT OF PROFESSIONAL SERVICE, IS THE PROPERTY OF RJH CONSULTANTS, INC. AND THE CITY OF THORNTON AND IS NOT TO BE USED, IN WHOLE OR IN PART, FOR ANY OTHER PROJECT WITHOUT THE WRITTEN AUTHORIZATION OF RJH CONSULTANTS, INC. AND THE CITY OF THORNTON

NO.	DATE	ISSUE/REVISION	DES	DRN	CHK	APP
9/08		ADDENDUM NO. 2	ATM	RJA	ATM	RJH
7/08		ISSUED FOR BID	TEO	TEO	ATM	RJH

City of Thornton



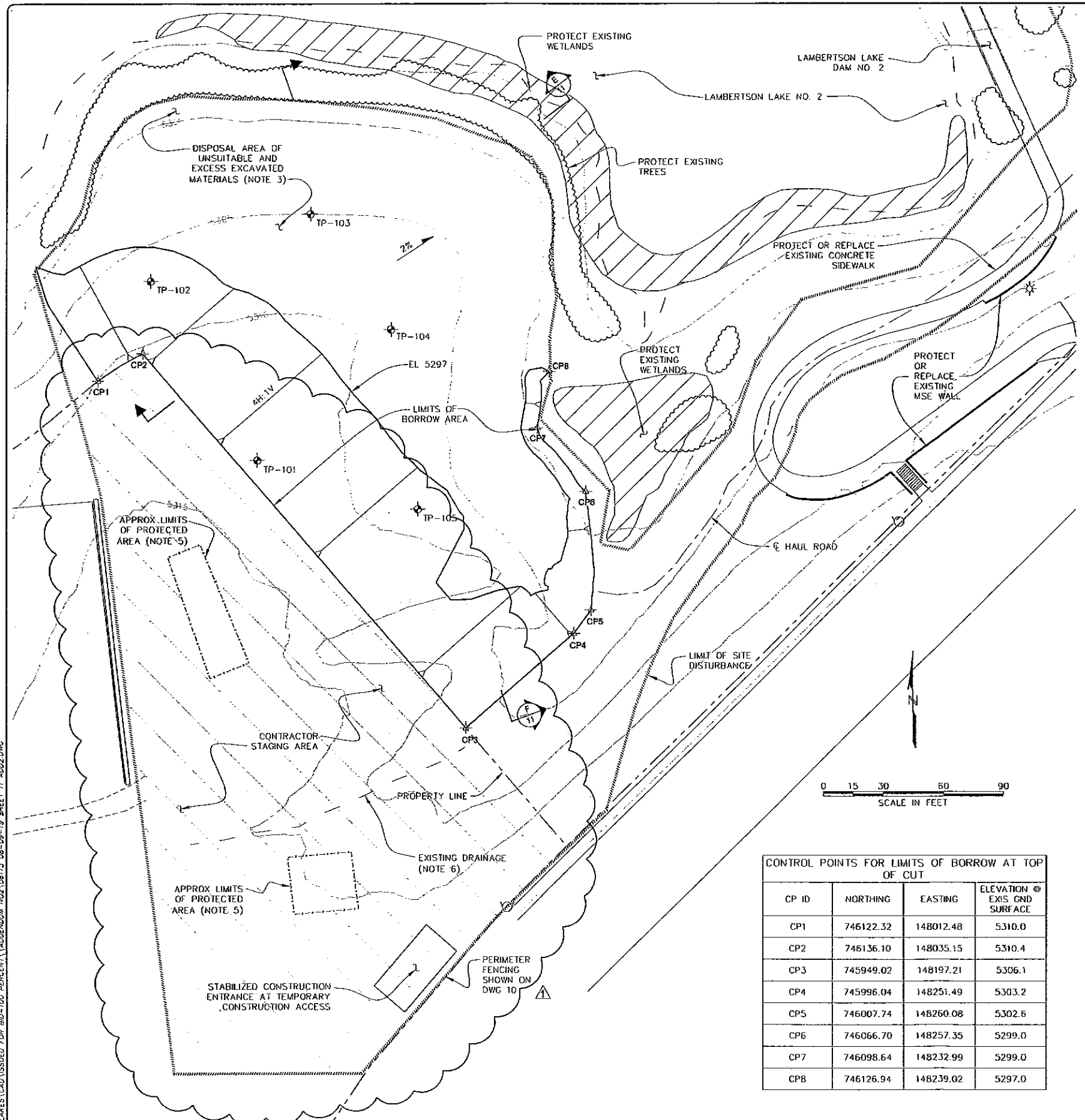
LAMBERTSON LAKES NO. 3  
DAM REHABILITATION  
PROJECT

RJH PROJECT 06113

TRAFFIC AND  
PEDESTRIAN PLAN

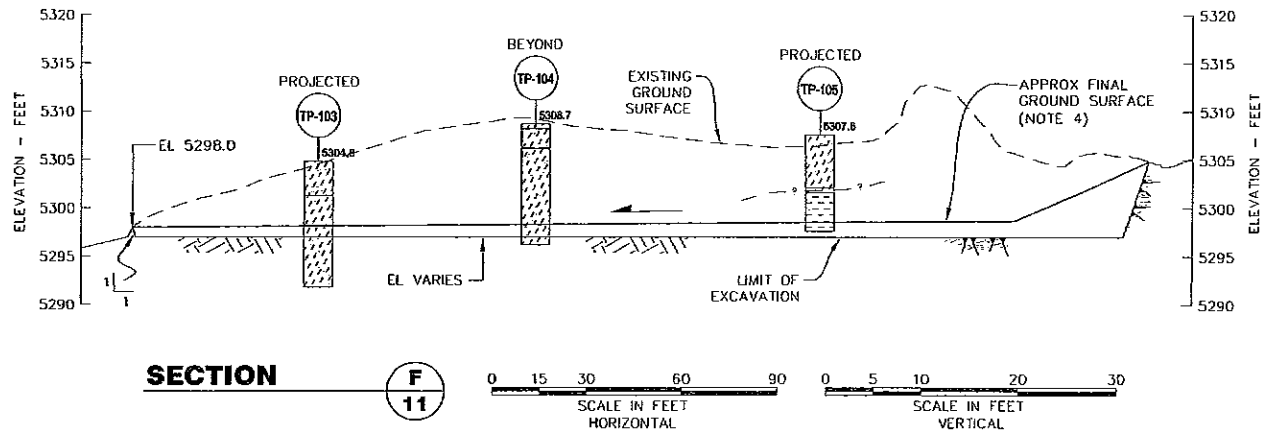
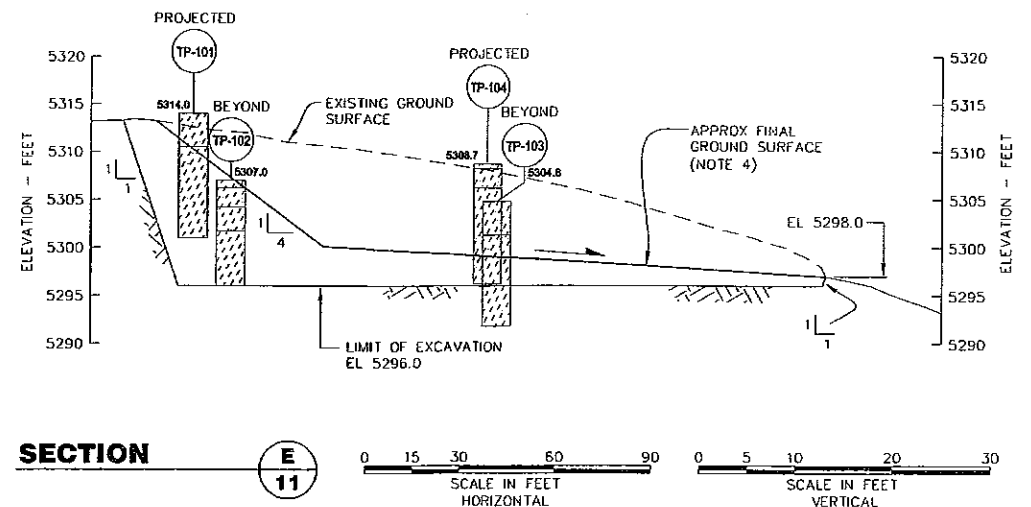
DWG. NO.  
**10**  
SHEET NO.  
10 of 31

P:\06113 - LAMBERTSON LAKES\CAD\ISSUED FOR BID\100 PERCENT\ADDENDUM NO.2\06113\_08-09-19\_SHEET 11.dwg



**CONTROL POINTS FOR LIMITS OF BORROW AT TOP OF CUT**

CP ID	NORTHING	EASTING	ELEVATION @ EXIS GND SURFACE
CP1	746122.32	148012.48	5310.0
CP2	746136.10	148035.15	5310.4
CP3	745949.02	148197.21	5306.1
CP4	745996.04	148251.49	5303.2
CP5	746007.74	148260.08	5302.6
CP6	746066.70	148257.35	5299.0
CP7	746098.64	148232.99	5299.0
CP8	746126.94	148239.02	5297.0

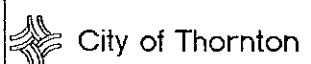


- LEGEND**
- ALLUVIUM/RESIDUUM: GENERALLY SANDY CLAY, CLAYEY SAND, OR LEAN CLAY.
  - BEDROCK: SANDSTONE OF THE DENVER FORMATION.
  - FILL: GENERALLY SANDY CLAY OR CLAYEY SAND

- NOTES:**
- FILL, ALLUVIUM/RESIDUUM, AND BEDROCK DEPTHS ARE KNOWN ONLY AT THE LOCATION OF EACH BOREHOLE.
  - MATERIAL DESCRIPTIONS AND DEPTHS OF THE VARIOUS MATERIALS ARE APPROXIMATE. ADDITIONAL INFORMATION IS PRESENTED ON BORING AND TEST PIT LOGS CONTAINED IN THE GEOTECHNICAL DATA REPORT (R.J.H, 2007).
  - MAINTAIN DISPOSAL PILES OF UNSUITABLE AND EXCESS MATERIALS WITHIN THE BORROW AREA LIMITS SHOWN. GRADE FINAL DISPOSAL PILES AT THE GRADES SHOWN.
  - SLOPE FINAL GRADE TO DRAIN AND APPEAR "NATURAL".
  - FENCE AND PROTECT OLD FARM EQUIPMENT AND VEGETATION. EXACT LIMITS TO BE DETERMINED BY ENGINEER IN THE FIELD.
  - MAINTAIN EXISTING DRAINAGE. TEMPORARY CULVERT MAY BE NEEDED.

THIS DOCUMENT, AND THE IDEAS AND DESIGNS INCORPORATED HEREIN, AS AN INSTRUMENT OF PROFESSIONAL SERVICE, IS THE PROPERTY OF R.J.H CONSULTANTS, INC. AND THE CITY OF THORNTON AND IS NOT TO BE USED, IN WHOLE OR IN PART, FOR ANY OTHER PROJECT WITHOUT THE WRITTEN AUTHORIZATION OF R.J.H CONSULTANTS, INC. AND THE CITY OF THORNTON

NO.	DATE	ISSUE/REVISION	DES	DRN	CHK	APP
9/08		ADDENDUM NO. 2				
7/08		ISSUED FOR BID				



LAMBERTSON LAKES NO. 3 DAM REHABILITATION PROJECT

BORROW AREA PLAN AND SECTIONS

C-1935

DWG. NO. 11  
SHEET NO. 11 of 31

RJH PROJECT 06113